

TODAY'S RADIO BROADCASTS

[Central Daylight Saving Time.]

ON SHORT WAVES.

NEWS IN ENGLISH.

11 a. m. — London — 17.81 mg., 18.84 m.
1 p. m. — London — 11.79 mg., 12.53 m.; 17.79 mg., 18.80 m.
4:30 — London — 15.31 mg., 16.6 m.; 11.75 mg., 25.5 m.
6 — Berlin — 11.77 mg., 25.4 m.; 15.20 mg., 19.7 m.
6:55 — Prague — 15.23 mg., 19.7 m.
7 — Moscow — 15.41 mg.
7 — Budapest — 9.13 mg., 32.8 m.
7:30 — London — 11.75 mg., 25.5 m.
7:30 — Rome — 15.30 mg., 19.6 m.; 11.81 mg., 25.4 m.; 9.63 mg., 31.1 m.
8:15 — Berlin — 11.77 mg., 25.4 m.; 15.20 mg., 19.7 m.
8:55 — Moscow — 15.41 mg.
10 — Paris — 11.88 mg., 25.2 m.; 11.71 mg., 25.6 m.
10:30 — Berlin — 11.77 mg., 25.4 m.; 15.20 mg., 19.7 m.
11 — London — 11.75 mg., 25.5 m.; 9.61 mg., 31.5 m. [Mg. is for megacycles; m. for meters.]

Shortwave broadcasting is confined mainly to narrow bands located approximately at 16, 19, 26, 31, and 49 meters. At this season of the year listeners usually find the 16 meter band best for European transmissions in the morning hours; the 19 meter from noon to early evening, and the 25, 31, and 49 later.

CHICAGO FREQUENCIES.

W-G-N—720. WCFL—970.
WIND—560. WMBI—1080.
WMAQ—670. WJJD—1200.
WBBM—770. WVAE—1200.
WLS—870. WBSB—1210.
WENR—870. WGES—1360.
WAAF—920. WHIP—1480.

*Indicates MBS program.]

7:00 A. M.
W-G-N—Good Morning prog.
WMAQ—Suburban hour.
WAAF—Breakfast Express.
WMAQ—Rise and Shine.
7:15 A. M.
WLS—Variety Talent.
WBBM—Olson Oddities.
7:30 A. M.
WBBM—Musical Clock.
WLS—Musical Program.
7:45 A. M.
W-G-N—Music Parade.
WLS—Morning Devotions.
8:00 A. M.
W-G-N—Your Morning News.
WCFL—Breakfast club.
WLS—Hoosier Sodbusters.
WIND—European News.
WMAQ—Your Neighbor.
8:15 A. M.
W-G-N—Good Morning prog.
WIND—Fiddler's Fancy.
WHIP—Musical Clock.
8:30 A. M.
W-G-N—Doorway to Music.
WMAQ—Office Time.
WBBM—Words and Music.
WIND—Passing Show.
WLS—Pat Buttram.
8:45 A. M.
W-G-N—What's News in the Stores Today.
WMAQ—A Step Ahead.
WJJD—Hedegard's orch.
9:00 A. M.
W-G-N—Morning Melodies.
WIND—Organ Moods.
WLS—Peterson, organist.
WAAF—Canary Serenade.
WMAQ—Morin Sisters.
9:15 A. M.
W-G-N—Alice Blue, pianist.
WCFL—No School Today.
WMAQ—Morning Jubilee.
9:30 A. M.
W-G-N—Morning Serenade.
WLS—Editor's Haymow.
WBBM—Saturday Serenade.
WCFL—Barry McKinley.
WMAQ—Bright Idea Club.
9:45 A. M.
W-G-N—Musical Mail Box.
WCFL—Bittersweet Melodies.
WBBM—Aeolian Ensemble.
WLS—Spelling Bee.
10:00 A. M.
W-G-N—Keep Fit to Music.
WMAQ—Ross Trio.
WIND—String Quartet.
WBBM—Saturday Sunshine.

10:15 A. M.
W-G-N—June Baker, home management.
WMAQ—Smiling Ed McConnell.
WJJD—Whistle at Work.
WAAF—Orchids and Moonlight.

10:30 A. M.
*W-G-N—U. S. Army band.
WIND—Concert Hall.
WJJD—Council for Youth.
WMAQ—Hilda Hope.
WAAF—Let's Dance.
WCFL—Program for Youths.
WLS—Piano Recital.

10:57 P. M.
W-G-N—A. P. News Summary.

11:00 A. M.
*W-G-N—Alice Blue, pianist.
WMAQ—Martin's orchestra.
WCFL—Manhattan Melodies.
WIND—Bob Ather.
WJJD—Dance Rhythm.
WLS—Helen Joyce.
WBBM—Julia Blake.

11:15 A. M.
W-G-N—Melody Time.
WBBM—Gene Baker.

11:30 A. M.
W-G-N—Quin Ryan's News Commentary.

WJJD—Variations.

WMAQ—Park District.

WMAQ—Farm and Home.

WBBM—Skull Practice.

11:45 A. M.
*W-G-N—Gloomchasers.

WCFL—Willie Winn.

WJJD—Debate Forum.

WBBM—Novachord Novel.

WLS—Across the Mike.

NOON.

WAAF—Symphony hour.

WBBM—Park District.

WLS—Melody Parade.

12:15 P. M.
W-G-N—Walter Flandorf, organist.

WBBM—Health Signals.

12:30 P. M.
W-G-N—Markets.

WBBM—What Price America?

WMAQ—Matinee in Rhythm.

WLS—Jed Market.

WCFL—Little Variety Show.

12:35 P. M.
*W-G-N—The Manhattans.

WMAQ—Words and Music.

12:45 P. M.
WMAQ—Doggy Dan.

WLS—Grain market.

WJJD—Twelve-thirty Party.

1:00 P. M.
*W-G-N—Ginsburgh's Concert orchestra.

WMAQ—Kinney's orch.

WIND—Italian hour.

WBBM—News for Missus.

WLS—Chuck Acece.

1:05 P. M.
WAAF—Foreign Relations council.

1:15 P. M.
WJJD—Week's orch.

WBBM—Dugout Dogs.

1:30 P. M.
W-G-N—Sax vs. St. Louis.

WMAQ—WBBM, WCFL, WJJD.

WIND—Civic Theater.

WMAQ—String Ensemble.

1:45 P. M.
WLS—Poultry Service.

2:00 P. M.
WLS—Merry-Go-Round.

WMAQ—Gray's orch.

WAAF—Drama.

WHIP—Englewood hour.

2:15 P. M.
WIND—Race Results.

WMAQ—James' orch.

2:30 P. M.
WMAQ—Mythical Ballroom.

WHIP—Social Justice.

WENR—Club Matinee.

WMAQ—Tryton's Band.

3:30 P. M.
W-G-N—Swing It.

*WMAQ—Laval's orch.

3:40 P. M.
W-G-N—The Leadoff Man.

4:00 P. M.
WENR—Child's orch.

WAAF—Opera hour.

WIND—Sports Results.

4:15 P. M.
WMAQ—Cameos of Melody.

WIND—Race Results.

4:30 P. M.
WENR—Hawkins' orch.

WHIP—Hollywood Today.

WHIP—Kay Kyser.

4:45 P. M.
WBBM—Tenth Inning.

5:00 P. M.
WENR—El Chico.

WBBM—Bull Session.

WMAQ—Prof. Kallenmeyer.

WIND—Sports Results.

5:30 P. M.
WCFL—Keeping Posted.
WBBM—European War News.
WMAQ—Art of Living.
WENR—Renfrew of the Mounted.

5:45 P. M.
*W-G-N—Gene Erwin's orch.
WMAQ—Norsemen Quartet.
WCFL—Hit Revue.

6:00 P. M.
*W-G-N—Ginsburgh's Concert orchestra.

WBBM—Sports review.
WENR—Message of Israel.

WIND—German hour.

WMAQ—Bolognini's orch.

WJJD—Baseball Scoreboard.

6:15 P. M.
*W-G-N—Bob Elson's sports review.

WMAQ—Organ Moods.

WCFL—Dad's Family.

6:30 P. M.
*W-G-N—Captain Herne.

WMAQ—Question Box.

WBBM—Americans at Work.

WAAF—Bandstand.

WLS—Variety.

6:45 P. M.
*W-G-N—Inside of Sports.

WJJD—Supperette Frolic.

WHIP—Faging the Preps.

7:00 P. M.
W-G-N—Heldberg Concert orch.

WMAQ—Dick Tracy.

WBBM—Stephen F. Chadwick.

WIND—Cubs vs. St. Louis.

7:15 P. M.
WBBM—Stelling's orch.

WLS—Sports Review.

7:30 P. M.
W-G-N—Roundtable discussion of the Legion.

WMAQ—Red Skelton.

WLS—Barn Dance.

WBBM—Orrin Tucker.

7:45 P. M.
*W-G-N—Havard Calls.

WBBM—Man on the Street.

8:00 P. M.
W-G-N—Reichman's orch.

WBBM—Hit Parade.

WLS—Barn Dance.

WMAQ—Vox Pop.

WIND—Tom Ott, organist.

WCFL—Concert program.

8:30 P. M.
W-G-N—Tomorrow's Tribune.

WMAQ—Oboler's Plays.

WIND—Paige's orch.

8:37 P. M.
W-G-N—U. P. News.

8:45 P. M.
W-G-N—Carlson's orch.

WBBM—Saturday Serenade.

9:00 P. M.
W-G-N—America Looks Ahead.

WMAQ—Benny Goodman.

WLS—Barnyard Jamboree.

9:15 P. M.
*W-G-N—Mushin' on the Air.

WBBM—Man About Hollywood.

9:30 P. M.
W-G-N—Leonard's orch.

WMAQ—Bolognini's orch.

WLS—Front Porch Party.

9:45 P. M.
WMAQ—Herth's orchestra.

WBBM—Preview of American Legion convention.

10:00 P. M.
*W-G-N—J. Davis' orch.

WLS—Barn Dance.

WBBM—Shep Fields' orch.

WMAQ—Osborne's orch.

WIND—Walkathon.

10:15 P. M.
*W-G-N—Carlson's orch.

WMAQ—Levant's orch.

10:30 P. M.
W-G-N—Jurgens' orch.

WBBM—Chester's orch.

WMAQ—Abe Lyman's orch.

WCFL—Life program.

11:00 P. M.
*W-G-N—Shep Fields' orch.

WLS—Barn Dance.

WMAQ—James' orch.

WBBM—Hal Kemp's orch.

11:30 P. M.
*W-G-N—Heldberg's orch.

WMAQ—Bolognini's orch.

WLS—Osborne's orch.

WBBM—Jenny's orch.

12:00 P. M.
*W-G-N—Hal Grayson's orch.

WBBM—Ben Bernie's orch.

WIND—Nite Watch.

WENR—Horth's orchestra.

WMAQ—Brigade's orch.

12:30 P. M.
*W-G-N—Coleman's orch.

WENR—James' orch.

WMAQ—Louis Primes' orch.

WBBM—McCune's orch.

1:00 A. M.
*W-G-N—John Davis' orch.

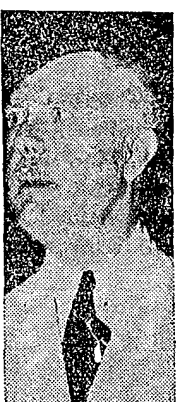
1:30 A. M.
W-G-N—Steve Leonard's orch.

Today's Features

ON W-G-N.

[Central Daylight Saving Time.]

A round table discussion with John Thomas Taylor, national legislative director of the American Legion, and Phil Collins, head of the Convention corporation, of plans for the convention and operations of the Legion, will be heard on W-G-N and the Mutual network from 7:30 to 7:45 tonight.



John T. Taylor.

The twin bill ball game between the White Sox and St. Louis Browns will be described by Bob Elson beginning at 1:30 p. m. The Swing It program, with Bill Anson, will follow the first game and the Lead Off Man will go on the air immediately preceding the second game.

The Inside of Sports, with Commentator Sam Balter, will be offered at 6:45 p. m. The story of Hap Hogan, one of the diamond's most eccentric characters, will be tonight's topic of Once in a Lifetime series.

The W-G-N and Mutual Dance Parade, presented this evening by the orchestras of Steve Leonard, Johnnie Davis, Bill Carlson, Dick Jurgens, Shep Fields, Joe Reichman, Hal Grayson, and Emil Coleman, will be heard from 9:30 p. m. until closing.

Other programs:

7:45 a. m.—The Music Parade.
10:15—June Baker, home management.
11:30—Quin Ryan's News Commentary.
6:30 p. m.—Capt. Herne, news [MBS].
7—Heldberg Concert orchestra.
9—America Looks Ahead.

On Other Stations.

1:05 p. m.—WAAF—Foreign Relations council, Dr. Harry D. Gideonse and Prof. Edwin M. Borchard to debate "Neutrality?"
6:30 —WBBM—Peoples Platform, with Lyman Bryson, Prof. Paul Douglas, and others on "Profiteering and the War."
7—WMAQ—Dick Tracy.
7:30—WMAQ—Red Skelton, Dick Todd, Curt Massey, Edna Stilwell, and others.
8—WBBM—Your Hit Parade, with Lanny Ross and Merry Macs.
8—WMAQ—Vox Pop.
8 to 11 p. m.—WLS—National Barn Dance, with Alec Templeton guest, performing before American Legion audience.
8:30—WMAQ—Arch Oboler's Plays, "Mr. Whiskers," with Morris Carnovsky.
8:45—WBBM—Saturday Night Serenade.
9—WMAQ—Benny Goodman's band.