

Tonight's Aces

New Program

8:30 p. m. — **The Doctor Fights** (WBBM): Raymond Massey stars in series of dramas based on lives of noted men of medicine; Dr. James E. Paullin, president of American Medical Assn., guest speaker.

Discussion

8 p. m. — **Rep. Everett M. Dirksen** (WMAQ): topic, "A Year of Decision."

9:30 p. m. — **Congress Speaks** (WBBM): Sen. Tom Connelly (D.-Tex.) chairman of senate foreign relations committee, "The American Plan for Peace."

Miscellaneous

8:55 p. m. — **Story teller** (WENR): "A Gift from a Stranger," episode in the life of Emperor Franz Joseph of Austria.

Variety

8:30 p. m. — **Ronald Colman Show** (WIBA): variety program, "Durante Takes Over," with Jimmy Durante and Jose Iturbi, pianist, guests.

7:30 p. m. — **Judy Canova** (WBBM): and her hotel gang go on a picnic . . . **Duffy's** (WLS): Sherlock Holmes (Basil Rathbone) is called in to solve the mystery of the thumb prints in the stew.

8 p. m. — **Burns and Allen** (WBBM): telegram for Dinah Shore is misdirected to George, so Gracie starts a campaign to launch him on singing career.

Drama

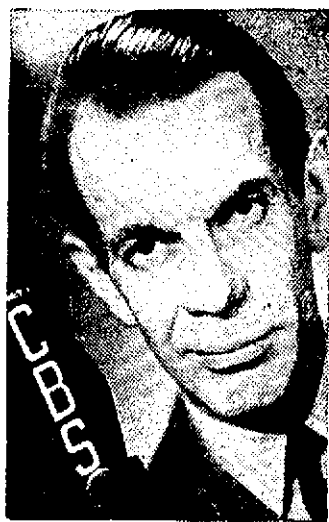
7 p. m. — **Big Town** (WBBM): "Death in a Cage," murder in the circus arena.

9 p. m. — **Columbia Presents Corwin** (WBBM): first of literary trilogy, "Sandburg," with Charles Laughton in leading role.

9:30 p. m. — **Crime Files of Flammond** (WGN): "The Case of the Accurate Eye."

Music

6:30 p. m. — **American Melody Hour** (WBBM): "Long Ago and Far Away," "I'll Get By," "Good-night, Wherever You Are," "Oh



RAYMOND MASSEY
WBBM at 8:30

Love That Will Not Let Me Go."

8:30 p. m. — **Spotlight Bands** (WENR): Frankie Masters.

11:30 p. m. — **Roy Shield Orchestra** (WIBA): "Strike Up the Band," "You're the Dream," "I Love You," "My Ideal."

Wednesdaytime

10:45 a. m. — **Baby Institute** (WCFL): Speaker, Dr. Harry Bakwin, associate professor of pediatrics, New York University college of medicine.

11 a. m. — **Short Story Time** (WHA): Prof. Ronald E. Mitchell, director of University theater, reading 19th century horror story by Wilkie Collins, "A Terribly Strange Bed."

3 p. m. — **Broadway Matinee** (WBBM): Ronald Graham and Patsy Garrett, with Allen Roth orchestra and chorus.

4 p. m. — **Ernst Friedlander** (WHA): cellist of Pro Arte quartet, playing "Air" by Bach, "Sonata in D Major" by Locatelli, and "Nocturne" by Chopin.

4:30 p. m. — **The Farmer Over the Hill** (WHA): one of series depicting struggle of Belgium under Hitler yoke.

5:15 p. m. — **Lyn Murray Orchestra** (WBBM): with William Hargrave, baritone; "Y a n k e e Doodle Boy," "Without a Song," "Speak Low," "I Pledge Allegiance."

OTHER STATIONS WEDNESDAY

MORNING

7:45 Dr. Preston Bradley—WLS