

Listeners' Choice

SPECIAL EVENTS.

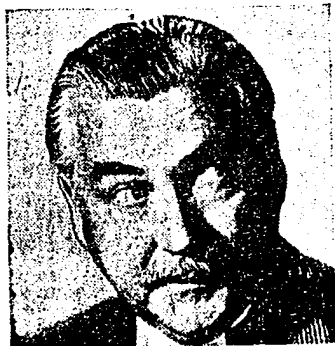
3:00 p. m.—W-G-N, WJJD, WCFL—Cubs open a series with Pittsburgh.
 10:30—WBBM—People's Platform discusses the Balkan crisis.
 10:45—WMAQ—"Columbia: A Study in Democracy," with Dr. Robert S. Platt, T. Walter Johnson, and Joseph H. Spear.

VARIETY, COMEDY, AND DRAMA.

Noon—W-G-N—Bondwagon, with Woody Herman's music and Marie Nash.
 3:00 p. m.—WBBM—Home Front Reporter. Guest: Mrs. Jimmy Doolittle.
 4:45—WBBM—American Women, with Elolse Kummer as narrator.
 7:30—W-G-N—Sherlock Holmes presents "The Retired Colourman."
 8:00—WENR—Gang Busters in another crime dramatization.
 8:00—WBBM—Playhouse: Madeleine Carroll and Raymond Massey, co-star in "Casablanca."
 8:30—W-G-N—Double or Nothing. Guest: J. E. Baker, aviation expert.
 8:30—WBBM—That Brewster Boy, starring Arnold Stang as Joey.
 8:30—WMAQ—People Are Funny, quiz, with Art Baker as conductor.
 9:00—WBBM—Thanks to the Yanks. Comedy quiz, with Bob Hawk, M. C.
 9:30—W-G-N—Soldiers with Wings, with Jean Parker, Mischa Auer.

MUSIC.

10:15 a. m.—W-G-N—Musical Milkwagon, with Curt Massey, Patti Clayton.
 6:00 p. m.—WJJD—Dinner concert: Chopin's "Polonaise Nulitane."
 7:00—WMAQ—Concert, with Lucille Manners and Ross Graham.
 7:30—WLS—Meet Your Navy, with Durward Kirby, M. C., and Lt. Comdr. Eddie Penbody. Guests: Seamen Bobby Riggs and Walter C. Crews.
 8:00—WMAQ—Waltz Time, with Frank Munn and Evelyn MacGregor.
 8:30—WENR—Spotlight Bands featuring Vincent Lopez's orchestra.
 10:05—WIND—Symphonic hour: "In the Steppes of Central Asia."



Nigel Bruce plays the role of Dr. Watson in the Sherlock Holmes series heard at 7:30 p. m. Fridays over W-G-N and Mutual.

News Broadcasts

MORNING.

7:00—WBBM	8:00—WIND	10:00—WJJD
7:00—WIND	8:15—WLS	10:00—WIND
7:00—WCFL	8:45—WIND	10:30—WIND
7:00—WLS	8:55—WJJD	10:45—WLS
7:10—W-G-N	9:00—W-G-N	11:00—W-G-N
7:15—WBBM	9:00—WIND	11:00—WIND
7:55—WMAQ	9:15—WCFL	11:00—WBBM
8:00—W-G-N	9:30—WLS	11:30—W-G-N
8:00—WBBM	10:00—W-G-N	11:30—WMAQ

AFTERNOON.

12:00—WIND	1:00—WIND	4:00—WIND
12:00—WJJD	1:30—WCFL	5:00—WAAZ
12:00—WCFL	1:45—W-G-N	5:00—WBBM
12:30—W-G-N	2:00—WIND	5:00—WIND
12:30—WMAQ	2:00—WBBM	5:25—W-G-N
12:30—WLS	2:15—WLS	5:30—WJJD
12:45—WCFL	3:00—WIND	5:45—WBBM
1:00—WCFL	3:30—WBBM	5:45—WMAQ

EVENING.

6:00—W500	8:00—WCFL	10:30—W-G-N
6:00—WIND	8:00—WIND	10:30—WBBM
6:00—WLS	8:15—W-G-N	10:30—WENR
6:00—WBBM	8:45—WIND	11:00—W-G-N