

TIP OF THE MORNING: "The Adventures of Ozzie and Harriet" will be with us again next season.

SOMERSETT MAUGHAM might not like Katharine Cornell's approach to his comedy, "The Constant Wife," but a capacity audience at the Wisconsin Union theater Monday night wouldn't agree with him.

The play was Miss Cornell's rather than Maugham's in one chief respect, and for today's public it's just as well. It was intended to focus attention on the feminist movement and to show, through what W. H. Beyer calls "the oblique approach of comedy," that women certainly can run things when they take a notion.

We need no playwright today to point up woman's equality with man in either trade or drawing room.

So Miss Cornell pictured Constance Middleton as a lovable wife who had lost her husband's love, and who made the best of it most ingeniously. She knew of her husband's infidelity before her prying sister and gossip mother could tell her; she was able to put him on the spot, partly because he was a poor dissembler and mostly because she had a sense of humor; and he was able to win him back.

Mrs. Middleton compounded the play's essential triangle with a sweetheart out of the past, but Miss Cornell's portrayal left one wondering whether, and doubting that, this warm woman was as literal in planning her escapade as her husband was in believing in it.

The star and the rest of the cast played most of the show for laughs, particularly in the hilarious scenes in which Miss Cornell brought her husband face to face first with his mistress and her husband and again with the man she called her new love.

Margery Maude was first-rate as a slightly modernized Victorian. Eve Leonard-Boyer's talents were largely wasted on a slight role as a business woman. John Emery was properly befuddled as the returning sweetheart and Robert Fleming was credible as the self-centered husband.

Gertrude Musgrove, as the sister, and Anna Cameron, as the girl friend, were debatable in their characterizations; there may be such women. Claude Horton appeared briefly and well as the husband caught in the middle of Constance's planning.

Donald Oenslager's set was, as his always are, in the spirit of both the play and the star's interpretation.

The play will be repeated at 3:30 and 8 p.m. today.

GATHERING OF THE CLAN: Thirty-seven grade school pupils who won honors as top artists in connection with the "Let's Draw" broadcasts on WHA and the state FM network will be heard today at 1:30 p. m. in the season's final program.

The lads and lasses from around the state met Saturday in Radio Hall for the annual "Gathering of the Clan" with their radio art teacher, James A. Schwalbach. For many of the pupils from 19 schools, this was the first glimpse of their instructor.

They arrived early Saturday and toured Radio Hall, the University of Wisconsin art education department, the Memorial Union arts and crafts shop, and the student art show. After luncheon in Tripp Commons, they returned to Radio Hall to record today's broadcast. Work of these winners was chosen from among more than 60,000 drawings submitted during the

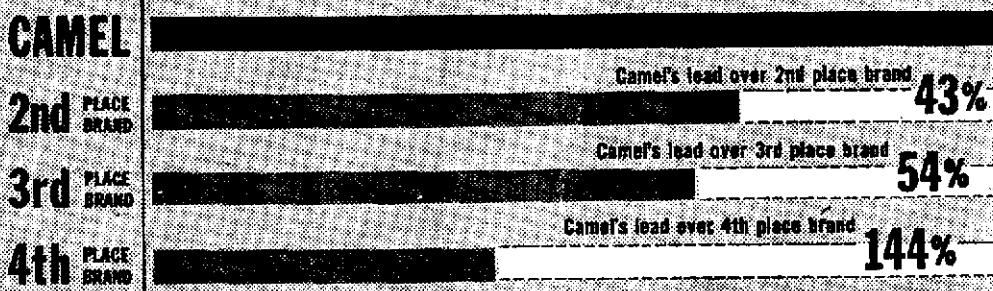
Get the best at Home Maker's HARDWARE & APPLIANCE, INC. 123 W. Mifflin St.

Latest published figures again show

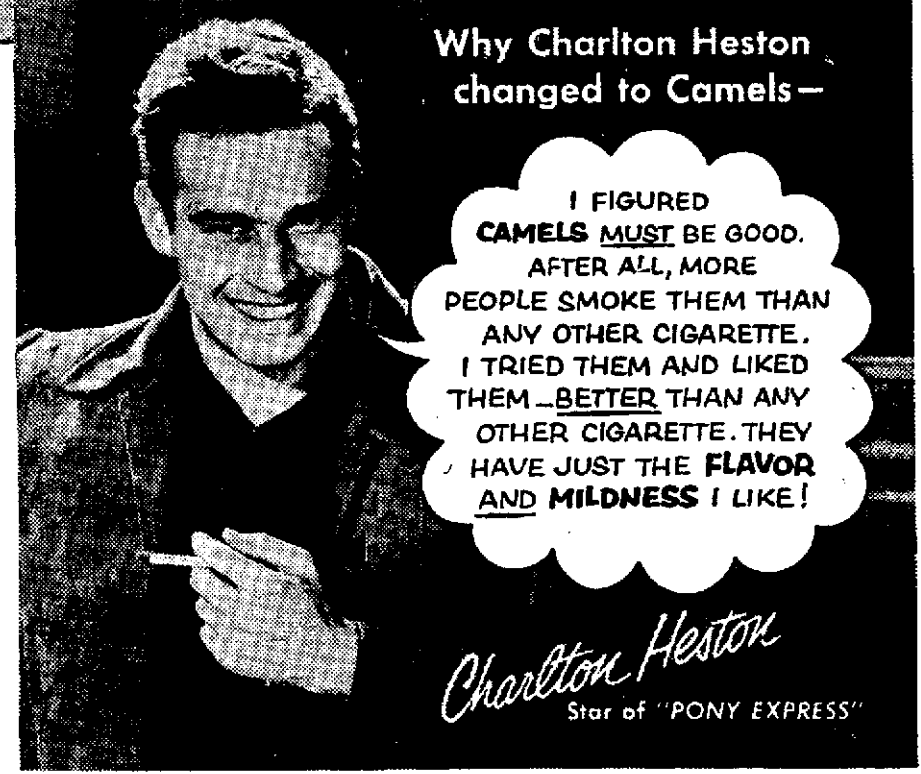
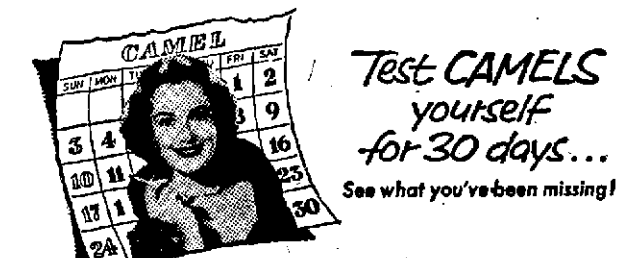
MORE PEOPLE CHOOSE CAMELS THAN ANY OTHER BRAND!

America's smokers give CAMELS the Greatest Vote of Confidence in cigarette history!

POPULARITY STANDINGS OF THE 4 LEADING CIGARETTES*



IN THE face of the extravagant claims and challenges of others, in the face of all kinds of new-fangled smokes, Camel's lead in popularity has been growing and growing!



Why Charlton Heston changed to Camels—

I FIGURED CAMELS MUST BE GOOD. AFTER ALL, MORE PEOPLE SMOKE THEM THAN ANY OTHER CIGARETTE. I TRIED THEM AND LIKED THEM BETTER THAN ANY OTHER CIGARETTE. THEY HAVE JUST THE FLAVOR AND MILDNESS I LIKE!

Charlton Heston Star of "PONY EXPRESS"

Camel's Mildness and Flavor agree with more people than any other cigarette

Producer of Play Starring Uta Hagen Arrives Wednesday

Alfred de Liagre Jr., co-producer of "The Deep Blue Sea," will arrive in Madison on Wednesday for the opening of the play starring Uta Hagen at the Wisconsin Union theater.

Miss Hagen took over the role this week at Minneapolis, replacing Margaret Sullivan. This will be her first home-town appearance in four years. She is the daughter of Prof. Oskar F. L. Hagen of the University of Wisconsin department of art history and criticism.

DeLiagre has a long string of successes to his credit, including "The Madwoman of Chailiot," "The Voice of the Turtle," and "Yes, My Darling Daughter." This is his first collaboration with John C. Wilson, also a producer of Broadway hits.

"The Deep Blue Sea" will be presented at 8 p. m. Wednesday and Thursday. Tickets are still on sale at the Wisconsin Union theater boxoffice.

John Blank, Elroy, Discharged from Army

ELROY—John Blank, son of Mr. and Mrs. John Blank Sr., is now at home following discharge from the Army after two years service.

Blank served 17 months overseas. He will return to work at the Wisconsin Co-Op Creamery at Union Center.

year. Only one out of every 2,500 pupils enrolled in the course was selected for "Clan" membership.

The winners were: Elizabeth Bercker, Eleanor Ruzisek, Don Misiewicz, Bonnie Bercker, Rosemarie Brackman, Cheryl Martin, and Sally Brauneis, Elm Grove;

Mary LaFond, Carol Dowling, Mary Ann Walsh, Jayn Quasney, Mary Cannon, and Susan Strachota, Wauwatosa;

Mary Kellnhauser and Katherine Nash, from two schools in Menasha;

Jeanette DuCharme, Arleen St. Jacques, Prairie du Chien;

John Kingsley, Watertown; Betty Jane Franks, Sun Prairie; Willa Mae Winkler, Wisconsin Rapids;

Jane Pakenkopf, Neillsville; LaVern Hjelmsand, Allen MacGregor, Jerry Layton, and Barbara Potts, La Crosse;

Seanna Holtz, Columbus; Judy Roedig and Marlene Pozzoki, Manitowish;

Palmer Simerlein and Thomas Pichardt, Waukesha;

Carl Wamndahl, Balsam Lake; Lynn Cooley, New Holstein; Tommy Tiber, Hustler;

Sue Anne Baye and Harold Seebeker, Mauston;

Carol Rickert, Marshfield, and David Oleson, Sugar Bush.

Radio Timetable

Table with columns for WIBA, WISC, WKOW, and WIBU, listing various radio programs and their times.

Starred programs are also carried on corresponding FM stations. FM channels: WIBA-FM, 101.5 M. WVCV (WIBU), 94.9 M. WISC-FM, 98.1

THE QUIET LIFE WINSTON-SALEM, N. C. (J.P.)—Detective Sgt. Ed Hemmings spent more than a quarter of a century on the force and never pulled his pistol from its holster. "Maybe it was luck," Hemmings explained as he retired recently. "But I've always made it a point to reason and let the other fellow tell his side."

Today's Radio Highlights

Music 4:30 p. m. — Curt Massey (WBBM): "Tell Me You're Mine," "Red Canary," "A ny where I Wander," "Moonlight Bay." 7 p. m. — Eddie Fisher (WIBA): new series with Don Ameche as host; Anna Maria Alberghefti, first guest.

Drama 7 p. m. — Johnny Dollar (WBBM): blackmail at a body-building gymnasium. 7:30 p. m. — High Adventure (WISC): airline pilots find danger in wilds of South America. Mr. and Mrs. North (WKOW): marital infidelity leads to "Date with a Corpse."

Religion 10:15 p. m. — Your Pastor Speaks (WIBA): the Rev. Charles A. Puls, Luther Memorial church.

Discussion 11 a. m. — Freshman Forum (WHA): "Mathematics in Science, in Technology, and in Humanism," Prof. R. E. Langer.

3:30 p. m. — Ivory Tower (WHA): "The Liberal Revolution in Education," Dr. A. Castelli.

5:30 p. m. — Legislative Forum (WHA): "Problems in Government," Assemblyman A. R. Godar (R-Milwaukee).

7:30 p. m. — Humane Week (WFMF): Alexius Baas.

8 p. m. — America's Town Meeting (WISC): "Can We Afford a Trade-Not Aid Policy?," Rep. Hale Boggs (D-La.), Sen. George Wallace (R-Ne).

8:15 p. m. — W. J. Campbell (WISC): former University of Wisconsin regent opposes Gov. Kohler's integration plan.

9:45 p. m. — Humane Week (WKOW): Alexius Baas.

Sports 11:25 a. m. — Baseball (WISC): Braves vs. Dodgers.

12:25 p. m. — Baseball (WFMF): Cubs vs. Phillies.

Variety 7:30 p. m. — Red Skelton (WIBA): another week at "Deady's" dude ranch.

8 p. m. — Martin and Lewis (WIBA): with Anne Baxter in heart-throb drama of emotion and commotion.

8:30 p. m. — Fibber McGee and Molly (WIBA): Fibber finds he has an understanding wife.

Farm Programs 7:22 a. m. — Farm Feature (WHA): "May Weed Control," Dwight Forsyth.

12:15 p. m. — Farm Service (WIBA): "Feeding Out Pigs with Alfalfa Pasture," C. S. Pierce, Brodhead, Myron Jeglum, Green County agent; Frank Mayfield.

12:30 p. m. — Farm Program (WHA): "Chemical Weeding of Vegetable Crops," L. G. Holm; John Schoeneman; "Tips on Disease Control in the Garden," Earl Wade.

For Children 9:30 a. m. — Growing Up (WHA): "Winners All."

1:30 p. m. — Let's Draw (WHA): annual "gathering of the clan."

Miscellaneous 8 a. m. — Breakfast Club (WISC): at Cleveland, O.

Coke Time advertisement featuring Eddie Fisher and Don Ameche, with Coca-Cola logo.

RCA Victor advertisement with text: "Every Year More People Buy RCA Victor Than Any Other TELEVISION. C. C. Collins & Son, Inc. 2308 University Ave."

Setchell Carlson advertisement: "Unitized Construction! Carl's Radio & TV Service 939 S. Park St. Open Wed. & Fri. Evenings Phone 6-4790"

RCA Victor Magnavox TV advertisement: "Two great TV names— RCA Victor Magnavox TV under the roof of one of Madison's oldest and largest dealers. Choose where the choice is best! Over 37 Years at 27 W. Main St."

Table of radio schedules for WHA, WHA-FM, and WMFM, listing programs and times.

DeForest High Band to Present Concert advertisement: "DEFOREST — DeForest High school's high-rated musical organizations and soloists will give a concert at 7:45 p.m. Friday in the school gymnasium. The band and choruses set a new record for the school when all new first-division ratings last week at the Sun Prairie district musical festival."