

TERRY AND THE PIRATES

THE UNEXPECTED GENIUS

By George Wander



HOPALONG CASSIDY

AMERICA'S FAVORITE COWBOY

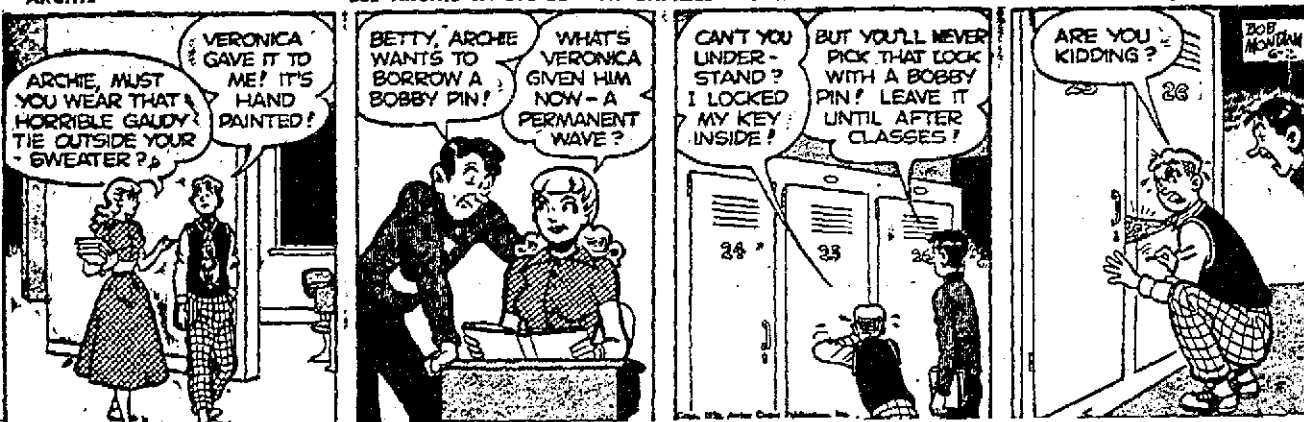
By DAN SPIEGEL



ARCHIE

SEE ARCHIE IN BIG SUNDAY EXPRESS COLORED COMIC SECTION

By MONTANA



MARY WORTH

REAL HELP FOR FORD

By KEN ALLEN



SMILIN' JACK

WASTED WARNINGS

By ZACK MOSLEY



JACK ARMSTRONG

TAKING IT ON THE CHIN

By BOB SCHOENKE



ORPHAN ANNIE

USEFUL GIRL

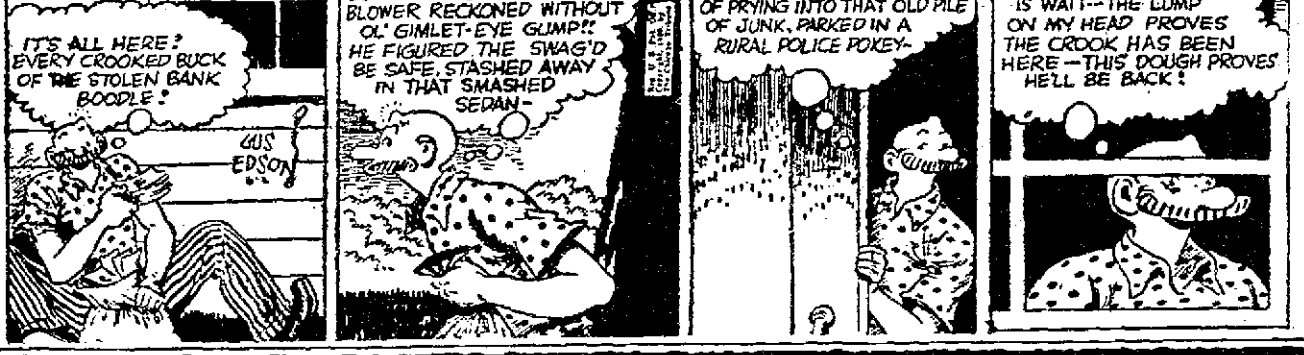
By HAROLD GRAY



THE GUMPS

DEDUCTION

By GUS EDSON



Spotlighting the Dial

Popular Programs

Arthur Godfrey, KTSA, 9:15 a.m. — The gravel-voiced comedian and ukelele singer, and all the little Godfreys. Holland and Engle Show, KTSA, 10:30 a.m. — Music offered up in the happy Engle manner. Adolph Hofner's Wranglers, KTSA, 12:30 p.m. — Western and folk music from a well-known band. Bobby Burns Orchestra, KTSA, 3:30 p.m. — Dance tunes and good vocalizing scheduled by Bobby Burns. Beulah, KTSA, 6 p.m. — Hattie McDaniel of movie and radio fame, plays the lead in this comedy program. Meredith Willson, WOAI, 6:15 p.m. — Willson will have as his guest the comical "Scandi-hoovian" of radio, Yogi Yorgenson. Jack Smith Sings, KTSA, 6:15 p.m. — Margaret Whiting adds her luring voice to the Jack Smith program.

News

Lowell Thomas, KTSA, 5:45 p.m. — Ace newscaster brings the latest news happenings. Edward R. Murrow, KTSA, 6:45 p.m. — Murrow winds up his

TELEVISION

WOAI-TV

Channel 4 Friday Evening 6:25 — Don Winslow 6:45 — Teleneus 7:00 — Kukla, Fran and Ollie 7:15 — Kukla, Fran and Ollie 7:30 — We, The People 7:45 — We, The People 8:00 — Dance Time 8:15 — Dance Time 8:30 — What's My Line? 8:45 — What's My Line? 9:00 — Bob Hope Show 10:30 — Weather Cast

KEY-TV

Channel 5 10:50-11:00 — Test Pattern 11:00 — Sign On and Recorded Music 11:20 — Program Previews 11:30 — Children's Theater 6:30 — KEVL News 7:30 — KEVL County Fair 7:30 — Frontier Theater — "Skull and Crown" (First Episode) 8:00 — Film "Hauca Village" 8:30 — Boxing from New York 9:45 — Coming Attractions 9:45 — Sign-Off

MANY NEVER SUSPECT CAUSE OF BACKACHES

As we get older, stress and strain, over exertion, excessive smoking or exposure to cold, sometimes slows down kidney function. This may lead many folks to complain of nagging backache, loss of pep and energy, headaches and dizziness. Getting up nights or frequent passages may result from minor bladder irritations due to cold, dampness or dietary indiscretions. If your discomforts are due to these causes, don't wait! Try Doan's Pills, a mild diuretic. Used successfully by millions for over 60 years. While these symptoms may often otherwise occur, it's amazing how many times Doan's give happy relief — help the 15 million of kidney tubes and filters flush out waste. Get Doan's Pills today! (Adv.)



BOB HOPE on TV today!

9:00 to 10:30 P.M., C.S.T. WOAI-TV

"Star Spangled Revue"

ALSO STARRING — BEATRICE LILLIE - FRANK SINATRA CONDOES & BRANDON - PEGGY LEE AND MANY OTHERS! Produced by Max Yerkman You loved the Radio Show! Don't miss this bigger and better show!

FRIGIDAIRE

brief stay in Europe, broadcasting the second of two programs from London after his coverage of the crucial week end in Berlin. Radio Newspaper, KTSA, 10 p.m. — Full report of the day's news from the local as well as state, national and international viewpoints.

Talent Hunt

The Show Goes On, KTSA, 7 p.m. — Robert Q. Lewis seeks performers for spot in "Texas Lil Darlin'."

Air Force

Air Force Hour, KMCA, 8 p.m. — Interviews with French military personnel attending armed forces schools in this country — plus music.

Homemaking Hints from TreeSweet. Freeze 'Lemon-Ice Cubes' in Refrigerator. Mrs. W. M. Starkey of Los Angeles, Calif., mixes half water and half lemon juice in refrigerator tray for lemon-ice cubes. Always ready-to-use. Saves time... there's no squeezing, no seeds to strain. You use pure, vitamin-rich TreeSweet in every way you'd use fresh-squeezed lemon juice... and it really costs much less. Try TreeSweet!

NOTHING TO WORRY ABOUT! ... IF YOU HAVE CASH TO MEET emergencies. Smart folks plan ahead. They save for the day when there's a sudden need for money. Thousands save at this time-tested Association where liberal dividends (currently 2 1/2%) help reserve funds grow ever larger. Safety insured. SAN ANTONIO Building & Loan ASSOCIATION 401 NAVARRO GARFIELD 6211 W. W. McManis, President

RADIO While this newspaper makes every effort to print accurate listings, it cannot be responsible for last minute changes made by radio stations.

FRIDAY, JUNE 2, 1950

Table with columns for radio stations: KTSA-550 (CBS), KMCA-630 (MUTUAL), KABC-680 (ABC), WOAI-1200 (NBC). Lists programs for A.M., P.M., and FRIDAY AFTERNOON.

Table with columns for radio stations: KONO-860, KCOR-1350, KIWW-1540. Lists programs for A.M., P.M., and FRIDAY EVENING.

FOLLOWING KTSA PROGRAMS WILL BE BROADCAST ON KTSA AM (550 KC) and FM (101.5 MC) ... from 3:00 P.M. to 10:30 P.M.

Table listing KTSA programs from 3:00 P.M. to 10:30 P.M., including Ladies Fair, Bobby Byrnes Orch., Hill Country Hits, etc.

FRIDAY EVENING

Table listing Friday evening programs from 6:00 P.M. to 11:45 P.M., including Beulah, Jack Smith Sings, Bobby Burns, etc.

CHILDREN... Make an Interesting & Educational SCRAPBOOK (and Receive Membership Certificate) for your UNCLE RAY'S CORNER... Appearing Daily in your San Antonio Express

One-Day Service on WATCH REPAIR! MISSION 519 E. Houston