

Radio Program Schedules by the Clock

TONIGHT									
WIBA 1310 kc.	WKOW 1070 kc.	WMAQ 870 kc.	WBBM 780 kc.	WENR-WLS 890 kc.	WGN 720 kc.	WIBU 1240 kc.	WISC 1480 kc.		
5:00 Story Corner	Adventure Parade	News	News	Green	Adventure Parade	Street Interview	Green		
5:15 Sports Time	Hy Time	Garraway	News	Hornet	Supernatural	University	Hornet		
5:30 Sports News	Tom Mix	News	Herb Shriner	Jack	Dr. Bradley	Special	Jack		
5:45 Supper Club	News Weather	Jimmy Blade	Lowell Thomas	Armstrong	Dr. Bradley	UW Special	Armstrong		
6:00 News of World	Dinner Music	News of World	News	News Markets	Dr. Bradley	Sports Time	S. C. Hill: 5:15		
6:15 News of World	Inside of Sports	Home Towners	Club 13	News	John Nesbitt	Serenade	Elmer Davis		
6:30 News of World	Inside of Sports	Richard Barkness	Edw. E. Murrow	Relaxing	Edw. E. Murrow	News	Belaxin		
6:45 To Be Announced	Madison 5	This is Your Life	Mystery	Peter Donald	George	Serenade in	Youth Asks		
7:00 A To Z	Catholic Hour	At Your Life	Theater	Earl Godwin	O'Hanlon	Musical	Hari Godwin		
7:15 With Judy	Detective Hour	With Judy	Mr. and Mrs. North	America's	Story: Gardner	News	America's		
7:30 Bob Hope	Gabriel Heatter	Bob Hope	Melody	America's	Gabriel Heatter	News	America's		
7:45 Fibber McGee and Molly	News	Fibber McGee and Molly	Lane with Luigi	America's	Melody Lane with Luigi	News	America's		
8:00 Big News	Jazz	Big News	Hit the Spot	Detroit	American	News	Detroit		
8:15 People Are Funny	Private Stock	People Are Funny	Music for Miltard Chicagoans	Freedom Ring	Freedom Ring	News	Freedom Ring		
8:30 News	News	News	Supper Club	Spring Serenade	Spring Serenade	News	Spring Serenade		
8:45 News	News	News	Supper Club	Supper Club	Supper Club	News	Supper Club		
9:00 News	News	News	Supper Club	Supper Club	Supper Club	News	Supper Club		
9:15 News	News	News	Supper Club	Supper Club	Supper Club	News	Supper Club		
9:30 News	News	News	Supper Club	Supper Club	Supper Club	News	Supper Club		
9:45 News	News	News	Supper Club	Supper Club	Supper Club	News	Supper Club		
10:00 News	News	News	Supper Club	Supper Club	Supper Club	News	Supper Club		
10:15 News	News	News	Supper Club	Supper Club	Supper Club	News	Supper Club		
10:30 News	News	News	Supper Club	Supper Club	Supper Club	News	Supper Club		
10:45 News	News	News	Supper Club	Supper Club	Supper Club	News	Supper Club		
11:00 News	News	News	Supper Club	Supper Club	Supper Club	News	Supper Club		
11:15 News	News	News	Supper Club	Supper Club	Supper Club	News	Supper Club		
11:30 News	News	News	Supper Club	Supper Club	Supper Club	News	Supper Club		
11:45 News	News	News	Supper Club	Supper Club	Supper Club	News	Supper Club		

WEDNESDAY									
WIBA 1310 kc.	WKOW 1070 kc.	WMAQ 870 kc.	WBBM 780 kc.	WENR-WLS 890 kc.	WGN 720 kc.	WIBU 1240 kc.	WISC 1480 kc.		
6:00 Farm Frolic	Chore	News	Paul	Farm Bulletin	Old Time	Silent	Top of Morning		
6:15 Eddy Arnold	Time	News	Gibson	Devotions	Music	Silent	News: Top Morn		
6:30 News of World	News of World	News	News	News	News	Silent	News: Top Morn		
6:45 News of World	News of World	News	News	News	News	Silent	News: Top Morn		
7:00 News of World	News of World	News	News	News	News	Silent	News: Top Morn		
7:15 News of World	News of World	News	News	News	News	Silent	News: Top Morn		
7:30 News of World	News of World	News	News	News	News	Silent	News: Top Morn		
7:45 News of World	News of World	News	News	News	News	Silent	News: Top Morn		
8:00 News of World	News of World	News	News	News	News	Silent	News: Top Morn		
8:15 News of World	News of World	News	News	News	News	Silent	News: Top Morn		
8:30 News of World	News of World	News	News	News	News	Silent	News: Top Morn		
8:45 News of World	News of World	News	News	News	News	Silent	News: Top Morn		
9:00 News of World	News of World	News	News	News	News	Silent	News: Top Morn		
9:15 News of World	News of World	News	News	News	News	Silent	News: Top Morn		
9:30 News of World	News of World	News	News	News	News	Silent	News: Top Morn		
9:45 News of World	News of World	News	News	News	News	Silent	News: Top Morn		
10:00 News of World	News of World	News	News	News	News	Silent	News: Top Morn		
10:15 News of World	News of World	News	News	News	News	Silent	News: Top Morn		
10:30 News of World	News of World	News	News	News	News	Silent	News: Top Morn		
10:45 News of World	News of World	News	News	News	News	Silent	News: Top Morn		
11:00 News of World	News of World	News	News	News	News	Silent	News: Top Morn		
11:15 News of World	News of World	News	News	News	News	Silent	News: Top Morn		
11:30 News of World	News of World	News	News	News	News	Silent	News: Top Morn		
11:45 News of World	News of World	News	News	News	News	Silent	News: Top Morn		

WEDNESDAY (Continued)									
WIBA 1310 kc.	WKOW 1070 kc.	WMAQ 870 kc.	WBBM 780 kc.	WENR-WLS 890 kc.	WGN 720 kc.	WIBU 1240 kc.	WISC 1480 kc.		
1:00 News	News	News	News	News	News	Silent	News		
1:15 News	News	News	News	News	News	Silent	News		
1:30 News	News	News	News	News	News	Silent	News		
1:45 News	News	News	News	News	News	Silent	News		
2:00 News	News	News	News	News	News	Silent	News		
2:15 News	News	News	News	News	News	Silent	News		
2:30 News	News	News	News	News	News	Silent	News		
2:45 News	News	News	News	News	News	Silent	News		
3:00 News	News	News	News	News	News	Silent	News		
3:15 News	News	News	News	News	News	Silent	News		
3:30 News	News	News	News	News	News	Silent	News		
3:45 News	News	News	News	News	News	Silent	News		
4:00 News	News	News	News	News	News	Silent	News		
4:15 News	News	News	News	News	News	Silent	News		
4:30 News	News	News	News	News	News	Silent	News		
4:45 News	News	News	News	News	News	Silent	News		
5:00 News	News	News	News	News	News	Silent	News		
5:15 News	News	News	News	News	News	Silent	News		
5:30 News	News	News	News	News	News	Silent	News		
5:45 News	News	News	News	News	News	Silent	News		
6:00 News	News	News	News	News	News	Silent	News		
6:15 News	News	News	News	News	News	Silent	News		
6:30 News	News	News	News	News	News	Silent	News		
6:45 News	News	News	News	News	News	Silent	News		
7:00 News	News	News	News	News	News	Silent	News		
7:15 News	News	News	News	News	News	Silent	News		
7:30 News	News	News	News	News	News	Silent	News		
7:45 News	News	News	News	News	News	Silent	News		
8:00 News	News	News	News	News	News	Silent	News		
8:15 News	News	News	News	News	News	Silent	News		
8:30 News	News	News	News	News	News	Silent	News		
8:45 News	News	News	News	News	News	Silent	News		
9:00 News	News	News	News	News	News	Silent	News		
9:15 News	News	News	News	News	News	Silent	News		
9:30 News	News	News	News	News	News	Silent	News		
9:45 News	News	News	News	News	News	Silent	News		
10:00 News	News	News	News	News	News	Silent	News		
10:15 News	News	News	News	News	News	Silent	News		
10:30 News	News	News	News	News	News	Silent	News		
10:45 News	News	News	News	News	News	Silent	News		
11:00 News	News	News	News	News	News	Silent	News		
11:15 News	News	News	News	News	News	Silent	News		
11:30 News	News	News	News	News	News	Silent	News		
11:45 News	News	News	News	News	News	Silent	News		

* Starred programs are also carried on corresponding FM stations... FM channels: WIBA-FM... 101.5 MHz, WKOW-FM (WIBU)... 94.9 MHz, WISC-FM... 88.3 MHz.

WHA and WHA-FM	
5:00 London Column	8:45 Dance Band Parade
5:15 Music You Want	10:00 News
5:30 News	10:05 Moonlight Moods
5:45 News	
6:00 Dinner Musicale	
6:15 News	
6:30 Music of the Masters	
6:45 News	
7:00 News in Brief	
7:15 Chamber Music	
7:30 Prof. Norman Cameron	
7:45 Composers Hour	
8:00 News (to 10:35)	
TUESDAY	
7:30 Band Wagon	
7:45 News Weather	
8:00 News	
8:15 News	
8:30 Morning Melodies	
8:45 News	
9:00 Prof. Fred Cassidy	
9:15 Nursery School of the Air	
9:30 Let's Find Out	
9:45 News	
10:00 North Hall Weather Report	
10:15 News	
10:30 Homemakers Program	
10:45 News	
11:00 Weather Report	
11:15 Piano Melodies	
11:30 News and Views	
11:45 Freshman Forum	
12:00 Noon Musicale	
P. M.	
12:30 News	
1:00 Farm Program	
1:30 Chapter a Day	
1:45 Let's Find Out	
2:00 News	
2:15 News	
2:30 Prof. William E. Stokes	
2:45 News of the Masters	
3:00 News	
3:15 News	
3:30 Editor's Desk	
3:45 Education Week	
WHA-FM-Only	
4:30 Organ Program	
4:45 Adventure Research	
5:15 Music You Want	
5:30 News	
5:45 Sports Roundup	
6:00 Dinner Musicale	
6:15 Operetta Favorites	
6:30 Music of the Masters	
6:45 News	
7:00 News in Brief	
7:15 Prof. Fred Cassidy	
7:30 Men's Hall Chorus	
7:45 Prof. Robert Riesel	
8:00 Composers Hour	
8:15 News (to 10:35)	
WFOV	
6:00 Musical Menu	
6:15 News	
6:30 Musical Menu	
6:45 News	
7:00 American Education Week	
7:15 Farm Hour	
7:30 Farm News	
7:45 Farm Hour	
8:00 University of Wisconsin Band	
8:15 Novelty Time	
8:30 Package of New Records	

Group to Greet 'Red Dean' Formed

A Madison committee to welcome the Rev. Hewlett Johnson, the "Red Dean" of Canterbury, and to make arrangements for his appearance in Madison, Nov. 10-11.

22 has been formed.

Members of the committee include the Revs. Erwin A. Gaede, William B. Waltmore, Charles R. Bell, Jr., Alfred W. Swan, David Matland, Justus Olson, A. H. Lambright and George Collins, R. a. b. i. Manfred Swarsky, Prof. E. A. Ross, emeritus, Charles Bunn, James L. McCamy, N. R. Feinsinger, and George C. Sellery, and Atty. Benjamin Bull.

Members of the committee do not "necessarily give endorsement to the contents of the dean's lecture, but are agreed on the principles of intellectual hospitality and free discussion," they said.

Dean Johnson was first denied the right to enter the country by an order of the state department. He became known as the "Red Dean" because of his friendship to Russia.

MADISON'S COZIEST THEATER

EASTWOOD

HELD OVER!

2nd SHOWING PICTURES IN MADISON

TRYING BERLINS' EASTERN PARADE

JUDY GARLAND FRED ASTAIRE

TOGETHER WITH

ROBERT MARCERTE YOUNG CHAPMAN

REBELLIOUS

IN TECHNICOLOR

YOU ARE INVITED To Attend Our Special "ARMISTICE" OL' TIME DANCE Thursday, Nov. 11

Music of the MID-STATE DRIVERS (50c, plus Tax)

VFW BALLROOM 113 East Mifflin

WIN FREE FOOD FOR A YEAR!

From Kroger

\$415,000 IN CASH and merchandise prizes

For contest information

Listen to LINDA'S FIRST LOVE

Time—Mon. through Fri. 11 A. M. WIBA

EXTRA! EXTRA!

BIG TOWN IS BACK!

BIG NEWS! BIG THRILLS!

Thrill to the fast-moving drama featuring Steve Wilson, crusading editor, and his lovely reporter Lorelei. Don't miss tonight's exciting adventure!

Sponsored by Lifebuoy Health Soap

STATION WIBA AT 9 TONIGHT!

Fine Foods and Drinks At The Right Price

COMPLETE DINNERS

SOUTHERN FRIED CHICKEN \$1.00

BONELESS PERCH \$1.00

BAKED HAM \$1.00

JUMBO SHRIMP \$1.25

TENDERLOIN \$1.25

T-BONE STEAK \$1.95

Served with Soup, Salad, French Fries, Hot Rolls, Beverage, and a Dessert.

HEAVY BEAN SOUP 15c

HOT CHILI 20c

WING'S INN Cafe & Bar

3052 East Washington Ave. Phone B. 2816

Tonight's Radio Aces

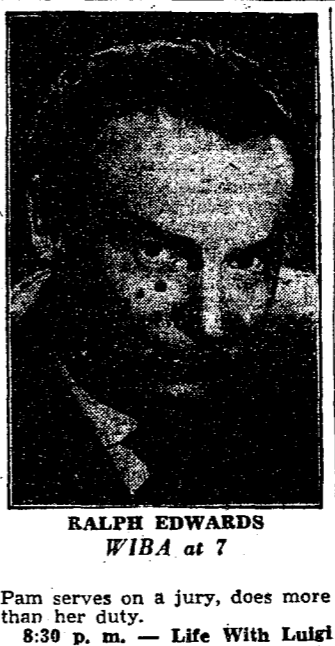
Discussion

6:30 p. m.—Report to the People (WIBA): Al Gilbert interviews Supt. Philip H. Falk of Madison public schools on effect of new pre-school population on education system.

7:30 p. m.—America's Town Meeting (WGN): "What Should We Do About Race Segregation?" Walter White, National Assn. for Advancement of Colored People; Raymond Sprigle, Pittsburgh; newsmen; Hodding Carter, Mississippi editor; Gov. Prentice Cooper, Tennessee.

9 p. m.—American Forum (WGN): Sen. J. C. O'Mahoney (D-Wyo.), Rep. H. D. Scott (R-La.).

11 p. m.—You and the World (WBBM): "Television's Effect on Family Life," Mrs. Leonard Lyons.



Bill Dowd's SPOTLIGHT Idea Theater

The Wisconsin Idea theater has another new idea. This time it's a touring company.

With a cast of players and Madison area players, the organization plans to send a play on weekend trips to Wisconsin cities. The production will be "Wisconsin Show Time," a revue-style show based on Badger stories and including sketches, dances, and songs, tied together with narration.

The revue was written by Prof. Robert Gard, director of the theater, and Edward Kamarcik. It will be directed by Martha Van Kleeck.

Tryouts will be held Monday, Nov. 22, after a reading of the script. They will be in the Rosewood room of the Memorial Union, and Gard and Miss Van Kleeck have invited anybody interested in the work to try out.

Under present plans, the troupe will go to cities close to Madison, so it can return after the performance. There may be some exceptions, however.

ORCHESTRA:

Among the 82 members of the University of Wisconsin Symphony orchestra who will play Sunday, Nov. 21, in the Wisconsin Union theater are: Elaine Brown, Jane Erickson, Robert Hornsby, Reuben Porter, and Peter Williams, violin; Harman Alley, David Hicks and Ann Winger, viola; David Wronski and Eugene Schwitzer, cello; Carl Dietzman and Rodney Gibson, bass.

Earl Gates and William Kaplan, clarinet; Barbara Hampton and Patricia Pienstorf, flute; John Ivis and Robert Williams, horn; Donald Kierulff,