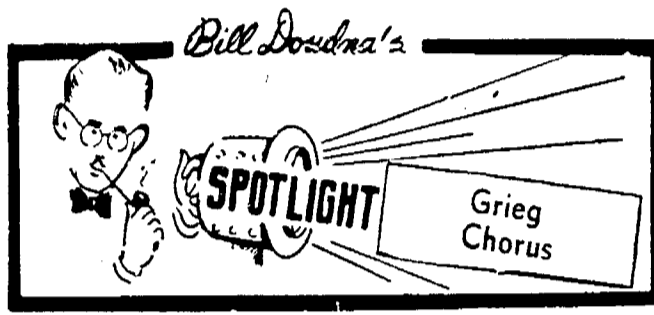


Convincing Evidence



Perry Knudsen portrays Lois, older sister of CBS' 'Junior Miss'...



The Grieg Male chorus will begin its 1948-49 season with a new director...

Westlund is professor of music at Milton college, where he conducts an outstanding choir...

BLACKFRIARS: Tryouts for the first production of the Madison chapter...

ART: The Gimble Centennial art collection and the Booth Tarkington collection of portraits...

RADIO: Gov. Thomas E. Dewey and Gov. Earl Warren, Republican candidates for president...

Radio Program Schedules by the Clock

Table with columns for radio stations (WIBA, WKOW, WMAQ, WBEM, WENR-WLS, WGN, WIBU, WISC) and their respective program schedules for the evening.

WEDNESDAY

Table with columns for radio stations and their program schedules for Wednesday.

* Starred programs are also carried on corresponding FM stations... FM channels: WIBA-FM... 101.5 M. WISC-FM... 98.9 M.

Tonight's Radio Aces

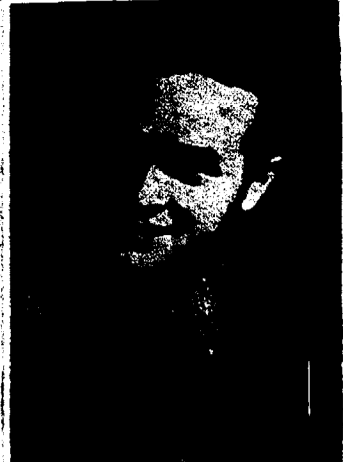
Variety 7 p. m. - Bob Hope (WMAQ) returns to the air with Doris Day, Billy Farrell, Les Brown's orchestra...

Music 6 p. m. - Supper Club (WIBA) second semi-final contest in 'So You Want to Lead a Band'...

Drama 6 p. m. - Mel Torme (WMAQ) gets off and on drug store mystery...

Discussion 6:30 p. m. - Political Talk (WIBA): Ralph Immell, candidate for Republican gubernatorial nomination...

Wednesday 8 a. m. - Fred Waring (WMAQ) 'Sleep, Kentucky Babe' (on WIBA at 9).



BOB HOPE WIBA at 8

9:30 a. m. - Political Forum (WHA): W. H. Dietrich, Republican candidate for attorney general...

10 a. m. - Homemakers (WHA): 'Your Home Equipment Problems,' Louise Young; 'The Community Looks to the Home Economists,' Mrs. T. L. Harris...

10:30 a. m. - Women Voters (WHA): 'Wisconsin's Fair Employment Practice Act,' Virginia Huebner...

11 a. m. - Representative Americans (WHA): 'Henry Ford'...

11:45 a. m. - American Dental Assn. (WMAQ): 'Children's Teeth,' round table discussion...

12 m. - Baseball (WJJD): White Sox vs. Boston...

12:30 p. m. - Farm Program (WHA): 'Savings Bonds in the Farm Budget'...

3:30 p. m. - University Band (WIBU): and Harry Stuhldreher...

4 p. m. - Political Forum (WHA): Frank E. Panzer, Republican candidate for lieutenant governor...

4:45 p. m. - A Look at Australia (WHA): 'Australian Library'...

5:30 p. m. - Book Trail (WHA): 'Denmark Caravan'...

PAID ADVERTISEMENTS: Authorized, issued and paid for by Ralph S. Immell, 1 W. Main Street, Madison, Wisconsin, for which \$7.20 has been paid The Wisconsin State Journal.

Hear Ralph IMMELL TONIGHT Republican Candidate for Governor discuss the ISSUES in this campaign WIBA 6:30 P. M.

Today and Tomorrow Entertainment

TUESDAY, SEPT. 14 Madison: 'Fighting Father Dunne' at 1, 4, 7 and 10; 'Blonde's Reward' at 1:30 and 8:35...

WFOV (FM) TONIGHT 104.9 Mc.

3:00 Piano Land 3:15 Children's Story Time 3:30 Korntopia 3:45 Musical Menu 4:00 News 4:15 News 4:30 Farm Hour 4:45 Farm Hour 4:55 Farm Hour 5:10 Excursions in Science 5:15 Novelty Film 5:30 Package of New Records 5:45 Dance Band Parade 10:30 News

Community Center

TUESDAY, SEPT. 14 Older Adult Club pot just supper, 6:30 p. m., with election of officers at 8 p. m.; Bridge instruction, 7:30 p. m.; Craft classes, 4:30 p. m.; Credit union, 8 p. m.; Theater guild, 8 p. m.

Special Events

TUESDAY, SEPT. 14 Candidates' Forum, Central high school auditorium, 7:45 p. m.

Organizations

TUESDAY, SEPT. 14 Madison Theater guild, 7:45 p. m., at Community Center.

Sports

TUESDAY, SEPT. 14 Baseball: Penn' Electrics vs. Plain Indians of the Sauk County league, 8 at 7:30 p. m.

S. A. (SATISFACTION ALL-WAYS) WITH A CHEVROLET NEW BLOCK ASSEMBLY Put the pep back under the hood of your old Chevrolet with a new factory built block assembly from Hult's...

BOB HOPE'S BACK TONIGHT! ...with an all-new show, same NBC network, same Tuesday night, but new time... 1 hour earlier. TUNE IN TONIGHT! TIME: 8:00 STATION WIBA Sponsored by SWAN SOAP

HOW LONG SINCE YOU'VE HAD YOUR ROOF CHECKED? A regular roof check-up is just as important as your regular dental check-up. It nips trouble in the bud! So if you haven't had your roof inspected this year, better call in your local Barrett applicator now...