

LEGAL NOTICES

NOTICE OF COMMUTATION OF SENTENCE
Please take notice that Florence Peters, sentenced to the Wisconsin State Prison for a term of 10 years for a conviction of murder, will apply for a commutation of sentence at the November 15th hearing. She was convicted on the 28th day of October, 1938. Pub. W.S.J. Oct. 8, 1946.

ADVERTISEMENTS FOR BIDS
Sealed bids will be received by the State of Wisconsin, Bureau of Purchases, State Capitol, Madison, Wis., on or before 2:30 p. m. October 21, 1946 to cover the furnishing of sugar. Specifications may be obtained upon application to the Bureau of Purchases. F. X. RITGER, Director. Pub. W.S.J. Tuesday, Oct. 8.

Report of an Affiliate of a National Bank
(An Official Publication)
Published in accordance with Section 5211, U. S. Revised Statutes, Report as of September 30, 1946, of First National Bank of Madison, Wisconsin, which is affiliated with The First National Bank of Madison, Wisconsin.

Report of an Affiliate of a National Bank
(An Official Publication)
Published in accordance with Section 5211, U. S. Revised Statutes, Report as of September 30, 1946, of First National Bank of Madison, Wisconsin, which is affiliated with The First National Bank of Madison, Wisconsin.

Report of an Affiliate of a National Bank
(An Official Publication)
Published in accordance with Section 5211, U. S. Revised Statutes, Report as of September 30, 1946, of First National Bank of Madison, Wisconsin, which is affiliated with The First National Bank of Madison, Wisconsin.

Report of an Affiliate of a National Bank
(An Official Publication)
Published in accordance with Section 5211, U. S. Revised Statutes, Report as of September 30, 1946, of First National Bank of Madison, Wisconsin, which is affiliated with The First National Bank of Madison, Wisconsin.

Report of an Affiliate of a National Bank
(An Official Publication)
Published in accordance with Section 5211, U. S. Revised Statutes, Report as of September 30, 1946, of First National Bank of Madison, Wisconsin, which is affiliated with The First National Bank of Madison, Wisconsin.

Report of an Affiliate of a National Bank
(An Official Publication)
Published in accordance with Section 5211, U. S. Revised Statutes, Report as of September 30, 1946, of First National Bank of Madison, Wisconsin, which is affiliated with The First National Bank of Madison, Wisconsin.

Report of an Affiliate of a National Bank
(An Official Publication)
Published in accordance with Section 5211, U. S. Revised Statutes, Report as of September 30, 1946, of First National Bank of Madison, Wisconsin, which is affiliated with The First National Bank of Madison, Wisconsin.

Report of an Affiliate of a National Bank
(An Official Publication)
Published in accordance with Section 5211, U. S. Revised Statutes, Report as of September 30, 1946, of First National Bank of Madison, Wisconsin, which is affiliated with The First National Bank of Madison, Wisconsin.

Report of an Affiliate of a National Bank
(An Official Publication)
Published in accordance with Section 5211, U. S. Revised Statutes, Report as of September 30, 1946, of First National Bank of Madison, Wisconsin, which is affiliated with The First National Bank of Madison, Wisconsin.

Report of an Affiliate of a National Bank
(An Official Publication)
Published in accordance with Section 5211, U. S. Revised Statutes, Report as of September 30, 1946, of First National Bank of Madison, Wisconsin, which is affiliated with The First National Bank of Madison, Wisconsin.

Report of an Affiliate of a National Bank
(An Official Publication)
Published in accordance with Section 5211, U. S. Revised Statutes, Report as of September 30, 1946, of First National Bank of Madison, Wisconsin, which is affiliated with The First National Bank of Madison, Wisconsin.

Report of an Affiliate of a National Bank
(An Official Publication)
Published in accordance with Section 5211, U. S. Revised Statutes, Report as of September 30, 1946, of First National Bank of Madison, Wisconsin, which is affiliated with The First National Bank of Madison, Wisconsin.

Warm Springs Shrine to FDR Proposed

WARM SPRINGS, Ga. (U.P.)—The Little White House, the green-and-white cottage where Pres. Roosevelt lived happily and died, will become a national shrine, if plans of a newly-appointed Roosevelt Memorial Commission work out.

The commission, authorized by the Georgia legislature, was appointed by Gov. Ellis Arnall to plan a "fitting memorial" to the late president who found in the warm pine hills here "another home" and healing help for his infantile paralysis.

The legislature appropriated \$200,000 for the project. Arnall said he hoped the Little White House site can be deeded to the state by the National Foundation for Infantile Paralysis.

Basel O'Connor, chairman of the foundation and former law partner of the late president, has been asked to serve as executive chairman of Georgia's memorial commission.

Today, the Little White House—a neat pine cottage designed after the presidential mansion in Washington—stands lonesomely in the woods, unchanged since Mr. Roosevelt's death in April, 1945.

Tourists still trickle by steadily, but a caretaker keeps them outside the white fence enclosing the grounds. There is no charge, and visitors may register. Except for a few postcards sold by the caretaker, there are no souvenirs.

The Infantile Paralysis Foundation, whose medical center is only a mile away through the woods, inspects the cottage regularly and fumigates it against pests and insects.

But no visitors have been allowed inside, and the premises are being kept as they were until plans are completed for the shrine.

Arnall said the state commission would plan another memorial if Georgia could not obtain the Little White House.

The main road through Warm Springs to Columbus, Ga., already has been designated the Roosevelt Memorial highway. It passes the foundation entrance, and is connected by an unpaved road with the Little White House.

Arnall said the state commission would plan another memorial if Georgia could not obtain the Little White House.

The main road through Warm Springs to Columbus, Ga., already has been designated the Roosevelt Memorial highway. It passes the foundation entrance, and is connected by an unpaved road with the Little White House.

Arnall said the state commission would plan another memorial if Georgia could not obtain the Little White House.

The main road through Warm Springs to Columbus, Ga., already has been designated the Roosevelt Memorial highway. It passes the foundation entrance, and is connected by an unpaved road with the Little White House.

Arnall said the state commission would plan another memorial if Georgia could not obtain the Little White House.

The main road through Warm Springs to Columbus, Ga., already has been designated the Roosevelt Memorial highway. It passes the foundation entrance, and is connected by an unpaved road with the Little White House.

Arnall said the state commission would plan another memorial if Georgia could not obtain the Little White House.

The main road through Warm Springs to Columbus, Ga., already has been designated the Roosevelt Memorial highway. It passes the foundation entrance, and is connected by an unpaved road with the Little White House.

Arnall said the state commission would plan another memorial if Georgia could not obtain the Little White House.

The main road through Warm Springs to Columbus, Ga., already has been designated the Roosevelt Memorial highway. It passes the foundation entrance, and is connected by an unpaved road with the Little White House.

Arnall said the state commission would plan another memorial if Georgia could not obtain the Little White House.

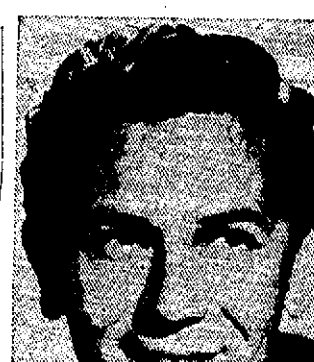
The main road through Warm Springs to Columbus, Ga., already has been designated the Roosevelt Memorial highway. It passes the foundation entrance, and is connected by an unpaved road with the Little White House.

Arnall said the state commission would plan another memorial if Georgia could not obtain the Little White House.

The main road through Warm Springs to Columbus, Ga., already has been designated the Roosevelt Memorial highway. It passes the foundation entrance, and is connected by an unpaved road with the Little White House.

Arnall said the state commission would plan another memorial if Georgia could not obtain the Little White House.

The main road through Warm Springs to Columbus, Ga., already has been designated the Roosevelt Memorial highway. It passes the foundation entrance, and is connected by an unpaved road with the Little White House.



JOHN GARFIELD
WBBM 8.30

WBBM 8.30
WBBM 8.30
WBBM 8.30

WBBM 8.30
WBBM 8.30
WBBM 8.30

WBBM 8.30
WBBM 8.30
WBBM 8.30

WBBM 8.30
WBBM 8.30
WBBM 8.30

WBBM 8.30
WBBM 8.30
WBBM 8.30

WBBM 8.30
WBBM 8.30
WBBM 8.30

WBBM 8.30
WBBM 8.30
WBBM 8.30

WBBM 8.30
WBBM 8.30
WBBM 8.30

WBBM 8.30
WBBM 8.30
WBBM 8.30

WBBM 8.30
WBBM 8.30
WBBM 8.30

WBBM 8.30
WBBM 8.30
WBBM 8.30

WBBM 8.30
WBBM 8.30
WBBM 8.30

WBBM 8.30
WBBM 8.30
WBBM 8.30

WBBM 8.30
WBBM 8.30
WBBM 8.30

WBBM 8.30
WBBM 8.30
WBBM 8.30

WBBM 8.30
WBBM 8.30
WBBM 8.30

WBBM 8.30
WBBM 8.30
WBBM 8.30

WBBM 8.30
WBBM 8.30
WBBM 8.30

WBBM 8.30
WBBM 8.30
WBBM 8.30

WBBM 8.30
WBBM 8.30
WBBM 8.30

WBBM 8.30
WBBM 8.30
WBBM 8.30

WBBM 8.30
WBBM 8.30
WBBM 8.30

WBBM 8.30
WBBM 8.30
WBBM 8.30

WBBM 8.30
WBBM 8.30
WBBM 8.30

Radio

WIBA 1310
WFL 1000
KMOX 1120
WHA 970
WIB 1240
WGN 720
WLB 700
WNR 890
WIND 580
WV 1010
WV 1010
WV 1010
WV 1010

WIBA 1310
WFL 1000
KMOX 1120
WHA 970
WIB 1240
WGN 720
WLB 700
WNR 890
WIND 580
WV 1010
WV 1010
WV 1010
WV 1010

WIBA 1310
WFL 1000
KMOX 1120
WHA 970
WIB 1240
WGN 720
WLB 700
WNR 890
WIND 580
WV 1010
WV 1010
WV 1010
WV 1010

WIBA 1310
WFL 1000
KMOX 1120
WHA 970
WIB 1240
WGN 720
WLB 700
WNR 890
WIND 580
WV 1010
WV 1010
WV 1010
WV 1010

WIBA 1310
WFL 1000
KMOX 1120
WHA 970
WIB 1240
WGN 720
WLB 700
WNR 890
WIND 580
WV 1010
WV 1010
WV 1010
WV 1010

WIBA 1310
WFL 1000
KMOX 1120
WHA 970
WIB 1240
WGN 720
WLB 700
WNR 890
WIND 580
WV 1010
WV 1010
WV 1010
WV 1010

WIBA 1310
WFL 1000
KMOX 1120
WHA 970
WIB 1240
WGN 720
WLB 700
WNR 890
WIND 580
WV 1010
WV 1010
WV 1010
WV 1010

WIBA 1310
WFL 1000
KMOX 1120
WHA 970
WIB 1240
WGN 720
WLB 700
WNR 890
WIND 580
WV 1010
WV 1010
WV 1010
WV 1010

WIBA 1310
WFL 1000
KMOX 1120
WHA 970
WIB 1240
WGN 720
WLB 700
WNR 890
WIND 580
WV 1010
WV 1010
WV 1010
WV 1010

WIBA 1310
WFL 1000
KMOX 1120
WHA 970
WIB 1240
WGN 720
WLB 700
WNR 890
WIND 580
WV 1010
WV 1010
WV 1010
WV 1010

WIBA 1310
WFL 1000
KMOX 1120
WHA 970
WIB 1240
WGN 720
WLB 700
WNR 890
WIND 580
WV 1010
WV 1010
WV 1010
WV 1010

WIBA 1310
WFL 1000
KMOX 1120
WHA 970
WIB 1240
WGN 720
WLB 700
WNR 890
WIND 580
WV 1010
WV 1010
WV 1010
WV 1010

WIBA 1310
WFL 1000
KMOX 1120
WHA 970
WIB 1240
WGN 720
WLB 700
WNR 890
WIND 580
WV 1010
WV 1010
WV 1010
WV 1010

WIBA 1310
WFL 1000
KMOX 1120
WHA 970
WIB 1240
WGN 720
WLB 700
WNR 890
WIND 580
WV 1010
WV 1010
WV 1010
WV 1010

WIBA 1310
WFL 1000
KMOX 1120
WHA 970
WIB 1240
WGN 720
WLB 700
WNR 890
WIND 580
WV 1010
WV 1010
WV 1010
WV 1010

WIBA 1310
WFL 1000
KMOX 1120
WHA 970
WIB 1240
WGN 720
WLB 700
WNR 890
WIND 580
WV 1010
WV 1010
WV 1010
WV 1010

WIBA 1310
WFL 1000
KMOX 1120
WHA 970
WIB 1240
WGN 720
WLB 700
WNR 890
WIND 580
WV 1010
WV 1010
WV 1010
WV 1010

WIBA 1310
WFL 1000
KMOX 1120
WHA 970
WIB 1240
WGN 720
WLB 700
WNR 890
WIND 580
WV 1010
WV 1010
WV 1010
WV 1010

WIBA 1310
WFL 1000
KMOX 1120
WHA 970
WIB 1240
WGN 720
WLB 700
WNR 890
WIND 580
WV 1010
WV 1010
WV 1010
WV 1010

WIBA 1310
WFL 1000
KMOX 1120
WHA 970
WIB 1240
WGN 720
WLB 700
WNR 890
WIND 580
WV 1010
WV 1010
WV 1010
WV 1010

WIBA 1310
WFL 1000
KMOX 1120
WHA 970
WIB 1240
WGN 720
WLB 700
WNR 890
WIND 580
WV 1010
WV 1010
WV 1010
WV 1010

WIBA 1310
WFL 1000
KMOX 1120
WHA 970
WIB 1240
WGN 720
WLB 700
WNR 890
WIND 580
WV 1010
WV 1010
WV 1010
WV 1010

WIBA 1310
WFL 1000
KMOX 1120
WHA 970
WIB 1240
WGN 720
WLB 700
WNR 890
WIND 580
WV 1010
WV 1010
WV 1010
WV 1010

WIBA 1310
WFL 1000
KMOX 1120
WHA 970
WIB 1240
WGN 720
WLB 700
WNR 890
WIND 580
WV 1010
WV 1010
WV 1010
WV 1010

WIBA 1310
WFL 1000
KMOX 1120
WHA 970
WIB 1240
WGN 720
WLB 700
WNR 890
WIND 580
WV 1010
WV 1010
WV 1010
WV 1010

WIBA 1310
WFL 1000
KMOX 1120
WHA 970
WIB 1240
WGN 720
WLB 700
WNR 890
WIND 580
WV 1010
WV 1010
WV 1010
WV 1010

WIBA 1310
WFL 1000
KMOX 1120
WHA 970
WIB 1240
WGN 720
WLB 700
WNR 890
WIND 580
WV 1010
WV 1010
WV 1010
WV 1010

Tonight's Aces

Discussion
7:30 p. m.—American Forum
(WIBU): "Is A National Political Change Necessary?"; Sen. Owen Brewster, chairman, Republican Senatorial Campaign committee; Rep. John Sparkman, chairman, speaker's bureau, Democratic National committee.

Miscellaneous
7:30 p. m.—Vox Pop (WBBM): program to help physically handicapped persons get jobs.

Variety
7 p. m.—Rudy Vallee (WIBA): with George Jessel, Rosemary and Carmel Myers; music includes "You Keep Coming Back Like a Song."

Variety
7 p. m.—Rudy Vallee (WIBA): with George Jessel, Rosemary and Carmel Myers; music includes "You Keep Coming Back Like a Song."

Variety
7 p. m.—Rudy Vallee (WIBA): with George Jessel, Rosemary and Carmel Myers; music includes "You Keep Coming Back Like a Song."

Variety
7 p. m.—Rudy Vallee (WIBA): with George Jessel, Rosemary and Carmel Myers; music includes "You Keep Coming Back Like a Song."

Variety
7 p. m.—Rudy Vallee (WIBA): with George Jessel, Rosemary and Carmel Myers; music includes "You Keep Coming Back Like a Song."

Variety
7 p. m.—Rudy Vallee (WIBA): with George Jessel, Rosemary and Carmel Myers; music includes "You Keep Coming Back Like a Song."

Variety
7 p. m.—Rudy Vallee (WIBA): with George Jessel, Rosemary and Carmel Myers; music includes "You Keep Coming Back Like a Song."

Variety
7 p. m.—Rudy Vallee (WIBA): with George Jessel, Rosemary and Carmel Myers; music includes "You Keep Coming Back Like a Song."

Variety
7 p. m.—Rudy Vallee (WIBA): with George Jessel, Rosemary and Carmel Myers; music includes "You Keep Coming Back Like a Song."

Variety
7 p. m.—Rudy Vallee (WIBA): with George Jessel, Rosemary and Carmel Myers; music includes "You Keep Coming Back Like a Song."

Variety
7 p. m.—Rudy Vallee (WIBA): with George Jessel, Rosemary and Carmel Myers; music includes "You Keep Coming Back Like a Song."

Variety
7 p. m.—Rudy Vallee (WIBA): with George Jessel, Rosemary and Carmel Myers; music includes "You Keep Coming Back Like a Song."

Variety
7 p. m.—Rudy Vallee (WIBA): with George Jessel, Rosemary and Carmel Myers; music includes "You Keep Coming Back Like a Song."

Variety
7 p. m.—Rudy Vallee (WIBA): with George Jessel, Rosemary and Carmel Myers; music includes "You Keep Coming Back Like a Song."

Variety
7 p. m.—Rudy Vallee (WIBA): with George Jessel, Rosemary and Carmel Myers; music includes "You Keep Coming Back Like a Song."

Variety
7 p. m.—Rudy Vallee (WIBA): with George Jessel, Rosemary and Carmel Myers; music includes "You Keep Coming Back Like a Song."

Variety
7 p. m.—Rudy Vallee (WIBA): with George Jessel, Rosemary and Carmel Myers; music includes "You Keep Coming Back Like a Song."

Variety
7 p. m.—Rudy Vallee (WIBA): with George Jessel, Rosemary and Carmel Myers; music includes "You Keep Coming Back Like a Song."

Variety
7 p. m.—Rudy Vallee (WIBA): with George Jessel, Rosemary and Carmel Myers; music includes "You Keep Coming Back Like a Song."

Variety
7 p. m.—Rudy Vallee (WIBA): with George Jessel, Rosemary and Carmel Myers; music includes "You Keep Coming Back Like a Song."

Variety
7 p. m.—Rudy Vallee (WIBA): with George Jessel, Rosemary and Carmel Myers; music includes "You Keep Coming Back Like a Song."

Variety
7 p. m.—Rudy Vallee (WIBA): with George Jessel, Rosemary and Carmel Myers; music includes "You Keep Coming Back Like a Song."

Variety
7 p. m.—Rudy Vallee (WIBA): with George Jessel, Rosemary and Carmel Myers; music includes "You Keep Coming Back Like a Song."

Variety
7 p. m.—Rudy Vallee (WIBA): with George Jessel, Rosemary and Carmel Myers; music includes "You Keep Coming Back Like a Song."

Variety
7 p. m.—Rudy Vallee (WIBA): with George Jessel, Rosemary and Carmel Myers; music includes "You Keep Coming Back Like a Song."

Market Reports

Madison Mart
Tuesday's quotations of the live stock market as furnished by Oscar Mayer and Co.

The following quotations are for good to choice hogs only:
Hog market: Steady.
All butcher hogs weighing 140 lbs. and up including sows and stags

Light lights 140-160 15.80
Light lights 160-180 15.80
Light lights 180-200 15.80
Light lights 200-220 15.80
Medium weights 220-250 15.80
Heavy weights 250-270 15.80
Heavy weights 270-290 15.80
Pkg sows 325-350 15.80
Pkg sows 350-425 15.80
Pkg sows 425-500 15.80

Cattle market: Steady.
Common to fair cows 8.50-9.00
Fair to good cows 9.00-9.50
Good to choice cows 9.50-10.00
Choice to prime cows 10.00-12.00

Canmer and cutter quotations follow:
Common to fair canners 6.50-7.00
Fair to good canners 7.00-7.25
Common to fair cutters 7.25-7.50
Fair to good cutters 7.50-8.00

Full quotations follow:
Butcher to fair hogs 8.50-9.00
Common to fair hogs 8.00-8.50
Fair to good hogs 8.00-10.00
Good to choice hogs 10.00-10.50
Good to choice beef bulls 12.00-13.00
Vealer market: Steady to 50 higher.

Wool market: Steady to 50 higher.
Belts 17.00
Good to choice 15.00-16.00
Medium 15.00-16.00
Cull and common 11.00-12.00
Cans 11.00-12.00

Quotations by the Frank Fruit Co. were:
Cabbage (new) crate 1.15
Oranges (case) 2.25-3.40
The wholesale prices of produce today

PRODUCE MARKETS
Quotations by the Frank Fruit Co. were:
Cabbage (new) crate 1.15
Oranges (case) 2.25-3.40
The wholesale prices of produce today

PRODUCE MARKETS
Quotations by the Frank Fruit Co. were:
Cabbage (new) crate 1.15
Oranges (case) 2.25-3.40
The wholesale prices of produce today

PRODUCE MARKETS
Quotations by the Frank Fruit Co. were:
Cabbage (new) crate 1.15
Oranges (case) 2.25-3.40
The wholesale prices of produce today

PRODUCE MARKETS
Quotations by the Frank Fruit Co. were:
Cabbage (new) crate 1.15
Oranges (case) 2.25-3.40
The wholesale prices of produce today

PRODUCE MARKETS
Quotations by the Frank Fruit Co. were:
Cabbage (new) crate 1.15
Oranges (case) 2.25-3.40
The wholesale prices of produce today

PRODUCE MARKETS
Quotations by the Frank Fruit Co. were:
Cabbage (new) crate 1.15
Oranges (case)