

(Programs listed in The Wisconsin State Journal are checked to the last possible moment. Changes may be made, however, at the discretion of stations and networks.)

Tonight's Aces

Drama
7 p. m. — Mr. and Mrs. North (WIBA) crooks steal their furniture...

Miscellaneous
8 p. m. — Dunninger (WENR); tries a numerical brainbuster...

Variety
7:30 p. m. — Carlton of Cheer (WIBA): "Confessin'"; "Trolley Song"...

Quiz
8:30 p. m. — Which Is Which? (WBBM): contestants w 111 identify Herbert Marshall...

Music
8:30 p. m. — Spotlight Bands (WENR): Jack Teagarden.

OTHER STATIONS THURSDAY
—MORNING—
8:00 Farm Service—WLS

NEWS BROADCASTS
TONIGHT
3:00 WCCO WBBM 8:30 WCFB

THURSDAY
A. M. 2:45 WLS
3:30 WIND WMAQ 3:30 WGN WIND

SPORTS REVIEWS
TONIGHT
5:45 WIBA WTMJ 6:30 WCFB

MARKETS
THURSDAY
A. M. 12:00 WBBM

THURSDAY
A. M. 12:00 WBBM

THURSDAY
A. M. 12:00 WBBM

THURSDAY
A. M. 12:00 WBBM

THURSDAY
A. M. 12:00 WBBM

THURSDAY
A. M. 12:00 WBBM

THURSDAY
A. M. 12:00 WBBM

THURSDAY
A. M. 12:00 WBBM

THURSDAY
A. M. 12:00 WBBM

THURSDAY
A. M. 12:00 WBBM

THURSDAY
A. M. 12:00 WBBM

THURSDAY
A. M. 12:00 WBBM

THURSDAY
A. M. 12:00 WBBM

THURSDAY
A. M. 12:00 WBBM

THURSDAY
A. M. 12:00 WBBM

THURSDAY
A. M. 12:00 WBBM

THURSDAY
A. M. 12:00 WBBM

THURSDAY
A. M. 12:00 WBBM

THURSDAY
A. M. 12:00 WBBM

THURSDAY
A. M. 12:00 WBBM

THURSDAY
A. M. 12:00 WBBM

THURSDAY
A. M. 12:00 WBBM

THURSDAY
A. M. 12:00 WBBM

THURSDAY
A. M. 12:00 WBBM

THURSDAY
A. M. 12:00 WBBM

THURSDAY
A. M. 12:00 WBBM

THURSDAY
A. M. 12:00 WBBM

THURSDAY
A. M. 12:00 WBBM

THURSDAY
A. M. 12:00 WBBM

THURSDAY
A. M. 12:00 WBBM

THURSDAY
A. M. 12:00 WBBM

THURSDAY
A. M. 12:00 WBBM

Table with columns: WIBA 1310, WCFB 1000, KMOX 1120, WHA 970, WTVL 1240, WGN 720, WTVL 620, WTVL 1150, WBBM 780, WMAQ 670, WLS 890, WCO 830

WIBA TONIGHT
5:00 The WIBA Rangers
5:30 News Edition
5:45 Meet the Team

OTHER STATIONS TONIGHT
5:15 Dick Tracy—WENR
5:15 Lyn Murray Orch.—WBBM
5:15 University Special—WIBU

WIBA THURSDAY
6:00 Morning Parade
6:30 News Report
6:30 NBC World News Roundup

WHA THURSDAY
7:30 Band Wagon
7:45 Morning News
7:55 WHA Program Review

THURSDAY
11:00 The Editor's Daughter—WMAQ
11:00 Kate Smith Speaks—WBBM
11:00 Eliza Jane—WTVL

THURSDAY
12:00 Dinnertime—WLS
12:00 Grendel's—WTVL
12:00 Elizabeth—WTVL

THURSDAY
12:00 Dinnertime—WLS
12:00 Grendel's—WTVL
12:00 Elizabeth—WTVL

THURSDAY
12:00 Dinnertime—WLS
12:00 Grendel's—WTVL
12:00 Elizabeth—WTVL

THURSDAY
12:00 Dinnertime—WLS
12:00 Grendel's—WTVL
12:00 Elizabeth—WTVL

THURSDAY
12:00 Dinnertime—WLS
12:00 Grendel's—WTVL
12:00 Elizabeth—WTVL

THURSDAY
12:00 Dinnertime—WLS
12:00 Grendel's—WTVL
12:00 Elizabeth—WTVL

THURSDAY
12:00 Dinnertime—WLS
12:00 Grendel's—WTVL
12:00 Elizabeth—WTVL

THURSDAY
12:00 Dinnertime—WLS
12:00 Grendel's—WTVL
12:00 Elizabeth—WTVL

THURSDAY
12:00 Dinnertime—WLS
12:00 Grendel's—WTVL
12:00 Elizabeth—WTVL

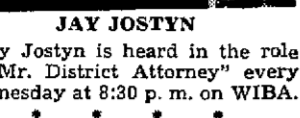
THURSDAY
12:00 Dinnertime—WLS
12:00 Grendel's—WTVL
12:00 Elizabeth—WTVL

THURSDAY
12:00 Dinnertime—WLS
12:00 Grendel's—WTVL
12:00 Elizabeth—WTVL

THURSDAY
12:00 Dinnertime—WLS
12:00 Grendel's—WTVL
12:00 Elizabeth—WTVL

THURSDAY
12:00 Dinnertime—WLS
12:00 Grendel's—WTVL
12:00 Elizabeth—WTVL

THURSDAY
12:00 Dinnertime—WLS
12:00 Grendel's—WTVL
12:00 Elizabeth—WTVL



JAY JOSTYN

Jay Jostyn is heard in the role of "Mr. District Attorney" every Wednesday at 8:30 p. m. on WIBA.

William Hain, and Robert Weede in excerpts from Frim's "The Firefly."

9:30 p. m. — The Northerners (WGN): "Sing a Song of Harvest," "Whispering," selections from "Blossom Time," "Indian Summer"

11:05 p. m. — Petrillo and Janette (WBBM): "I Dream of You," "Let Me Love You Tonight," "Always."

10:45 a. m. — What's Your Idea? (WGN, WIBU): interview with Hazel Cades, beauty editor, on the proper use of perfumes.

12 a. m. — Elizabeth Hart Presents (WMAQ): Mrs. Anna V. Zinsler, discussing work of Zonta International.

12:45 p. m. — American Woman's Jury (WGN): considers case of wife who must decide between her own happiness and a normal life for her child.

2:30 p. m. — Tales from Far and Near (WBBM): story of "Davy Crockett."

3:15 p. m. — Jack Berch Show (WENR): "Let a Smile Be Your Umbrella," "Song of India," "Always."

11:00 The Editor's Daughter—WMAQ
11:00 Kate Smith Speaks—WBBM
11:00 Eliza Jane—WTVL

11:00 Martha and Helen—WLS
11:00 Boake Carter—WGN WIBU
11:00 Gaita Gaita—WTVL

11:00 Today's Children—WTVL
11:00 Big Sister—WGN KMOX
11:00 Farm Hour—WIBU
11:00 Helen Frost—WBBM WCCO
11:00 Women in White—WMAQ
11:00 Our Gal Sunday—WBBM WCCO
11:00 Farm Hour—WIBU

12:00 Dinnertime—WLS
12:00 Grendel's—WTVL
12:00 Elizabeth—WTVL

12:00 Dinnertime—WLS
12:00 Grendel's—WTVL
12:00 Elizabeth—WTVL

12:00 Dinnertime—WLS
12:00 Grendel's—WTVL
12:00 Elizabeth—WTVL

12:00 Dinnertime—WLS
12:00 Grendel's—WTVL
12:00 Elizabeth—WTVL

12:00 Dinnertime—WLS
12:00 Grendel's—WTVL
12:00 Elizabeth—WTVL

12:00 Dinnertime—WLS
12:00 Grendel's—WTVL
12:00 Elizabeth—WTVL

12:00 Dinnertime—WLS
12:00 Grendel's—WTVL
12:00 Elizabeth—WTVL

12:00 Dinnertime—WLS
12:00 Grendel's—WTVL
12:00 Elizabeth—WTVL

12:00 Dinnertime—WLS
12:00 Grendel's—WTVL
12:00 Elizabeth—WTVL

12:00 Dinnertime—WLS
12:00 Grendel's—WTVL
12:00 Elizabeth—WTVL

12:00 Dinnertime—WLS
12:00 Grendel's—WTVL
12:00 Elizabeth—WTVL

12:00 Dinnertime—WLS
12:00 Grendel's—WTVL
12:00 Elizabeth—WTVL

12:00 Dinnertime—WLS
12:00 Grendel's—WTVL
12:00 Elizabeth—WTVL

12:00 Dinnertime—WLS
12:00 Grendel's—WTVL
12:00 Elizabeth—WTVL

12:00 Dinnertime—WLS
12:00 Grendel's—WTVL
12:00 Elizabeth—WTVL

12:00 Dinnertime—WLS
12:00 Grendel's—WTVL
12:00 Elizabeth—WTVL

12:00 Dinnertime—WLS
12:00 Grendel's—WTVL
12:00 Elizabeth—WTVL

12:00 Dinnertime—WLS
12:00 Grendel's—WTVL
12:00 Elizabeth—WTVL

12:00 Dinnertime—WLS
12:00 Grendel's—WTVL
12:00 Elizabeth—WTVL

12:00 Dinnertime—WLS
12:00 Grendel's—WTVL
12:00 Elizabeth—WTVL

12:00 Dinnertime—WLS
12:00 Grendel's—WTVL
12:00 Elizabeth—WTVL

12:00 Dinnertime—WLS
12:00 Grendel's—WTVL
12:00 Elizabeth—WTVL

12:00 Dinnertime—WLS
12:00 Grendel's—WTVL
12:00 Elizabeth—WTVL

12:00 Dinnertime—WLS
12:00 Grendel's—WTVL
12:00 Elizabeth—WTVL

12:00 Dinnertime—WLS
12:00 Grendel's—WTVL
12:00 Elizabeth—WTVL

12:00 Dinnertime—WLS
12:00 Grendel's—WTVL
12:00 Elizabeth—WTVL

11:00 The Editor's Daughter—WMAQ
11:00 Kate Smith Speaks—WBBM
11:00 Eliza Jane—WTVL

11:00 Martha and Helen—WLS
11:00 Boake Carter—WGN WIBU
11:00 Gaita Gaita—WTVL

11:00 Today's Children—WTVL
11:00 Big Sister—WGN KMOX
11:00 Farm Hour—WIBU
11:00 Helen Frost—WBBM WCCO
11:00 Women in White—WMAQ
11:00 Our Gal Sunday—WBBM WCCO
11:00 Farm Hour—WIBU

12:00 Dinnertime—WLS
12:00 Grendel's—WTVL
12:00 Elizabeth—WTVL

12:00 Dinnertime—WLS
12:00 Grendel's—WTVL
12:00 Elizabeth—WTVL

12:00 Dinnertime—WLS
12:00 Grendel's—WTVL
12:00 Elizabeth—WTVL

12:00 Dinnertime—WLS
12:00 Grendel's—WTVL
12:00 Elizabeth—WTVL

12:00 Dinnertime—WLS
12:00 Grendel's—WTVL
12:00 Elizabeth—WTVL

12:00 Dinnertime—WLS
12:00 Grendel's—WTVL
12:00 Elizabeth—WTVL

12:00 Dinnertime—WLS
12:00 Grendel's—WTVL
12:00 Elizabeth—WTVL

12:00 Dinnertime—WLS
12:00 Grendel's—WTVL
12:00 Elizabeth—WTVL

12:00 Dinnertime—WLS
12:00 Grendel's—WTVL
12:00 Elizabeth—WTVL

12:00 Dinnertime—WLS
12:00 Grendel's—WTVL
12:00 Elizabeth—WTVL

12:00 Dinnertime—WLS
12:00 Grendel's—WTVL
12:00 Elizabeth—WTVL

12:00 Dinnertime—WLS
12:00 Grendel's—WTVL
12:00 Elizabeth—WTVL

12:00 Dinnertime—WLS
12:00 Grendel's—WTVL
12:00 Elizabeth—WTVL

12:00 Dinnertime—WLS
12:00 Grendel's—WTVL
12:00 Elizabeth—WTVL

12:00 Dinnertime—WLS
12:00 Grendel's—WTVL
12:00 Elizabeth—WTVL

12:00 Dinnertime—WLS
12:00 Grendel's—WTVL
12:00 Elizabeth—WTVL

12:00 Dinnertime—WLS
12:00 Grendel's—WTVL
12:00 Elizabeth—WTVL

12:00 Dinnertime—WLS
12:00 Grendel's—WTVL
12:00 Elizabeth—WTVL

12:00 Dinnertime—WLS
12:00 Grendel's—WTVL
12:00 Elizabeth—WTVL

12:00 Dinnertime—WLS
12:00 Grendel's—WTVL
12:00 Elizabeth—WTVL

12:00 Dinnertime—WLS
12:00 Grendel's—WTVL
12:00 Elizabeth—WTVL

12:00 Dinnertime—WLS
12:00 Grendel's—WTVL
12:00 Elizabeth—WTVL

12:00 Dinnertime—WLS
12:00 Grendel's—WTVL
12:00 Elizabeth—WTVL

12:00 Dinnertime—WLS
12:00 Grendel's—WTVL
12:00 Elizabeth—WTVL

12:00 Dinnertime—WLS
12:00 Grendel's—WTVL
12:00 Elizabeth—WTVL

12:00 Dinnertime—WLS
12:00 Grendel's—WTVL
12:00 Elizabeth—WTVL

12:00 Dinnertime—WLS
12:00 Grendel's—WTVL
12:00 Elizabeth—WTVL

12:00 Dinnertime—WLS
12:00 Grendel's—WTVL
12:00 Elizabeth—WTVL

12:00 Dinnertime—WLS
12:00 Grendel's—WTVL
12:00 Elizabeth—WTVL

12:00 Dinnertime—WLS
12:00 Grendel's—WTVL
12:00 Elizabeth—WTVL

12:00 Dinnertime—WLS
12:00 Grendel's—WTVL
12:00 Elizabeth—WTVL

12:00 Dinnertime—WLS
12:00 Grendel's—WTVL
12:00 Elizabeth—WTVL

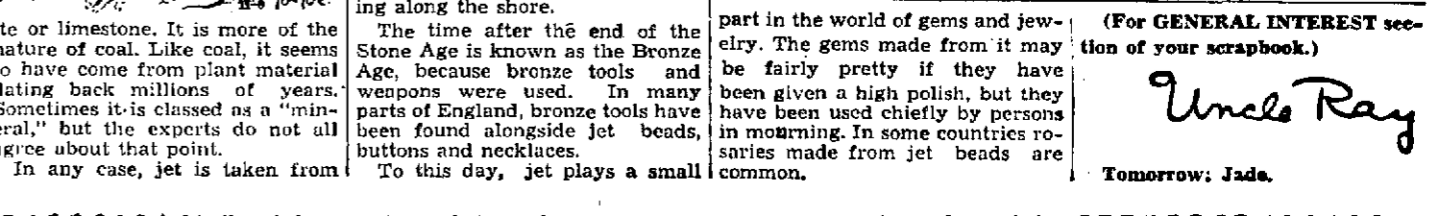
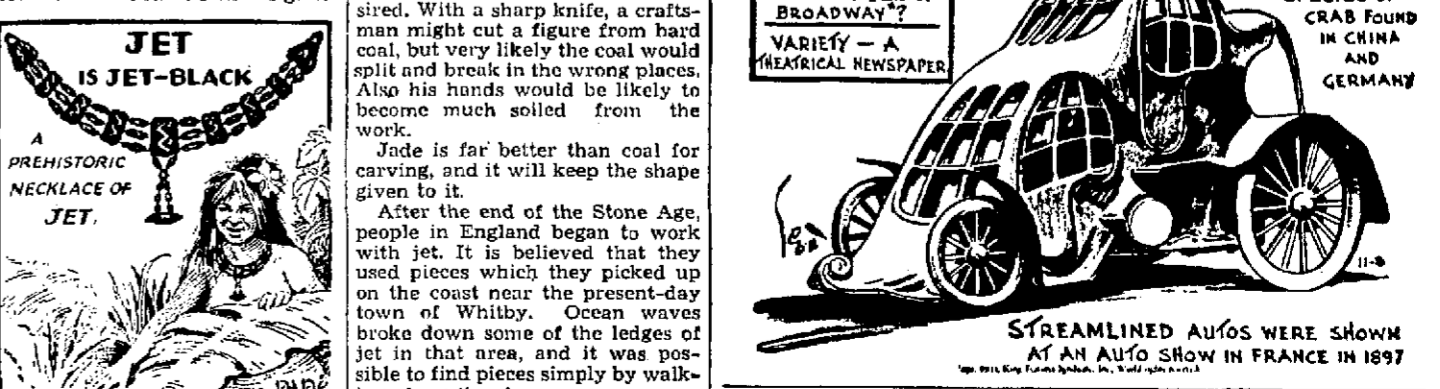
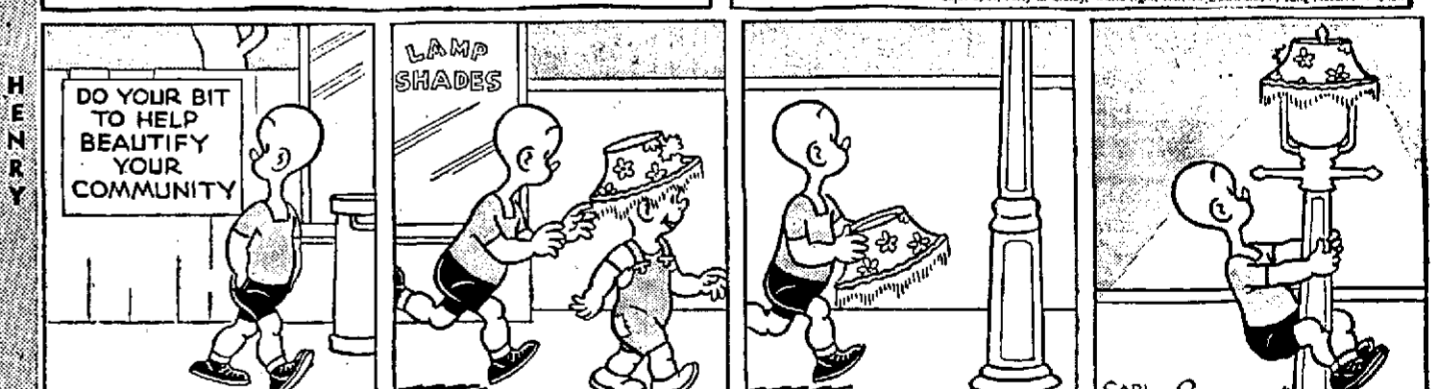
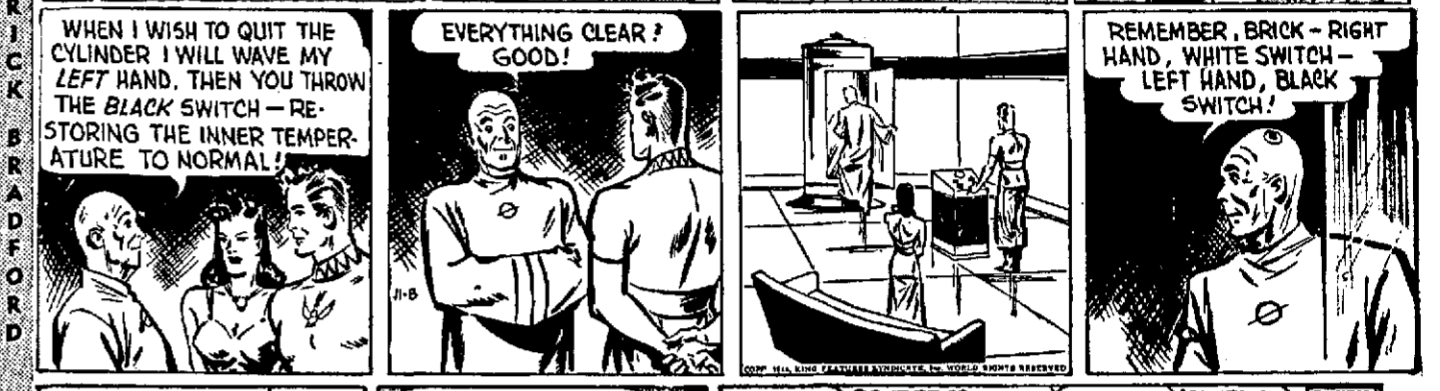
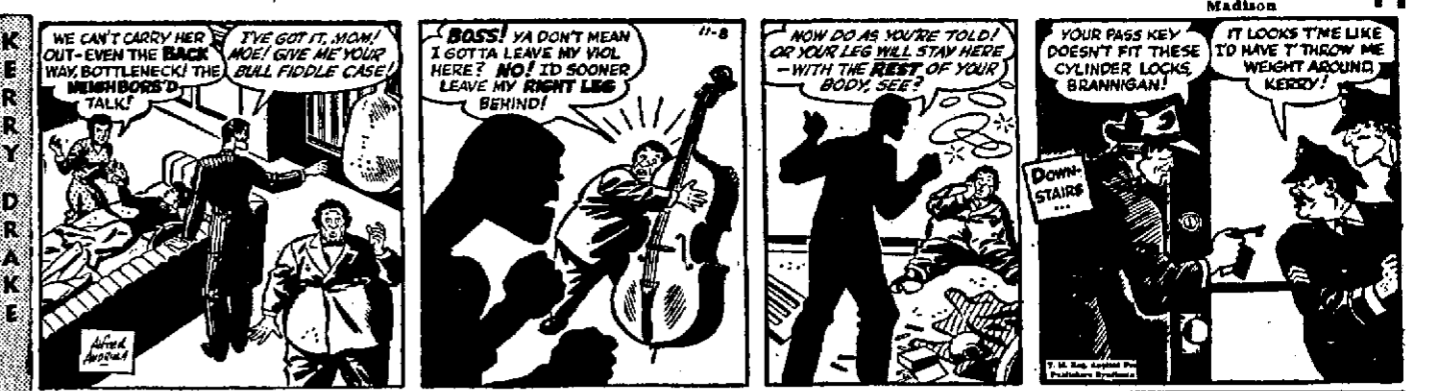
12:00 Dinnertime—WLS
12:00 Grendel's—WTVL
12:00 Elizabeth—WTVL

12:00 Dinnertime—WLS
12:00 Grendel's—WTVL
12:00 Elizabeth—WTVL

12:00 Dinnertime—WLS
12:00 Grendel's—WTVL
12:00 Elizabeth—WTVL

12:00 Dinnertime—WLS
12:00 Grendel's—WTVL
12:00 Elizabeth—WTVL

12:00 Dinnertime—WLS
12:00 Grendel's—WTVL
12:00 Elizabeth—WTVL



Bids Open for Sale of Goods at Truax

The purchasing and contracting officer of Truax Field will receive sealed bids for more than 35 items used unserviceable for army use up to 10 a. m. Wednesday, Nov. 15, the field's commissary today.

Rotary Speaker Favors U.S.-Mexico Interchange

Interchange of students and tourist trade are "important factors" in increasing understanding between the United States and Mexico, the Kiwanis club was told Monday by Dr. A. B. Keeler, Mexico City, former assistant director of the American School foundation.

Buth Returns to U. S. After 64 Missions

SULLIVAN—Tech. Sgt. James H. Buth, 22, Sullivan, has arrived at Miami Beach, Fla., for re-assignment, following 64 missions as an armorer and gunner during 12 months in Africa and Sardinia. He is the son of William C. Buth, Sullivan.

41 KILLED IN WRECK

SAN JUAN, Puerto Rico (U.P.)—Forty-one persons were killed Monday night in a train wreck near Aguadilla, first reports from the scene said Tuesday.

DO YOUR BIT TO HELP BEAUTIFY YOUR COMMUNITY



Uncle Ray's Corner

Jet Beads Date Back to Bronze Age in England
When people want to tell how black something is, they may say "as black as coal" or "as black as the Ace of Spades." We also have the expression "jet-black," and when anything is as black as jet, it is dark, indeed.

SCOTT'S SCRAP BOOK

Jet differs from coal in the fact that it is harder, and because it can be carved into a shape desired. With a sharp knife, a craftsman might cut a figure from hard coal, but very likely the coal would split and break in the wrong places. Also his hands would be likely to become much soiled from the work.

Advertisement for Uncle Ray's Scrap Book, featuring a car and text about jet beads and scrapbooking.

Advertisement for Uncle Ray's Scrap Book, featuring a car and text about jet beads and scrapbooking.