

Nevi Shure's Novel Aired On 'Words At War' Tuesday

The personal problems of love and marriage in wartime is the theme of "Words at War," Tuesday at 9:30 p. m. EWT, over WEAF, when an adaptation of Nevi Shure's novel "Pastoral" will be presented. Neal Hopkins wrote the radio version and Anton Leader will direct. Morris Mamorsky has composed musical backgrounds and will conduct orchestra.

The dramatic story of a doctor on Coast Guard cutter on convoy duty will be enacted by a cast headed by Raymond Massey, when "The Doctor Fights" presents "Balm of Gilead," Tuesday at 9:30 p. m., over Station WABC. Guest speaker on the program will be Dr. Ernst Irons, president of the American College of Physicians.

Havana is the setting for an outbreak of murder, with suspects being culled from a motley crew of refugees, smugglers and expatriates, in Cornelius Tilman's "Murder in Havana" on WEAF's "Mystery Theatre" Tuesday at 9 p. m., EWT.

Andy Talbot, American engineer who has been doing work vital to the United Nations war effort, finds a murdered man in his room and then discovers that his secret papers have been photographed. A second murder further compli-

TUESDAY, AUGUST 15
6:45—Front Page Farrell Serial—nbc
Wilderness Road Serial—nbc
The Sea Hound Sketch—bin-east
The Tracy with repeat—other bin
Serial Serials for 15 Min—nbc
6:00—News Report for 15 Min—nbc
6:30—Home and News Time—cbs
Hop Harrigan, Serial—bin-east
Repeat of the Terry Serial—other bin
6:35—Comment on the War—mbs
6:40—American Serenade, Sports—nbc
6:45—Commentary—cbs
6:50—Cliff Hanger—bin-east
6:55—Cliff Hanger—bin-east
7:00—Cliff Hanger—bin-east
7:05—Cliff Hanger—bin-east
7:10—Cliff Hanger—bin-east
7:15—Cliff Hanger—bin-east
7:20—Cliff Hanger—bin-east
7:25—Cliff Hanger—bin-east
7:30—Cliff Hanger—bin-east
7:35—Cliff Hanger—bin-east
7:40—Cliff Hanger—bin-east
7:45—Cliff Hanger—bin-east
7:50—Cliff Hanger—bin-east
7:55—Cliff Hanger—bin-east
8:00—Cliff Hanger—bin-east
8:05—Cliff Hanger—bin-east
8:10—Cliff Hanger—bin-east
8:15—Cliff Hanger—bin-east
8:20—Cliff Hanger—bin-east
8:25—Cliff Hanger—bin-east
8:30—Cliff Hanger—bin-east
8:35—Cliff Hanger—bin-east
8:40—Cliff Hanger—bin-east
8:45—Cliff Hanger—bin-east
8:50—Cliff Hanger—bin-east
8:55—Cliff Hanger—bin-east
9:00—Cliff Hanger—bin-east

TAX COLLECTION ON BANK GOODS ASKED

COLUMBUS, Aug. 15—(UP)—David Keating, Columbus attorney, today has brought suit against State Tax Commissioner William S. Ewalt to compel him to collect state sales tax on supplies purchased by the federal government for use in the liquidation of national banks. Keating claimed that such sales under the state law are subject to the tax and asked the Franklin common pleas court to order the collection of all such taxes since 1935 when the tax was enacted.

Theatre Guide

OHIO—"Days of Glory."
QUILNA—"Take It Or Leave It" and "She's A Soldier Too."
SIGMA—"Double Indemnity" and "Jimmie Steps Out."
STATE—"Gaslight" and "Henry Aldrich Plays Cupid."
LYRIC—"Cowboy Canteen" and "Three Musketeers."
DRIVE-IN—"Thank Your Lucky Stars."
COMING UP
OHIO—"Bathing Beauties" due Friday.
QUILNA—"Man From Frisco" and "Sing, Neighbor, Sing" coming Friday.
SIGMA—"Madame X" and "Trans-Atlantic Tunnel" start Wednesday.
STATE—"And the Angels Sing" and "Gildersleeves Ghost" open Thursday.
LYRIC—"Marshall of Gunsmoke" and "Racket Man" begin Thursday.
DRIVE-IN—"Young in Heart" commence Wednesday.

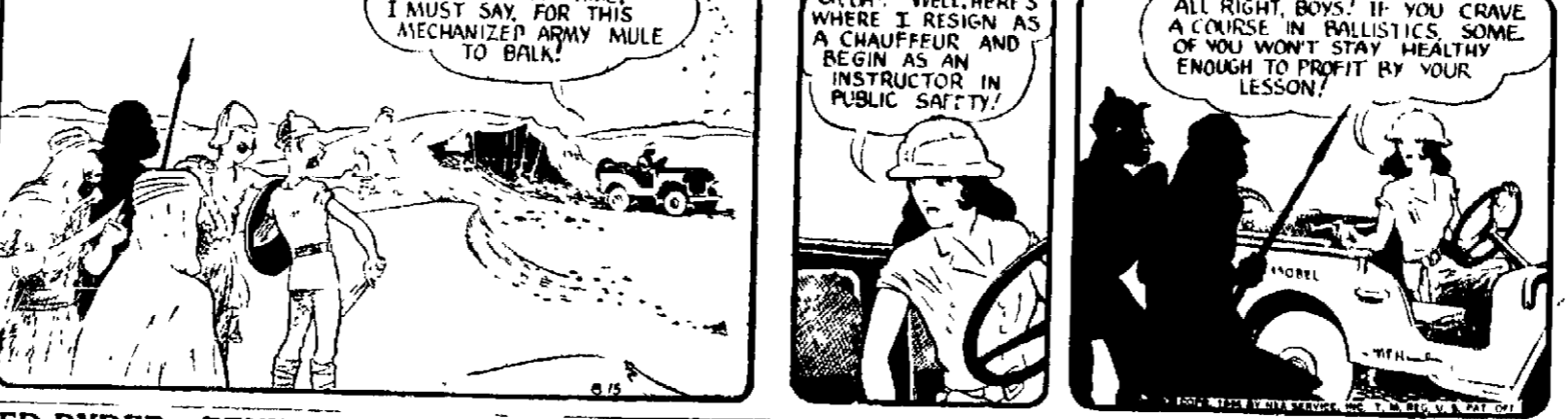
BOOTS AND HER BUDDIES—WHO ELSE?



WASH TUBBS—AFTER A NIGHT'S WORK



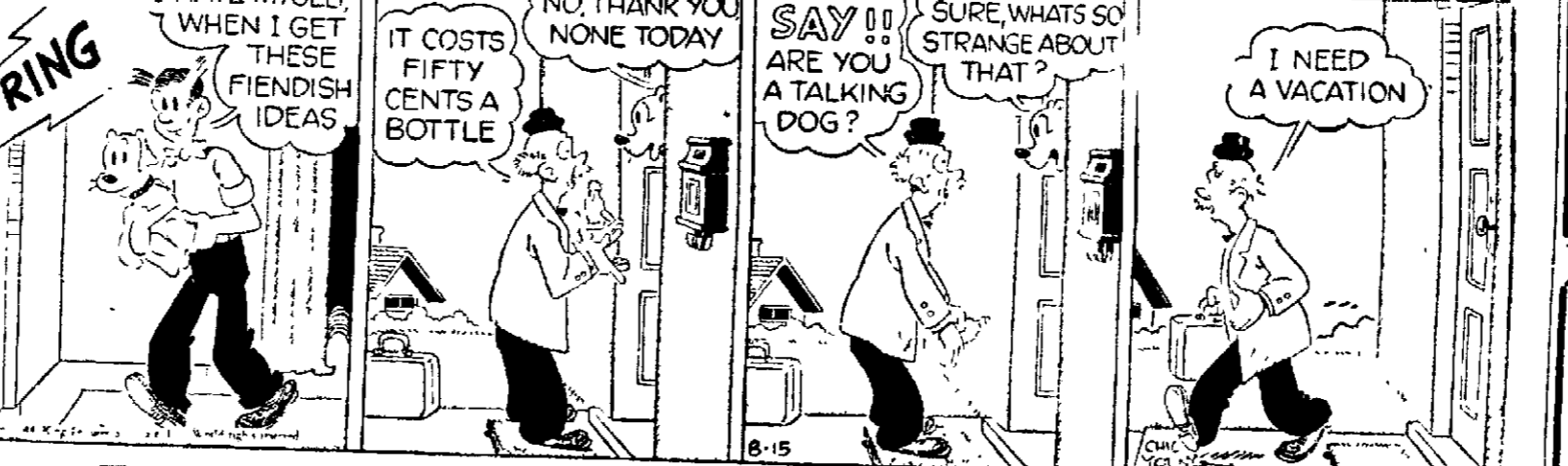
ALLEY OOP—SHE MEANS "STAND BACK"



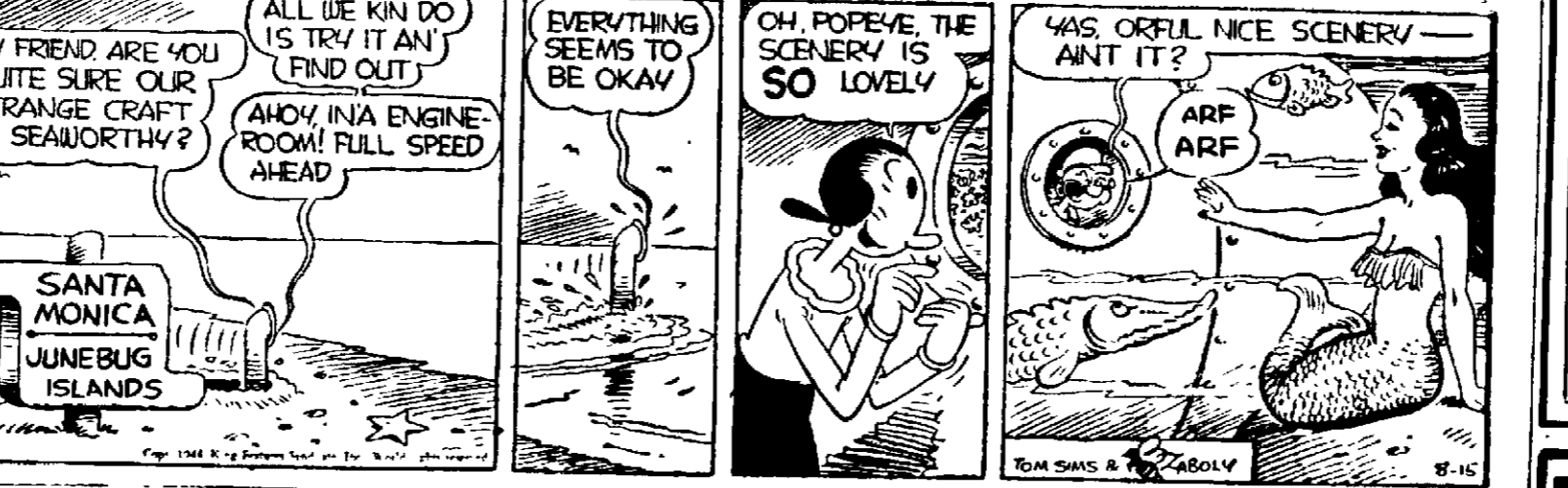
RED RYDER—BENEFIT IS FOR ARNO



BLONDIE—IT ISN'T THE HEAT—IT'S THE HUMIDITY!



POPEYE—FISHERMAN'S PARADISE



TWINS BROUGHT INTO WORLD BY PATROLMAN

PHILADELPHIA, Aug. 15—(AP)—Patrolman Edward Cushman beat five doctors in a race to the home of Mrs. Mary Ruppert, 30, this morning, and when the first doctor arrived Cushman told him—"it's twins."
The police and doctors were called just before 11 o'clock. Cushman was on hand when the first of the twin girls, Arlene, arrived at 11:02. Shirley was born at 11:45. Dr. H. M. Koshman, next on the scene, pronounced mother and daughters well.

NO NEED TO WASTE PRECIOUS GASOLINE
You'll have a better time here!
HOTEL WALDO Rathskeller

She's a Soldier Too
THEY'RE OUT THAT BOARDING-HOUSE REAR... THAT REAGLES INTO THE HEART OF AMERICA!
PHIL BAKER and the greatest array of stars in
TAKE IT OR LEAVE IT
ALSO—
THEY'RE OUT THAT BOARDING-HOUSE REAR... THAT REAGLES INTO THE HEART OF AMERICA!
25c Till 6 P. M. 30c After 6 P. M. TODAY
LYRIC
A canteen full of rooin' tootin' shootin' fun!
CHARLES STARNETT
JANE FRAZEE
VERA VASER
TEX BITTER
GUYTON DE WILLIAMS
THE HILLS BROTHERS
HUNNY HANLEY
AND HIS SHARLEY PALS
BUCK, CHUCKIE AND BOBBY
THE THORO BROTHERS
AND
THE RITZ BROTHERS in
THREE MUSKETEERS
ALSO—GREAT ALASKAN MYSTERY
MOONLIGHT TERRACE
Sandy Beach Park
RUSSELL'S POINT, OHIO
TOMORROW NIGHT ONLY
FRANKIE CARLE
AND HIS ORCHESTRA
7:30 P. M. To 1:30
Dancing in Enclosed Ballroom in Case of Rain

Guerrilla Fighters Save Moscow In Ohio Picture

Well-hidden is the retreat of the Russian guerrillas. The collar of a bomb-shattered monastery inside the Nazi lines near Moscow is the setting for most of the action of "Days of Glory," opening at the Ohio theatre and starring two screen newcomers, Tamara Toumanova and Gregory Peck. Don't miss "Days of Glory."

Depicting how hard it is to get a room in any town where there is a war boom is the picture "She's A Soldier Too" currently featured at the Quina theatre. Sharing the billing is "Take It Or Leave It."

Many people have conceived the idea of a trans-Atlantic tunnel but the government apparently decided that a project of this sort would be highly impractical. Yet, enemies of this country would do anything to conquer a land such as ours and seem to think a trans-Atlantic tunnel would be all right. See "Trans-Atlantic Tunnel" opening Wednesday at the Sigma theatre where it is playing on the same bill with "Madame X."

Charles Boyer proves himself as good at being a villain as a lover in "Gaslight" now showing at the State theatre. Boyer is co-starred with Ingrid Bergman, who plays wife and Joseph Cotten, who represents Scotland Yard.

All soldiers are welcomed at the "Cowboy Canteen." Every one who wants to see what the inside of a canteen looks like will only have to go as far as the Lyric theatre to see it.

A little group of guerrilla fighters within the Nazi lines made possible the great Russian counter-attack that hurled the invaders from the gates of Moscow—according to the happenings of a remarkable Hollywood film—the romantic action drama, "Days of Glory."

OHIO NOW! Mat. 45c
DAYS OF GLORY
He teaches her to hate and kill... she teaches him to love!
A CASEY ROBINSON production
Introducing
A Cast of New Personalities
Starring
TOUMANOVA
GREGORY PECK
with
ALAN BIRD - MARIA PALMER
LOWELL GILMORE
Plus:
Color Cartoon Novelty
World News
FRI. "BATHING BEAUTIES" IN COLOR

ENDS TONITE "DOUBLE INDEMNITY" — Also "JIMMY STEPS OUT"

SIGMA TOMORROW!

The Story That Can Be Told Now
DELINQUENT DAUGHTERS
With
Jane Carlson—Judy Gibson

You Asked To See This Spectacle Again!
RICHARD DIX -- WALTER HUSTON
IN
"TRANSATLANTIC TUNNEL"

STATE
NOW 25c Till 6 30c After 6

BAILEY BROS. CIRCUS
BELLEFONTAINE AVENUE SHOW GROUNDS
Lima — One Day Only
SAT. AUG. 19
2 PERFORMANCES
AFTERNOON AND NIGHT
2:15 P. M. 8 P. M.
PRESENTING
The Glamorous, Gorgeous
Never To Be Forgotten
Spectacle
"THE FALL OF TOKYO"
City of Tents—100 Wild and Domestic Animals—200 Artists
—60 Clowns — Elephants, etc.
Roman Hippodrome, Wild West Arena and 2 Elevated Stages.
ONLY BIG SHOW COMING TO LIMA THIS YEAR
Hey Kids, Clip This Coupon—
COUPON
This Coupon and 50c will admit you and your friends to the big show. Regular price is 75c. Kids: 50c. Get this out and save 25c. Good afternoon or night.

LIMA DRIVE-IN THEATRE
2 MILES SOUTH OF U. S. 25
LAST TIMES TUES
"THANK YOUR LUCKY STARS"
Featuring
EDDIE CANTOR and
ALL STAR CAST
2 Shows Nightly
8:15 P. M. OR 6:45 P. M.
Adults 50c. Two Children, Children 25c. Groups Accompanied by Parents.
Use News Want Ads For Quick Results

OUR BOARDING HOUSE with MAJOR HOOPLE



PUT OUR WAY



EAT WELL TO DO YOUR BEST WORK
For Tasty Summer Food Try Our LUNCHES
WALDO GRILL
MARTIN'S ROADSIDE RESTAURANT
1 1/2 Miles N. on Findlay Rd.
TOO HOT TO COOK
Drive Out for
STEAKS—CHOPS
And DINNERS
Liquors, Wines and Beer
Open Till 2:30 a. m.