

(Programs listed in the Wisconsin State Journal are checked to the last possible moment. Changes may be made, however, at the discretion of stations and networks.)

What's on the Air

FREQUENCIES			
WIBA 1310	WCFL 1000	KMOX 1120	
WHA 970	WISN 1240	WGN 720	
WLW 700	WENR 890	WIND 560	
WBBM 780	WTMJ 670	WJJD 1160	
WCCO 830	WMAQ 620	WLS 890	

Tonight's Aces

Discussion

8:45 p. m. — James E. Watson (WIND): octogenarian Hoosier political leader summarizes GOP convention.

Drama

6:15 p. m. — Dateline (WBBM): preparations for GOP convention, 7 p. m. — Cavalcade of America (WIBA): "What Price Freedom," with Herbert Marshall as Robert Morris; talk by Secretary of the Treasury Henry Morgenthau, Jr. 7:30 p. m. — Sherlock Holmes (WGN): Basil Rathbone in "The Adventure of the Dissimilar Body."



Special Events

9 p. m. — Republican Convention (WMAQ): Gov. Earl Warren of California, keynote.

Variety

8:30 p. m. — It's the McCoy (WIBU): new series; Majors and Minors, Pvt. Frances Koskey, Pvt. Bill Steiner, Corp. Gene Jacobs.

Quiz

8:30 p. m. — Information Please (WIBA): Jan Struther, Donald Culross Peattie, John Kieran, Franklin P. Adams, Clifton Fadiman.

Music

7:30 p. m. — Concert (WIBA): Gladys Swarthout, Howard Barlow orchestra; "Connals-to-le Pays," "Kiss Me Again," "One Night of Love." Gay Nineties (WBBM): "Just One Girl," "Don't Wake Me Up, I'm Dreaming," "I Love You Truly," "Message of the Violet."

8 p. m. — Great Artists (WIBA): Marian Anderson, Donald Voorhees orchestra; "Aldelia" (Mozart), "My Way's Country," "Hard Trials," "Londonderry Air," "Air de Lia."

8:30 p. m. — Spotlight Bands (WENR): Tommy Tucker.

OTHER STATIONS TONIGHT

5:00 Terry and the Pirates—WENR	8:15 Today's American Hero—WIBU
5:15 GOP Convention—WMAQ	8:15 Screen Test—WGN
5:15 Safety Legion Time—WGN	8:30 Information Please—WMAQ
5:15 Lyn Murray and Orch.—WBBM	8:30 It's the McCoy—WIBU
5:15 NBC News Special—WIBU	8:30 Spotlight Bands—WENR
5:15 Malcolm Clair—WENR	8:45 GOP Convention—WBBM
5:30 Tom Mix—WIBU WGN	8:55 Storyteller—WENR
5:30 Jack Armstrong—WENR	9:00 WBBM
5:30 Superman—WGN	9:15 Ted Malone—WENR
5:45 The Sea Hound—WENR	9:30 Horace Hold—WENR
6:00 Music Show—WTMJ	9:30 Budget Convention—WGN
6:00 Fulton Lewis, Jr.—WIBU	10:00 Music Show—WMAQ
6:00 Jim Blady—WMAQ	10:00 Radio Newsreel—WIBU
6:15 Dateline—WCCO WBBM	10:00 Fulton Lewis, Jr.—WGN
6:15 Lum and Abner—WIBU	10:15 So the Story Goes—WBBM
6:30 Supper—NBC WBBM WMAQ	10:15 Veve—WBBM
6:30 The Lone Ranger—WIBU	10:15 Jimmy Fidler—WTMJ
6:30 Arkansas Traveler—WBBM	10:15 The Story Goes—WBBM
6:45 The Great Gilday—WBBM	10:30 Treasury Salute—WENR
6:45 H. V. Kaltenborn—WMAQ	10:45 Rumpus Room—WTMJ
7:00 Cavalcade—WMAQ WTJ	11:05 Music by Warrington—WBBM
7:00 Vox Pop—WBBM WCCO KMOX	11:10 Clute Foster Orch.—WGN
7:15 Lum and Abner—WLS	11:15 One for the Books—WMAQ
7:15 Your Reporter—WIBU	11:30 Eddie Oliver Orch.—WENR
7:20 Concert—WMAQ	11:30 Goldworthy's Orch.—WBBM
7:30 Sherlock Holmes—WGN	11:30 Stories of Escape—WMAQ
7:30 Gay Nineties Revue—WBBM	12:00 Say It With Music—WENR
7:30 Blind Date—WLS	12:00 Nite Watch (to 8)—WIND
7:30 Countess—WENR	12:00 Countess—WENR
8:00 Gabriel Heatter—WGN WIBU	12:05 Promenade Concert—WMAQ
8:00 Radio Theater—WBBM WCCO	12:05 Ray Benson Orch.—WBBM
8:00 Great Artists—WTMJ WMAQ	1:00 News, Rhythm (to 2:10)—WBBM

OTHER STATIONS TUESDAY

—MORNING—	
6:00 Farm News—WLS	8:00 Corwin—WBBM WCCO
6:00 Top of the Morning—WEMJ	8:00 GOP Convention—WMAQ WENR
6:15 Everett Mitchell—WMAQ	8:30 Halls of Montezuma—WIBU
6:15 Morning Devotions—WLS	8:30 Crime Files of Flanagan—WGN
6:30 Variety Farmers—WLS	8:30 Congress Speaks—WBBM
6:30 Patsy and Her Guitar	8:30 Special Quarter Program—WIBU
6:30 NBC World News	8:30 Fulton Lewis, Jr.—WGN
6:30 NBC News Edition	8:30 Love a Mystery—WBBM
6:30 NBC News Edition	8:30 Everything for the Boys—WMAQ
6:30 NBC News Edition	8:30 King's Jester & Jambette—WBBM
6:30 NBC News Edition	8:30 Simonetta—WIBU
6:30 NBC News Edition	8:30 Salute to Victory—WBBM
6:30 NBC News Edition	8:30 Rumpus Room—WTMJ
6:30 NBC News Edition	8:30 Sweet Home—WBBM
6:30 NBC News Edition	8:30 Carmen Cavallaro Orch.—WGN
6:30 NBC News Edition	8:30 Gay Claridge Orch.—WENR
6:30 NBC News Edition	8:30 Don Reid Orch.—WGN
6:30 NBC News Edition	8:30 Jimmie Hilliard Orch.—WBBM
6:30 NBC News Edition	8:30 Eddie Oliver Orch.—WENR
6:30 NBC News Edition	8:30 Roy Shield Orch.—WMAQ
6:30 NBC News Edition	8:30 Concert by Night—WENR
6:30 NBC News Edition	8:30 Nite Watch (to 8)—WIND
6:30 NBC News Edition	8:30 Promenade—WMAQ
6:30 NBC News Edition	8:30 Henri Gendron Orch.—WBBM
6:30 NBC News Edition	8:30 Promenade Concert—WMAQ
6:30 NBC News Edition	8:30 Al Trace Orch.—WGN
6:30 NBC News Edition	8:30 Bill Snyder Orch.—WBBM
6:30 NBC News Edition	8:30 Woolly Herman Orch.—WENR
6:30 NBC News Edition	8:30 Eddie Ashman Orch.—WGN
6:30 NBC News Edition	8:30 News and Music (to 2:10)—WBBM

Tuesdaytime

12 m. — Republican Convention (WMAQ): Rep. Joseph W. Martin, Jr. 5:15 p. m. — Republican Convention (WIBA): summary and interviews.

WIBA TONIGHT

5:15 NBC Republican Convention	8:30 NBC Information Please
5:30 News Edition	9:00 Truax Field Calling
5:45 Sports Parade	9:15 NBC News Edition
5:55 News Report	9:45 Treasury Song
6:00 NBC Music Show	10:00 Night News Edition
6:15 NBC News of the World	10:15 Blue Raymond Gram Swing
6:30 Dinner Melody	10:30 To Be Announced
6:45 NBC H. V. Kaltenborn	11:00 NBC News Report
7:00 NBC Cavalcade of America	11:05 Masterworks
7:15 NBC Concert	11:15 NBC Stars Trio
8:00 NBC Great Artists	11:45 NBC Lec. Sims, Pianist
	11:55 NBC News Report

WIBA TUESDAY

—MORNING—	
6:00 Morning Variety	1:45 Jan Loring
6:30 News Report	2:00 NBC A Woman of America
6:30 NBC News Edition	2:15 NBC Ma Perkins—WBBM
6:45 Patsy and Her Guitar	2:30 Music of the Day
7:00 NBC World News	2:45 NBC Night to Happiness
7:15 Trading Post	3:00 NBC Backstage With
7:25 Intertitle	3:15 NBC Stella Dallas
7:30 State Journal News Edition	3:30 NBC Lorenzo Jones
7:30 Musical Clock	3:45 NBC Young Wilder Brown
8:30 Contests	4:00 Campus Jamboree
8:45 Shopping Guide	4:45 WBA Rangers
9:00 The Gospel Twins	
9:15 Program Review	
9:30 Melody in Spanish	
9:45 Lutheran Gospel Hour	
10:00 NBC Road of Life	
10:15 Music of the Day	
10:30 News	
10:40 Intertitle	
10:45 NBC David Harum	
11:00 Linda's First Love	
11:15 Mary Foster	
11:30 Farm Roundup	
—AFTERNOON—	
12:00 News Report	10:00 Night News Edition
12:05 Farm Roundup	10:15 Blue Raymond Gram Swing
12:15 Farm Service	10:30 Treasury Salute
12:30 Noon News Edition	10:45 Serenade
12:30 Intertitle	11:00 NBC News Report
1:00 NBC Guiding Light	11:05 Masterworks
1:15 NBC Today's Children	11:30 NBC Roy Shield Orch.
1:30 NBC Women in White	11:55 NBC News Report

WHA TUESDAY

—Morning—	
7:30 Band Wagon	Jawling Gets, George Briggs; Pasturing Sheep at University Farm, Burlington
7:45 Morning News	1:00 Chapter a Day
7:55 Program Review	1:30 Organ Melodies
8:00 Music You Want	2:00 Following Congress
8:30 Fun Time	2:30 Music of the Masters
8:55 News and Views	3:00 Reading for Wartime
9:00 The British Empire	4:00 Russian Music Program
9:30 Weather: Eric Miller	4:30 Stuba, Our Ally
9:57 Homemakers' Program: Conserve and Like It	4:45 Treasury Salute
10:00 Homemakers' Program: Conserve and Like It	
10:30 Musical Moments	
10:45 From Fighting Badgers	
11:00 Music Appreciation: Prof. Leland Coon	
11:00 Noon Musicals	
—AFTERNOON—	
12:20 Noon News	
12:30 Farm Program: Weeds that Fal-	

Shea, Milwaukee, Heads State Bar

Glazier Re-elected Secretary-Treasurer

MILWAUKEE — Edmund B. Shea, Milwaukee, took over the office of president of the Wisconsin Bar Assn. at its convention here Friday and Quincy H. Hale, Le Cross, was elected president of that body for 1945. Gilson Glazier, Madison, state library librarian, was re-elected secretary-treasurer.

Pasteurizing Plant to Open

ELROY — A new pasteurizing plant will open in Elroy Saturday, when George Florin, Union Center, and Charles Heiking, Tomah, will start milk deliveries from their new plant in the Anderson building.

The new operators purchased the Sorenson dairy last week, and the Anderson building is being remodeled. New machinery and equipment will be installed. Milk will be purchased in the Elroy area, and deliveries will be made in Elroy and to stores in Union Center and Kendall.

MARKETS

TUESDAY	
11:30 WLS	12:00 WBBM
11:45 WLS	12:15 WIBU
	12:30 WGN
	12:45 WLS
	1:10 WLS

SPORTS REVIEWS

TONIGHT	
5:00 WIND WGN	6:45 WBBM
5:40 WMAQ	6:55 WMAQ WBBM
5:45 WGN	7:00 WBBM WCCO
6:00 WMAQ WIND	7:00 WIBU WIND
6:05 WBBM	7:05 WGN WBBM
6:15 WMAQ	7:10 WBBM WBBM
6:20 WIBU WGN	7:15 WGN WBBM
6:25 WMAQ WBBM	7:20 WBBM WBBM
6:30 WIBU WGN	7:25 WMAQ WBBM
6:35 WMAQ WBBM	7:30 WBBM WBBM
6:40 WBBM WCCO	7:35 WMAQ WBBM
6:45 WLS WIND	7:40 WBBM WBBM
6:50 WMAQ WBBM	7:45 WMAQ WBBM
6:55 WBBM WCCO	7:50 WBBM WBBM
7:00 WBBM WCCO	7:55 WBBM WBBM
7:05 WGN WBBM	8:00 WBBM WBBM
7:10 WBBM WBBM	8:05 WBBM WBBM
7:15 WGN WBBM	8:10 WBBM WBBM
7:20 WBBM WBBM	8:15 WBBM WBBM
7:25 WMAQ WBBM	8:20 WBBM WBBM
7:30 WBBM WBBM	8:25 WBBM WBBM
7:35 WMAQ WBBM	8:30 WBBM WBBM
7:40 WBBM WBBM	8:35 WBBM WBBM
7:45 WMAQ WBBM	8:40 WBBM WBBM
7:50 WBBM WBBM	8:45 WBBM WBBM
7:55 WBBM WBBM	8:50 WBBM WBBM
8:00 WBBM WBBM	8:55 WBBM WBBM
8:05 WBBM WBBM	9:00 WBBM WBBM
8:10 WBBM WBBM	9:05 WBBM WBBM
8:15 WBBM WBBM	9:10 WBBM WBBM
8:20 WBBM WBBM	9:15 WBBM WBBM
8:25 WBBM WBBM	9:20 WBBM WBBM
8:30 WBBM WBBM	9:25 WBBM WBBM
8:35 WBBM WBBM	9:30 WBBM WBBM
8:40 WBBM WBBM	9:35 WBBM WBBM
8:45 WBBM WBBM	9:40 WBBM WBBM
8:50 WBBM WBBM	9:45 WBBM WBBM
8:55 WBBM WBBM	9:50 WBBM WBBM
9:00 WBBM WBBM	9:55 WBBM WBBM
9:05 WBBM WBBM	10:00 WBBM WBBM
9:10 WBBM WBBM	10:05 WBBM WBBM
9:15 WBBM WBBM	10:10 WBBM WBBM
9:20 WBBM WBBM	10:15 WBBM WBBM
9:25 WBBM WBBM	10:20 WBBM WBBM
9:30 WBBM WBBM	10:25 WBBM WBBM
9:35 WBBM WBBM	10:30 WBBM WBBM
9:40 WBBM WBBM	10:35 WBBM WBBM
9:45 WBBM WBBM	10:40 WBBM WBBM
9:50 WBBM WBBM	10:45 WBBM WBBM
9:55 WBBM WBBM	10:50 WBBM WBBM
10:00 WBBM WBBM	10:55 WBBM WBBM
10:05 WBBM WBBM	11:00 WBBM WBBM
10:10 WBBM WBBM	11:05 WBBM WBBM
10:15 WBBM WBBM	11:10 WBBM WBBM
10:20 WBBM WBBM	11:15 WBBM WBBM
10:25 WBBM WBBM	11:20 WBBM WBBM
10:30 WBBM WBBM	11:25 WBBM WBBM
10:35 WBBM WBBM	11:30 WBBM WBBM
10:40 WBBM WBBM	11:35 WBBM WBBM
10:45 WBBM WBBM	11:40 WBBM WBBM
10:50 WBBM WBBM	11:45 WBBM WBBM
10:55 WBBM WBBM	11:50 WBBM WBBM
11:00 WBBM WBBM	11:55 WBBM WBBM

Uncle Ray's Corner

Peru's Capital City Gave Its Name to Large Beans

Along with many millions of other persons, I have a Victory garden again this year. Last year's "crop" was a good one for me, especially the potatoes and cucumbers. This year I am raising, or trying to raise, the following items:

String beans, pole beans, soy beans, Lima beans, peas, radishes, onions, tomatoes, cucumbers, carrots, beets, pumpkins, squashes, muskmelons and sweet corn—and a few others.

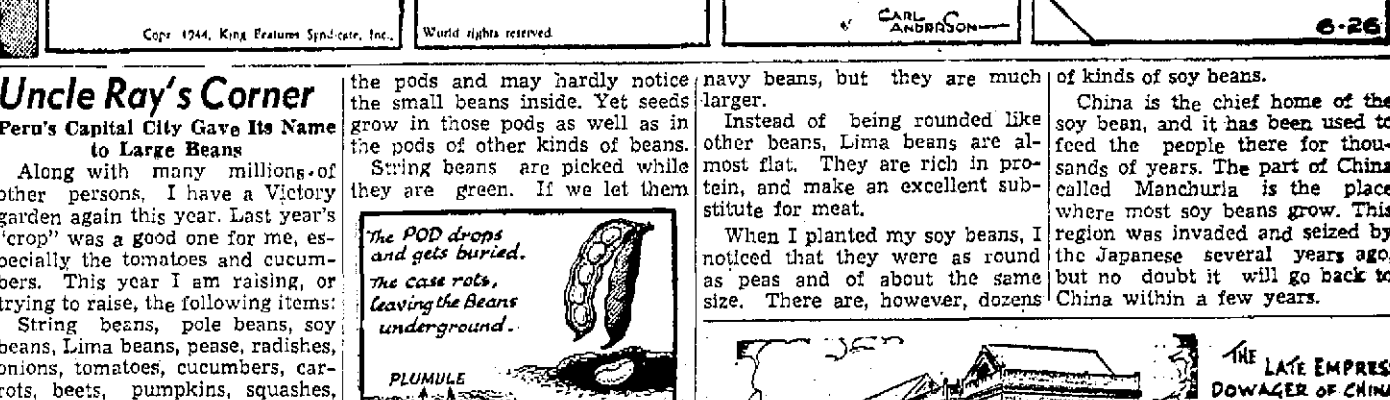
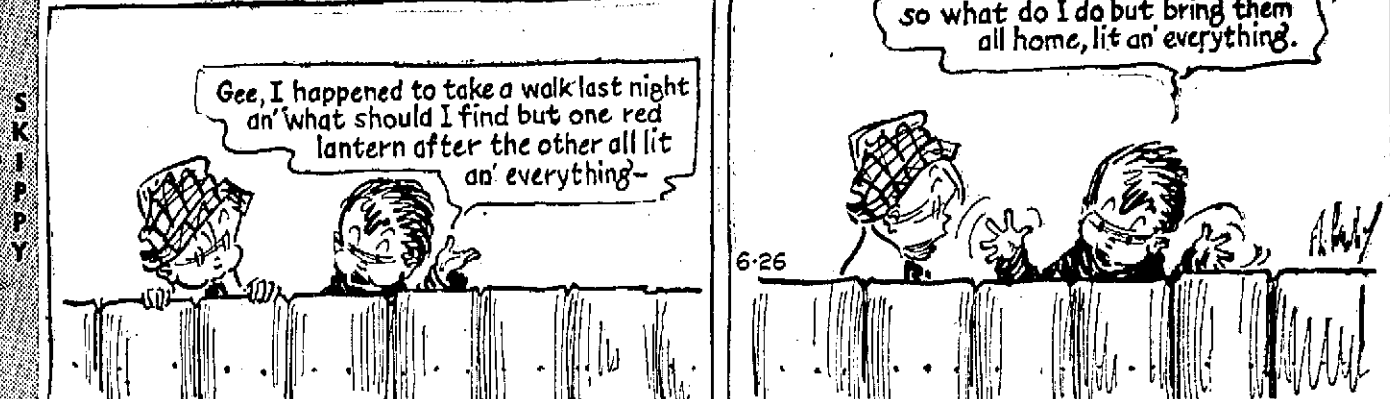
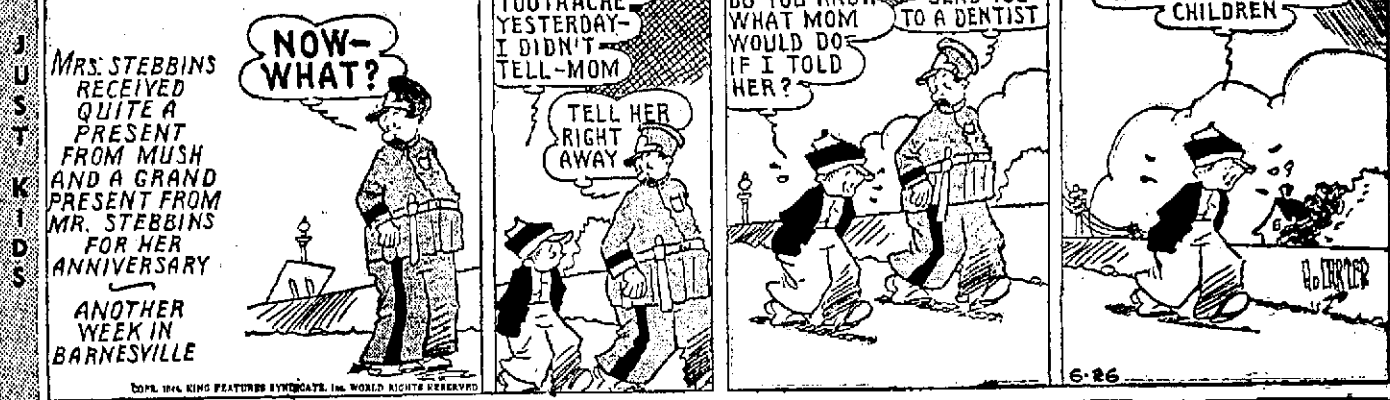
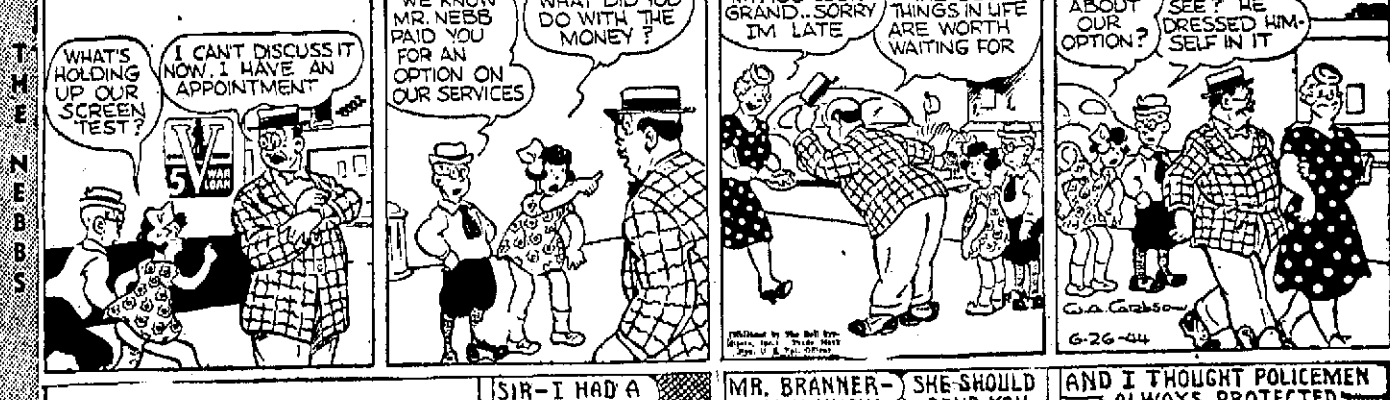
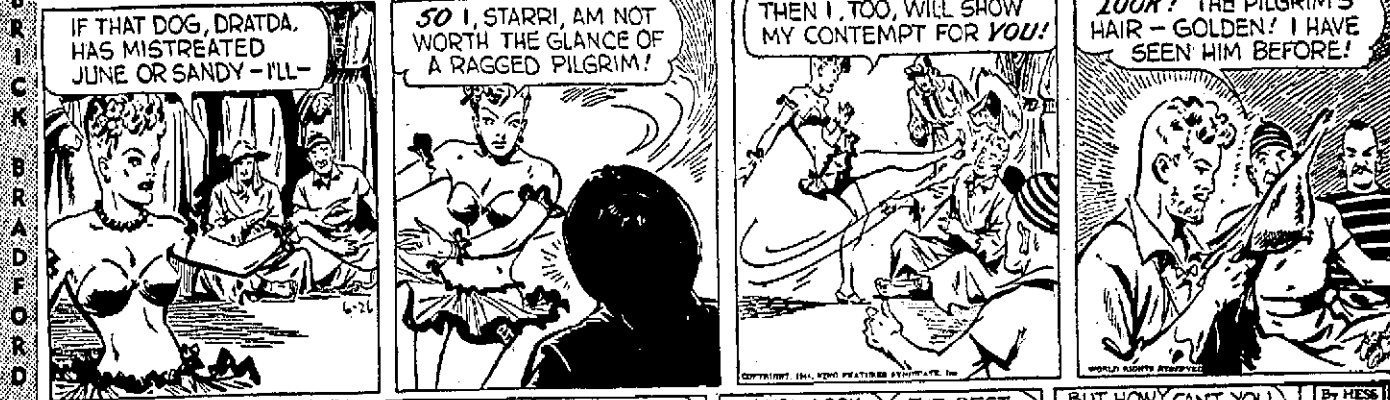
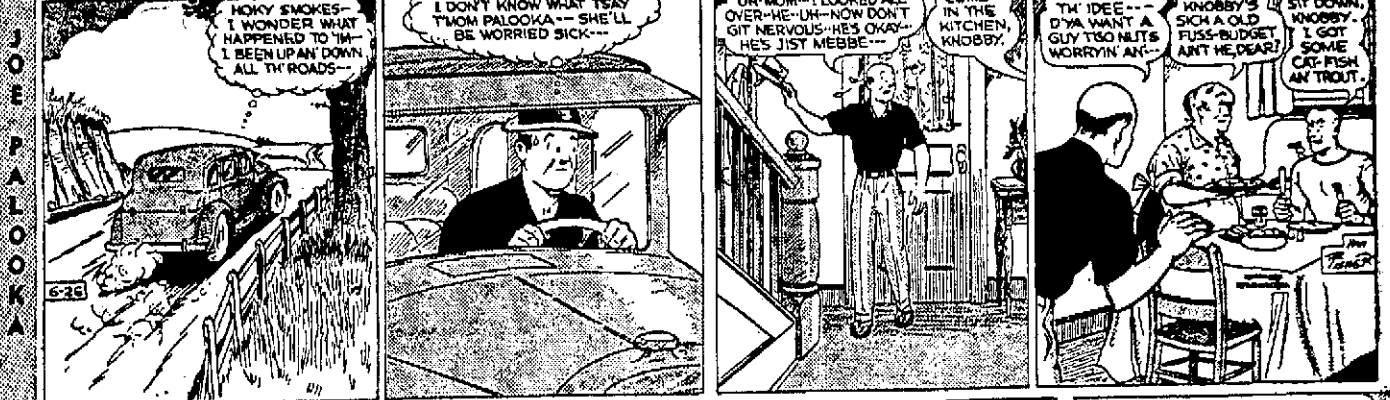
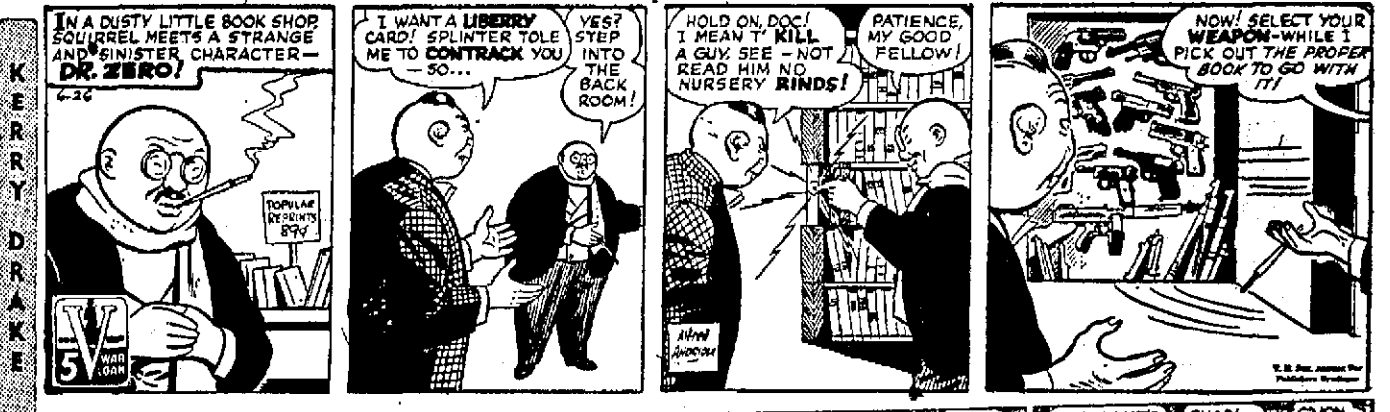
The first four items in that list are beans, and this fact brings me All beans plants produce pods, and seeds grow inside the pods. In the case of string beans, we eat

Uncle Ray's Corner

the pods and may hardly notice the small beans inside. Yet seeds grow in those pods as well as in the pods of other kinds of beans. String beans are picked while they are green. If we let them

grow until they were ripe, they would provide us with large-sized beans. Commonly the green string bean contains young kidney beans. Lima beans were named in honor of the capital city of Peru. They come from plants which are natives of Peru and other parts of Latin America.

Lima beans are white, or almost white. In that way they are like



Neighbor

Listen to the Farm Service Program

Facts about livestock, crops, soils, farm practices, and the Livestock Market

WIBA 12:45 to 12:30 PM 1310 on your dial

WIBU 12:40 to 12:45 PM Dial setting 1240

MONDAY THRU FRIDAY Broadcast from the stockyards of OSCAR MAYER & CO. MADISON, WIS. FINE MEATS SINCE 1883