

(Programs Listed in The Wisconsin State Journal are checked to the last possible moment. Changes may be made, however, at the discretion of stations and networks.)

What's on the Air

WIBA 1210	WFCB 1000	KMOX 1180
WHA 878	WVTV 1240	WGN 760
WLV 702	WENR 890	WIND 550
WBBM 780	WTMJ 820	WJLD 1160
WCCO 820	WMAQ 870	WLS 990

Tonight's Aces

Discussion
 9:30 p. m.—Congress Speaks (WBBM): Bernard Baruch, special adviser to Pres. Roosevelt, from Washington, on "America in the Post War World," on occasion of his acceptance of award from "The Churchman" magazine for distinguished service.
 9:45 p. m.—CBS Talk (WBBM): James L. Fly, chairman, Federal Communications Commission, discusses history of electrical communication and the part communications play in war and will play in post war world.



RED SKELTON



HILLIARD

WIBA TONIGHT
 5:30 News Edition
 5:45 Sports Parade
 5:55 News Report
 6:00 NBC Waring Victory Tunes
 6:15 Dinner Music
 6:30 NBC The Ronald Colman Show
 7:00 NBC Johnny Presents
 7:30 NBC News Today
 8:00 BLUE Famous Jury Trials
 8:30 NBC Fibber McGee & Molly

OTHER STATIONS TONIGHT

5:00 Terry and the Pirates—WENR
 5:15 Jimmy Allen—WENR
 5:45 Chick Carter—WGN
 5:55 University Special—WIBU
 6:00 Edwin C. Hill—WBBM WCCO
 6:30 State Legion—WGN
 6:45 Jack Armstrong—WENR
 6:45 Sunrider—WGN
 6:55 Capt. Midnight—WENR
 7:00 Fulton Lewis, Jr.—WIBU
 7:00 Fred Waring—WMAQ
 7:00 Jim Blaine—WMAQ
 7:05 Lum and Abner—WIBU
 7:15 Passing Parade—WBBM
 7:30 Let Yourself Go—WLS
 7:30 Supper Concert—WMAQ
 7:30 Those Who Serve—WTMJ
 7:45 American Melody Hour—WBBM
 8:45 H. Kattenborn—WMAQ
 9:00 Confidentially Yours—WGN
 9:00 Johnny Presents—WBBM WCCO
 9:00 Big Top—WBBM WCCO
 7:15 Lum and Abner—WLS
 7:30 Victory Jamboree—WIBU
 7:30 Date With Judy—WMAQ
 7:30 Pick and Pat Time—WGN
 7:30 Judy Canova—WBBM WCCO
 7:30 Duffy—WLS
 7:30 Duffery—WMAQ
 8:00 Burns and Allen—WBBM WCCO
 8:00 Famous Jury Trials—WIBU
 8:00 Gabriel Heatter—WGN WMAQ
 8:15 Return of Nick Carter—WGN
 8:30 American Forum of the Air—WIBU, WGN
 8:30 Carnival—WBBM KMOX
 8:30 Fibber McGee—WMAQ WTMJ
 8:30 Spotlight Bands—WENR
 8:35 Storyteller—WENR
 9:00 Church of Christ—WIBU
 9:00 Raymond Gram Swing—WENR
 9:00 Columbia Presents Corwin—WBBM

Variety

7 p. m.—Johnny Presents (WIBA): Ginny Simms; reading of four letters from a prisoner of war in Germany, Lieut. Kurt Freund.
 7:30 p. m.—Duffy's (WLS): guest, Paul Lukas... Judy Canova (WBBM): Judy opens a matrimonial bureau to get rid of a boarder.
 8 p. m.—Burns and Allen (WBBM): with George Jessel.

Miscellaneous

8:55 p. m.—Storyteller (WENR): "Secret Weapon."

Music

6:30 p. m.—American Melody Hour (WBBM): "Amor," "I'll Get By," "Louise," "And So Little Time," "Suddenly It's Spring."
 8:30 p. m.—Carnival (WBBM): Alec Templeton, "Zing and Day a la Sinatra," and "Night Went the Strings of My Heart;" Dorothy Shay, "Summertime;" orchestra, "Hallelujah," "Tiger Rag," "St. Louis Blues"... Spotlight Bands (WENR): Les Brown.

Drama

6:30 p. m.—Ronald Colman Show (WIBA): Maureen O'Sullivan in J. M. Barrie's "Quality Street," two-way conversation with servicemen in Pacific.
 7 p. m.—Big Town (WBBM): Steve Wilson catches up with draft dodgers.
 7:30 p. m.—A Date With Judy (WIBA): a fortune-telling seance causes family confusion.
 8 p. m.—Famous Jury Trials (WIBA): tells story of California gold rush days and trial of Walter Parmelee for murder of card shark... Mystery Theater (WMAQ): "Home Sweet Home," postponed drama.
 9 p. m.—Columbia Presents Corwin—WBBM

OSZIE NELSON BENADARET
 WIBA at 9:30

win (WBBM): "Tell Aviv," final program in trilogy of three cities.
 9:30 p. m.—Crime Files of Flammond (WGN): "The Case of the Insolent Grin."

Wednesdaytime

9:15 a. m.—My True Story (WLS): "Very Personal," story of romance which is almost wrecked by girl's temporary attraction to her socialist boss.

10 a. m.—Homemakers' Program (WHA): group of hostesses will describe "Thrill of New Trails;" and "Magazine Rack" will present article of interest to parents, "You and Your Child's Friends," read by Mrs. Melvin Von Eschen.
 10:15 p. m.—Sen. Burton K. Wheeler (WBBM): speaks in connection with congressional celebration of centennial of sending of first telegraph message.

10:30 a. m.—Morse Day (WMAQ): celebration of 100th anniversary of telegraphy; speakers, Rep. Alfred Bulwinkle (D-N. C.); Sen. Warren Austin (R-Vt.); Lella Livingston Morse; Sam Rayburn, speaker of the house.

10:45 a. m.—Baby Institute (WCFL): Dr. Thomas H. Hunter of College of Physicians and Surgeons, discussing "Intestinal Parasites."
 3 p. m.—Broadway Matinee (WBBM): guest singer, Genevieve Rowe.
 5:15 p. m.—Lyn Murray Orchestra (WBBM): with William Hargrave, baritone; "Song of the Volga Boatman;" "Why," "Temptation."

WIBA WEDNESDAY

MORNING
 6:00 Morning Variety
 6:30 News Report
 6:45 Patsy and Her Guitar
 7:00 NBC World News
 7:15 Radio Post
 7:25 Interlude
 7:30 Morning News Edition
 7:45 NBC Anniv. of First Morse Message
 7:50 Morning News
 7:55 Musical Clock
 8:00 Sports Parade
 8:05 Interlude
 8:45 Shopping Guide
 8:50 Show Tunes
 9:00 NBC Reporter
 9:30 Curtain Call
 10:00 NBC Road of Life
 10:15 State Medical Society
 10:40 Interlude
 10:45 NBC David Harum
 11:30 Linda's First Love
 11:15 Merry Roster
 11:30 Farm Roundup

AFTERNOON

12:00 Farm Roundup
 12:15 News Service
 12:30 Noon News Service
 12:40 Interlude

WHA WEDNESDAY

7:30 Bard Wagon
 7:45 Morning News
 7:55 News Review
 8:00 Music You Want
 8:30 Morning Melodies
 8:45 News and Views
 8:50 Fun Time
 8:55 News of Wisconsin
 8:57 Weather Report: Eric Miller, meteorologist
 10:00 Homemakers' Program: T. N. T. (Thrill of New Trails), Jack Marboe, Ed Rankin, Vera Nelson, John Clayton; The Homemakers' Magazine Rack; You and Your Child's Friends, Mrs. Melvin Von Eschen
 10:30 Musical Moments
 10:45 Treasury Solitude
 11:00 Short Story Time
 11:30 Noon News
 12:20 Noon News
 12:30 Farm Program: Should We Hold Summer Meetings?, Bruce Carter

OTHER STATIONS WEDNESDAY

MORNING
 6:00 Farm Service—WLS
 6:00 Top of the Morning—WTMJ
 6:15 Everett Mitchell—WMAQ
 6:15 Morning Devotions—WLS
 6:30 Back to the Bible—WIND
 7:00 Patsy Gallicchio—WMAQ
 7:01 Farm Service—WIBU
 7:45 Dr. Preston Bradshaw—WLS
 8:00 Musical Clock—WIBU
 8:00 Musical Clock—WIBU
 8:30 Breakfast Club—WLS
 9:00 Haven of Rest—WJLD
 9:00 Lora Lawton—WMAQ WTMJ
 9:00 Hebrew Christian Hour—WIBU
 9:00 Sweet River—WLS
 9:00 Valiant Lady—WBBM WCCO
 9:15 Kitty Foyle—WBBM WCCO
 9:15 My True Story—WLS
 9:30 Open Door—WBBM

NEWS BROADCASTS TONIGHT

5:00 WBBM 9:00 WENR
 5:00 WMAQ WGN 9:00 WIND WCFL
 5:01 WIBU 10:00 WIBU
 5:15 WMAQ WBBM 10:00 WGN WIND
 5:30 WBA WBBM 10:00 WBA WTMJ
 5:30 WCCO KMOX 10:15 WBA WMAQ
 5:30 WTMJ 10:15 WBA WMAQ
 5:35 WBBM WMAQ 10:30 WGN WBBM
 5:45 WBA 10:45 WBA WMAQ
 5:55 WBA 10:45 WBA WMAQ
 5:55 WBA 10:45 WBA WMAQ
 6:00 WBBM WIBU 11:00 WGN KMOX
 6:00 WLS WIND 11:00 WCCO WIND
 6:15 WTMJ WMAQ 11:30 WBA WENR
 6:30 WTRU WGN 11:30 WGN WBBM
 6:45 WMAQ 12:00 WGN WBBM
 7:00 WLS 12:55 WMAQ WENR
 7:25 WIBU 1:00 WGN WBBM
 7:30 WIND 1:00 WBBM
 7:55 KMOX WBBM 1:55 WMAQ
 8:00 WGN 2:00 WIND (also 3, 4, 5)

WEDNESDAY

A. M.
 5:20 WMAQ WIND 1:45 WGN
 5:45 WGN 2:45 WLS
 6:00 WIND WMAQ 3:00 WGN
 6:05 WTMJ 3:30 WFCB WBBM
 6:20 WBA 3:45 WGN WIND
 6:30 KMOX WTMJ 4:00 WGN WIND
 6:45 WLS 4:15 WENR
 6:55 WBBM WBBM 4:30 WGN WMAQ
 7:00 KMOX WIND 5:00 KMOX WBBM
 7:00 WBBM WIND 5:01 WIBU
 7:10 WBA WLS 5:15 WMAQ
 7:15 WGN WCCO WBBM
 7:15 WCCO WBBM 5:20 WTMJ WBA
 7:30 WBA WTMJ 5:45 WBA
 7:45 WBA 5:45 WBA WMAQ WBBM
 7:50 WBA 5:55 WBA
 7:55 WMAQ WTMJ 5:55 KMOX WBBM
 8:00 WIND KMOX 6:30 WBBM WBBM
 8:00 WBBM WGN 6:30 WGN WBBM
 8:15 WMAQ WLS 6:15 WBA
 8:25 WTMJ 6:15 WMAQ WTMJ
 8:40 WMAQ 6:30 WBA WMAQ
 8:45 WBBM 6:45 WBA WMAQ
 8:55 KMOX 7:00 WLS
 9:00 WIND WGN 7:00 WGN WIND
 9:05 WTMJ WMAQ 7:30 WIND WCFL
 9:15 WBA WFCB 7:55 KMOX WBBM
 9:40 WLS WGN 7:55 WGN WIND
 9:50 WBA 8:00 WGN WBBM
 10:00 WIND WJLD 8:00 WCFL
 10:30 WLS WIND 8:00 WENR WIBU
 10:30 WBA 10:00 WBA
 10:45 WLS 10:00 WBA WTMJ
 11:00 WIND WGN 10:15 WMAQ WBA
 11:00 WIND WMAQ 10:30 WGN WBBM
 11:30 WMAQ WLS 10:45 WGN WENR
 P. M.
 11:30 WGN WBBM
 12:00 WCFL WGN 11:30 WGN WMAQ
 12:00 WIND WBA 11:30 WGN WMAQ
 12:15 WIBU 11:00 WTMJ KMOX
 12:20 WBA 11:55 WBA WENR
 12:20 WBBM WBA 12:00 WMAQ
 12:30 WMAQ WCCO 12:55 WENR WMAQ
 12:45 WCFL 1:00 WBBM
 12:50 WTMJ 1:30 WGN WGN
 1:00 WGN 1:55 WMAQ
 1:00 WIND WCFL 2:00 WIND (also 3, 4, 5)

SPORTS REVIEWS TONIGHT

5:00 WJLD 6:15 WBBM
 5:40 WMAQ 7:00 WIND
 5:45 WBA WTMJ 9:00 WIND
 6:00 KMOX WJLD

WEDNESDAY

P. M.
 5:45 WTMJ WBA
 2:45 WIND WJLD 6:00 WJLD KMOX
 3:00 WIND WJLD 6:35 WBBM
 5:40 WBA WTMJ 9:00 WIND
 6:00 KMOX WJLD
 1:00 WLS

MARKETS WEDNESDAY

A. M.
 6:25 KMOX 12:00 WJLD
 11:45 WLS 12:15 WBA
 12:30 WBA 12:40 WBA
 12:50 WBA 12:50 WBA
 1:00 WLS

DAILY CROSSWORD

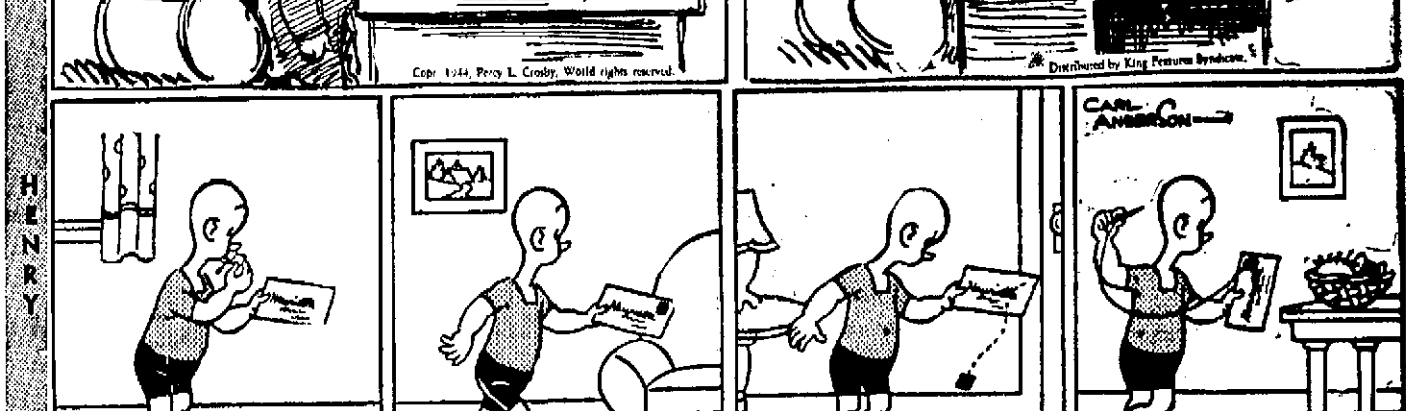
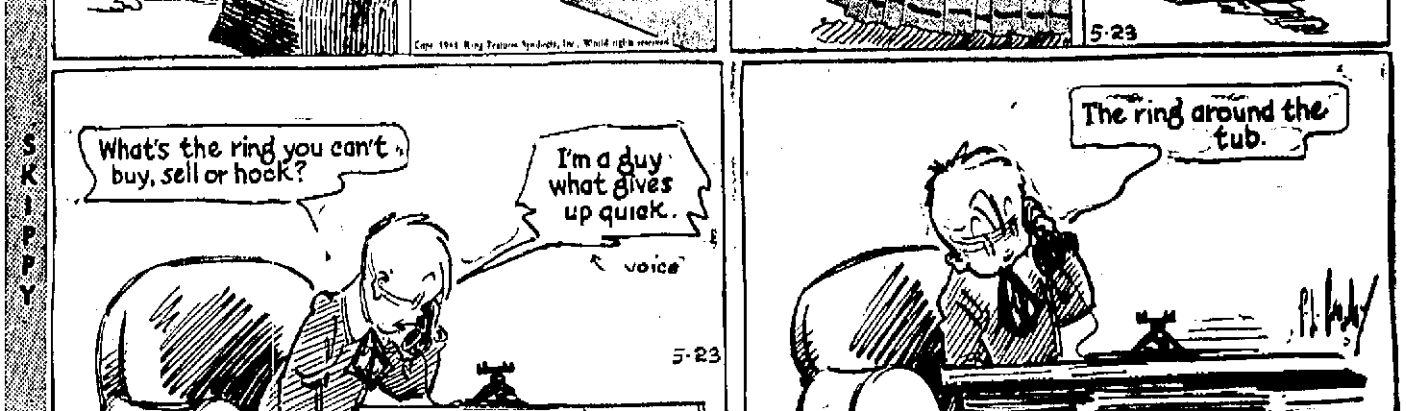
1. Type measures	2. Bearing	23. To leave
4. God of earth	3. Scour	24. By will
7. Per to weight	4. Perched	26. Alcoholic liquor
8. (Physics)	5. Issues of newspapers	28. Weaken
D. Take as one's own	6. Sham	29. Force of utterance
12. Proposal	7. An exchange	30. Conical tents
13. Cat-like animal	8. A continent	31. Roman money
15. Indehiscent fruit	10. Dressed skin of an animal	32. First man
17. A bulrush	11. Woody perennial	35. Girl's name
18. Equip	12. Biblical city	36. Task
20. Fine cotton fabric	16. Marble	37. People of Netherlands
22. Crust on a sore	19. Choking bit	41. African river
24. Court	21. Also	
25. Keen		
27. Beginning		
31. By virtue of being		
33. Rational		
34. Pretended		
38. Vitality		
39. Engagement		
40. Source of light		
42. Music note		
43. Melodies		
45. Color slightly		
47. Dovifish (zoöl.)		
48. Sallates		
49. Trout (poss.)		
50. Chop		

CRYPTOQUOTE—A cryptogram quotation

ATWDW PI KE JDPWN CTPXT SWKJAT
 EN APVW HEWI KEA HPVPKPIT GKH
 IENAWK—BSGAE

Yesterday's Cryptogram: OH SLEEP! IT IS A GENTLE THING. BELOVED FROM POLE TO POLE—COLERIDGE.

Distributed by King Features Syndicate, Inc.



Uncle Ray's Corner

COCONUTS

Coconut Palm Provides Foodstuffs and Valuable Oil

The coconut palm is of great importance in the far-flung islands of the Pacific ocean. The tree may grow to a height of from 70 to 100 feet, but it can bear fruit when only 12 or 15 feet high. The nuts are up near the top, and it is quite a task to reach them when the tree is very tall. There are no limbs to hold on the way up.

The long leaves of coconut palms take the place of limbs. They may be 12 or 15 feet long, and are bunched in the upper part of the tree. Natives of Pacific islands are experts at climbing up the trunks.

A wild coconut palm is likely to provide from 70 to 100 nuts in a year. On plantations, however, one of these palms may yield from 200 to 250 nuts.

There is no special "harvest season" on tropical islands. Coconuts can be gathered during any month of the year.

A palm will produce nuts in from four to six years after being planted. It is likely to keep on producing them for 75 or 80 years.

Inside each nut is a thick lining which makes up the "kernel." This is eaten by many natives, and it is a good food.

So-called "milk" is found inside young coconuts. This milk is drunk and enjoyed by many persons who live where the palms grow. When it gets to market in this country, however, the pleasant taste usually is lost.

Valuable oil can be pressed from coconut kernels. Sometimes the natives boil the kernels until the oil rises to the surface of the water, where it is skimmed off. Island folk have used this oil to light their huts.

Seven or eight coconuts will produce a quart of oil. Millions of coconuts are exported from the West Indies, and in parts of South and Central America. Coconut palms have been planted in Florida, where they have grown with a great deal of success.

(For NATURE or TRAVEL section of your scrapbook.)

Tomorrow: More About Palms.