

(Programs listed in The Wisconsin State Journal are checked to the last possible moment. Changes may be made, however, at the discretion of stations and networks.)

What's on the Air

Table with columns for station call letters and program names. Includes WIBA 1310, WFLA 1000, KMOX 1120, etc.

Tonight's Aces

New Program 6:30 p. m.—Let Yourself Go (WLS): new audience participation show...

Drama 6:30 p. m.—Everything for the Boys (WIBA): Ronald Colman with Martha Scott in 'Girl of the Road'...

7 p. m.—Big Town (WBBM): 'Where There's Smoke,' story of sabotage in a paper mill.

7:30 p. m.—A Date With Judy (WIBA): an abandoned pig upsets the Foster family.

8 p. m.—Mystery Theater (WMAQ): 'Going, Going, Gone,' tale of an auctioneer...

8:30 p. m.—Words at War (WIBA): dramatization of Konrad Heiden's 'Der Fuehrer'.

Discussion 8:30 p. m.—Congress Speaks (WBBM): Rep. Jesse P. Wolcott (R-Mich.) answers Rep. Wright Patman (D-Tex.)...

Miscellaneous 8:15 p. m.—Bob Ripley (WGN): guest, Capt. Victor Woodrick, who was knocked out of a plane...

8:30 p. m.—Report to the Nation (WBBM): Quentin Reynolds tells story of the American tanker...

8:55 p. m.—Storyteller (WGN): 'The Magic Bells of the Kremlin,' true tale revealing one of Houdini's feats.

Music 6 p. m.—Fred Waring (WIBA): plays tunes for naval operating base at Tarawa.

6:30 p. m.—American Melody (WMAQ):



RITA HAYWORTH WBBM at 8

Hour (WBBM): 'Goodnight, Wherever You Are,' 'Moonlight and Roses,' 'By the River of the Roses,' 'Shine On, Harvest Moon,' 'I'll Get By.'

8:30 p. m.—Spotlight Bands (WBBM): Frankie Masters.

10:30 p. m.—Sinfonietta (WIBU): Ravel's 'Pavanne,' Overture to 'Secrets of Suzanna' and Ibert's 'Divertissement.'

Variety 7:30 p. m.—Duffy's (WLS): with Fred Allen as guest...

8 p. m.—Burns and Allen (WBBM): with Rita Hayworth; Gracie gives the movie star advice on how to stay happily married to a genius.

Wednesdaytime 9:45 a. m.—Listening Post (WLS): dramatization of magazine story, 'Parting Is a Pain in the Neck,' by Robert Carson.

10:45 a. m.—What's Your Idea? (WIBU): J. P. Popple, radio engineer, describes some wonders we may expect of radio of the future.

3 p. m.—Broadway Matinee (WBBM): guest singer, Celeste Holm, star of 'Oklahoma.'

5:15 p. m.—To Your Good Health (WBBM): guest, Earl Wrightson, baritone; 'Lech Lomond,' 'I'll Take You Home Again, Kathleen,' 'We Sail the Ocean Blue,' 'I Am the Captain of the Pinafore.'

OTHER STATIONS WEDNESDAY MORNING 12:00 Elizabeth Hart Presents—WMAQ 12:00 Life Can Be Beautiful—WBBM 12:00 The Grandeur—WTMJ 12:05 Top of the Morning—WTMJ 12:15 Everett Mitchell—WMAQ 12:15 Morning Devotions—WLS 12:20 Back to the Bible—WBD 12:30 Pats Gallagher—WMAQ 12:30 Farm Service—WIBU 12:30 Your Neighbor—WMAQ 12:35 Lancelotti—WIBU 12:40 The Answer—WBBM 12:45 Breakfast Club—WLS 12:50 Kitty Foyle—WMAQ WTJM 12:55 Sweet Lady—WLS 1:00 Volant Lady—WBBM WCCO 1:05 Kitty Foyle—WMAQ WCCO 1:10 Open Door—WBBM 1:15 Heppner—WMAQ WTJM 1:20 Hebrew-Christian Jr.—WIBU 1:25 Lunchtime—WBBM WCCO 1:30 Star Playhouse—WMAQ 1:35 Rachel's Children—WBBM 1:40 Lunchtime Hill—WBBM 1:45 Road of Life—WMAQ WTJM 1:50 Breakfast at Sardi's—WLS 1:55 Vic and Sade—WMAQ WTJM 2:00 Second Husband—WBBM WCCO 2:05 Brave Tomorrow—WMAQ 2:10 Bright Horizon—WBBM WCCO 2:15 Linda's World—WBBM WB 2:20 David Harum—WMAQ WTJM 2:25 Aunt Jenny's Stories—WBBM 2:30 Kate Smith—WMAQ WCCO 2:35 Guiding Light—WTMJ 2:40 The Father's Daughter—WMAQ 2:45 Hank Carter 2:50 Martin and Helen—WLS 2:55 Farm Hour—WIBU 3:00 The Sister—WBBM WCCO KMOX 3:05 Linda's World—WBBM WCCO 3:10 Today's Children—WTMJ 3:15 Helen Trent—WBBM WCCO 3:15 What of the World—WMAQ 3:20 Our Gal Sunday—WBBM WCCO 3:25 Reveille Roundup—WMAQ

AFTERNOON 2:00 Dinner Bell Time—WLS

NEWS BROADCASTS TONIGHT 5:00 WIND WBBM 5:35 WIND WMAQ WGN 6:00 WIND WBBM 6:35 WIND WMAQ WGN 7:00 WIND WBBM 7:35 WIND WMAQ WGN 8:00 WIND WBBM 8:35 WIND WMAQ WGN 9:00 WIND WBBM 9:35 WIND WMAQ WGN 10:00 WIND WBBM 10:35 WIND WMAQ WGN 11:00 WIND WBBM 11:35 WIND WMAQ WGN 12:00 WIND WBBM 12:35 WIND WMAQ WGN

MARKETS WEDNESDAY A.M. 6:25 KMOX 12:00 WIBU 11:30 WIBU 12:10 WIBU 11:30 WLS 12:15 WIBA 11:45 WLS 12:35 WGN 12:55 WLS 1:10 WLS

J. W. FRENZ President of Sauk County Bar Association and ROBERT GOLLMAR Baraboo Attorney will Speak in Behalf of Judge Henry J. Bohn Candidate for CIRCUIT JUDGE of Dane and Sauk Cos. Tune In On WIBA Tonight at 5:45 to 5:55 P. M.

PAID AD.—Authorized and issued by Judge Henry J. Bohn for which he has paid the Madison newspapers.

Table with columns for station call letters and program names. Includes WIBA 1310, WFLA 1000, KMOX 1120, etc.

Table with columns for station call letters and program names. Includes WIBA 1310, WFLA 1000, KMOX 1120, etc.

Table with columns for station call letters and program names. Includes WIBA 1310, WFLA 1000, KMOX 1120, etc.

Table with columns for station call letters and program names. Includes WIBA 1310, WFLA 1000, KMOX 1120, etc.

Table with columns for station call letters and program names. Includes WIBA 1310, WFLA 1000, KMOX 1120, etc.

Table with columns for station call letters and program names. Includes WIBA 1310, WFLA 1000, KMOX 1120, etc.

Table with columns for station call letters and program names. Includes WIBA 1310, WFLA 1000, KMOX 1120, etc.

Table with columns for station call letters and program names. Includes WIBA 1310, WFLA 1000, KMOX 1120, etc.

Table with columns for station call letters and program names. Includes WIBA 1310, WFLA 1000, KMOX 1120, etc.

Table with columns for station call letters and program names. Includes WIBA 1310, WFLA 1000, KMOX 1120, etc.

Table with columns for station call letters and program names. Includes WIBA 1310, WFLA 1000, KMOX 1120, etc.

Table with columns for station call letters and program names. Includes WIBA 1310, WFLA 1000, KMOX 1120, etc.

Table with columns for station call letters and program names. Includes WIBA 1310, WFLA 1000, KMOX 1120, etc.

Table with columns for station call letters and program names. Includes WIBA 1310, WFLA 1000, KMOX 1120, etc.

Table with columns for station call letters and program names. Includes WIBA 1310, WFLA 1000, KMOX 1120, etc.

Table with columns for station call letters and program names. Includes WIBA 1310, WFLA 1000, KMOX 1120, etc.

Table with columns for station call letters and program names. Includes WIBA 1310, WFLA 1000, KMOX 1120, etc.

Table with columns for station call letters and program names. Includes WIBA 1310, WFLA 1000, KMOX 1120, etc.

Table with columns for station call letters and program names. Includes WIBA 1310, WFLA 1000, KMOX 1120, etc.

Table with columns for station call letters and program names. Includes WIBA 1310, WFLA 1000, KMOX 1120, etc.

Table with columns for station call letters and program names. Includes WIBA 1310, WFLA 1000, KMOX 1120, etc.

Table with columns for station call letters and program names. Includes WIBA 1310, WFLA 1000, KMOX 1120, etc.

Table with columns for station call letters and program names. Includes WIBA 1310, WFLA 1000, KMOX 1120, etc.

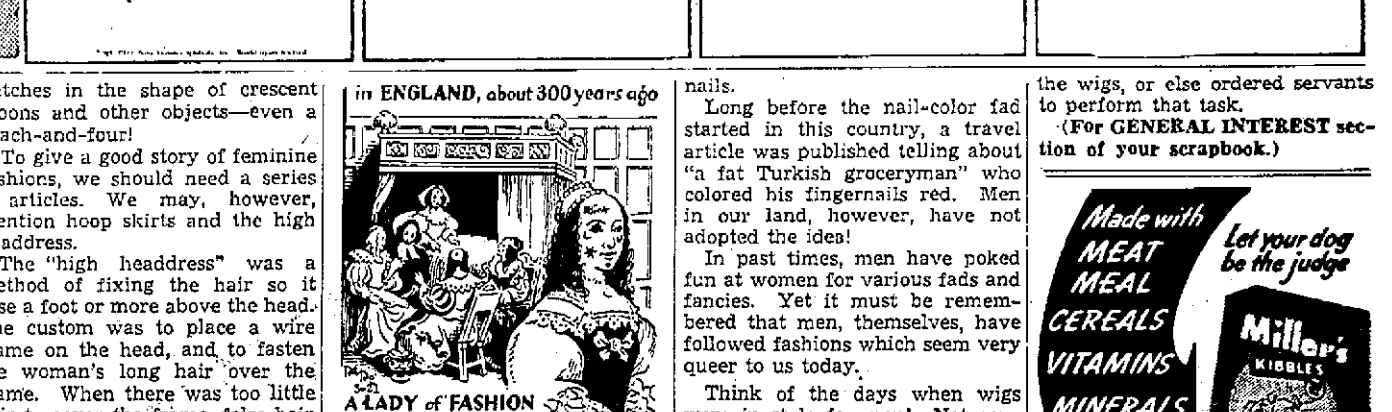
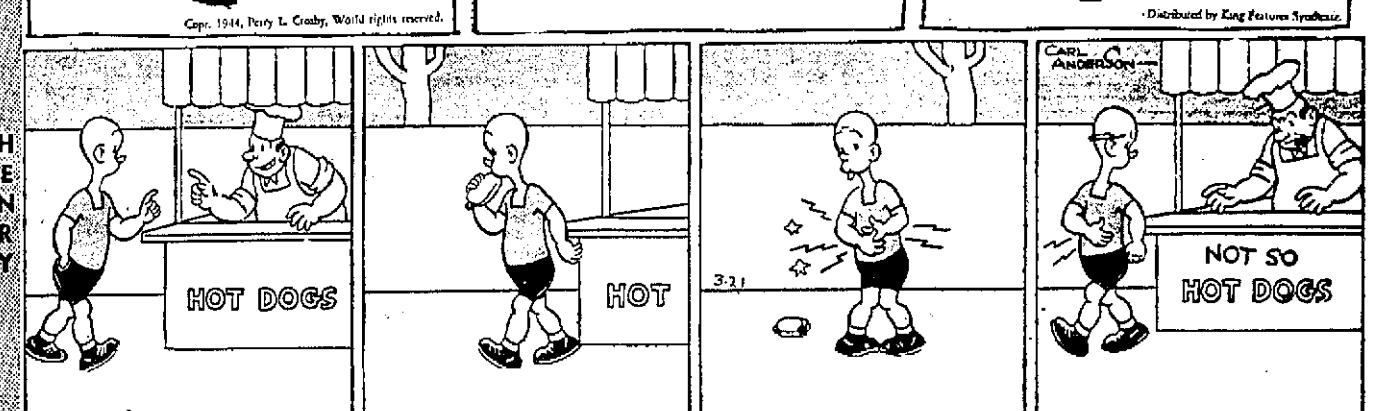
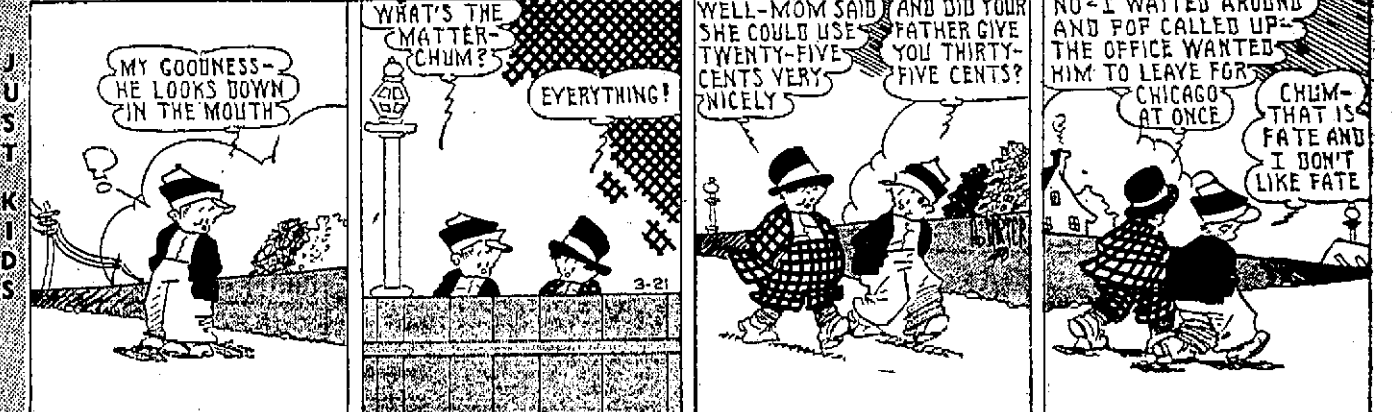
Table with columns for station call letters and program names. Includes WIBA 1310, WFLA 1000, KMOX 1120, etc.

Table with columns for station call letters and program names. Includes WIBA 1310, WFLA 1000, KMOX 1120, etc.

Table with columns for station call letters and program names. Includes WIBA 1310, WFLA 1000, KMOX 1120, etc.

Table with columns for station call letters and program names. Includes WIBA 1310, WFLA 1000, KMOX 1120, etc.

Table with columns for station call letters and program names. Includes WIBA 1310, WFLA 1000, KMOX 1120, etc.



DAILY CROSSWORD puzzle grid with clues for Across and Down.

Buy U. S. War Bonds and Stamps

Uncle Ray's Corner Women Put Moons and Coaches on Faces as 'Beauty Spots' Article text about fashion trends.

MARINE HAS SITUATION WELL IN ARMS Advertisement for Fleischmann's yeast with a cartoon illustration.

Advertisement for Miller's Kibbles Dog Food with a picture of a dog.

Advertisement for Uncle Ray's Corner with a cartoon illustration.

Advertisement for Uncle Ray's Corner with a cartoon illustration.

Advertisement for Uncle Ray's Corner with a cartoon illustration.

Advertisement for Uncle Ray's Corner with a cartoon illustration.

Advertisement for Uncle Ray's Corner with a cartoon illustration.

Advertisement for Uncle Ray's Corner with a cartoon illustration.

Advertisement for Uncle Ray's Corner with a cartoon illustration.

Advertisement for Uncle Ray's Corner with a cartoon illustration.