

Complete Radio Programs and Highlights for Today

CHICAGO FREQUENCIES.

W-G-N-720 WMAQ-670 WJJD-1160
 W59C-15.0 WBBM-780 WJOB-1230
 W51C-46.1 WAIT-820 WEDC-1240
 W87C-46.7 WLS-800 W5BC-1340
 W75C-47.5 WENR-800 WCRW-1240
 WBEZ-45.5 WAAF-050 WNRW-1280
 WIND-560 WCFL-1000 WGES-1300
 WILL-580 WMBI-1100 WHFC-1450

MORNING.

[M] Indicates MBS. [N] NBC. [C] CBS. and [B] Blue network.

5:45-W-G-N-Breakfast Time Frolles. WBBM-Farm and Factory hour. WIND-America Goes to Work.
 6:00-W-G-N-The Farm hour. WIND-WMAQ-News reports. WLS-Farm news program. WJJD-Breakfast Frolic. WCFL-Come On, Get Up. WBBM-Paul Gibson program.
 6:15-WLS-Morning Devotions. WIND-Yawn Patrol program. WMAQ-Town and Farm hour.
 6:30-W-G-N-The Farm hour. WIND-Family Bible League. WLS-Doc Hopkins program. WAAF-Farm Folks hour.
 6:45-WLS-Ervin Lewis, news program. WIND-Yawn Patrol program. WMAQ-Morning Jubilee: news.
 7:00-W-G-N-Record Reveille: news. WMAQ-The Suburban hour. WBBM-News of the World [C]. WAAF-The Breakfast Express. WCFL-Daily War Journal [B]. WLS-Alex Dreier, news reports. WIND-News; Polish program. WJJD-News Edition. WILL-The Concert Airs.
 7:15-W-G-N-Dr. Preston Bradley. WBBM-Art Meier, news. WLS-Red Foley and Saddle Pals. WCFL-The Musical Clock.
 7:30-W-G-N-Record Reveille. WBBM-The Wishing Well. WLS-Chuck Acers program. WIND-Back to the Bible. WAAF-Heaven and Home hour. WMAQ-Coffee and Toast. WJJD-Darby Hill news. WCFL-Time to Shine, music.
 7:45-WLS-Mountain Theater. WBBM-Smilin' Ed McConnell.
 7:55-WMAQ-Clifton Utley, news.
 8:00-W-G-N-Your Morning News. WLS-Amanda Snow, songs. WMAQ-Your Neighbor program. WBBM, WMBI-News reports. WJJD-Morning Serenade. WCFL-The Breakfast Club [B]. WIND-News; Marine recruiting. WGES-George Jaworowski. WILL-Musical Masterworks.
 8:15-W-G-N-Good Morning program. WBBM-You Know the Answer? WMAQ-News and music. WJJD-Christian Science program. WLS-Ervin Lewis, news reports. WAF-Christians in Action. WIND-The Chapel Singers [C]. WMBI-Memory Gems.
 8:25-W-G-N-Rhythm of Life.
 8:30-W-G-N-Top o' the Mornin'. WIND-News; Rhythm Express. WBBM-Ann Jimmie; serenade. WMAQ-Musical and news. WJJD-National Radio Personalities. WLS-The Breakfast Club [B]. WEDC-Czech Breakfast program. WAF-The Lutheran program. WMAQ-News reports. WJJD-News reports. WLS-Julian Bentley, news reports. WMBI-Organ Melodies. WCFL-Bing Crosby, songs. WLLI-Illinois Farm hour. WJJD-Noonday Service in Loop. WBBM-Vic and Sade, serial [C].

8:45-W-G-N-Butch Davis, markets. WMAQ-The Music Hall. WLS-Harmonies; markets. WBBM-The Goldbergs, serial [C]. WCFL-R. McCormick, news [N].
 9:00-W-G-N-The Deacon, philosophy. W51C-The Salon hour. WMAQ-Glimmering Light, serial [N]. WCFL, WIND, WAAF-News. WLS-Music Preferred. WJJD-Live stock market. WBBM-Young Dr. Malone [C]. WILL-Homomakers' program. W75C, WMBI-Living Water.
 9:15-W-G-N-Your Income Tax. WMAQ-Lonely Women, serial [N]. WJJD-Dugout Interviews. WBBM-Joyce Jordan, M. D. [C]. WCFL-Treasury program. WLS-Market: The Rangers. WIND-Our Armed Forces. WAAF-Grab Bag.
 9:25-W-G-N-Ralph Glnsburgh's orch. 1:30-W-G-N-Natural Goes Calling [M]. WMAQ-Light of the World [N]. WIND-Sentimental Serenade. WCFL-News and varieties. WJJD-News, sports slants. WLS-Julian Bentley, news. WBBM-We Love and Learn [C]. WILL-The Digest and News. W75C, WMBI-Sinfonietta.
 1:15-W-G-N-News bulletin. WIND-Gypsy Caravan [C]. WLS-Mac and Bob program. WMAQ-Betty Crocker [N]. WAIT-Pepper Young's Family [C]. WAIT-Voice of the Army. WCFL-Favorite Melodies. WJJD-Dugout Interviews.
 1:30-W-G-N-The Music Mart. W51C-Pop concert. WMAQ-Story of Mary Marlin [N]. WIND-WCFB-News. WAIT-News; Victory Spotlight. WBBM-John Harrington, news. W75C, WMBI-Rollinsia news. WILL-Inside the Books. WLS-Morton Downey, songs [B]. WAAF-Bing Crosby, songs.
 2:15-WIND-Sports Edition to 3 p. m. WILL-The Concert hour. WLS-Of Interest to Women. WBBM-Moot the Missus. WMAQ-Ma Perkins, serial [N]. WCFL-Make Believe Danceland.
 2:30-W-G-N-News: Out to Ball Game. W51C-Ivory Skirmishes. WMAQ-Pepper Young's Family [N]. WAIT-Race results and news. WBBM-Gold Coast Rhythm. W75C, WMBI-Bible Message.
 2:45-W-G-N-The Leadoff Man. WBBM-Try and Stump Us. WMAQ-Right in Happiness [N]. WCFL-Musical Varieties. WLS-Julian Bentley, news. WAAF-Maritime commission.
 3:00-W-G-N-Basball: Cubs-Pittsburgh. W59C-Memory Lane, music. W51C-Purseome Harmonies. WENR-Blue Frolles [B]. WMAQ-Backstage Wife [N]. WIND-WGES-News.
 3:15-WILL-Music Appreciation hour. WAAE-They 00 [C]. WJJD, WCFL-Basball: Cubs-Pittsburgh. WBBM-Home Front Reporter [C].
 3:15-WIND-Sports Edition. WGES-Uncle Sam, serial. WMAQ-Stella Dallas, serial [N].
 3:30-W59C-Rhythm Matinee. W51C-Dance Maestro. WBBM-News reports. WENR-Beulah Karney program. WMAQ-Lorenzo Jones [N]. WGES-Italian Matinee.
 3:45-WBBM-Mr. Moneybags. WMAQ-Young Wilder Brown [N]. WENR-Off the Record: news. WMBI-Musical Notebook.
 4:00-W59C-On Wings of Song. W51C-Rovine in Music. WMAQ-When a Girl Marries [N]. WENR-The Mystery Chef. WBBM-Paul Gibson program. WIND-News.
 4:15-W59C-Pop concert. WIND-Sports Edition to 5. WENR-The Slogan Saluto. WMAQ-Portia Faces Life [N]. WILL-Music That Lives. WJJD-The Music Reel.
 4:30-WENR-News and Blue Points. WGES-Old Vienna. WMBI-W75C-Hebrew Christians. WMAQ-Just Plain Bill [N]. WBBM-Missus Goes to a Party.
 4:45-WMAQ-Front Page Farrell [N]. WENR-Dick Tracy, serial [B]. WBBM-American Woman [C].
 5:00-W-G-N-Swing It program. W59C-Soft Swing program. W75C, WIND, WCFL-News. W51C-Waltz Musical. WBBM-Clifton Utley, news. WENR-Torry and the Pirates [B]. W75C, WMBI-Haven of Rest. WMAQ-Music at Five. WJJD-Pan-Americana. WAIT-Race results. WILL-Music of the Masters.
 5:15-W-G-N-Tenth Inning: music, news. W59C-Let's Go Latin. W75C-Organ Echoes. WIND-Sports Edition. WCFL-Hit Tunes of the Day. WBBM-Serenade program. WENR-Hop Harrigan, sketch [B]. WMAQ-News: J. Turner, songs.
 5:30-W-G-N-Safety Lesson Time. W59C-Rhythm Cocktails. W51C-High Jinks in Tompo. WENR-Jack Arnetrons [B]. WJJD-News reports. WIND-Star Parade. WCFL-Dance orchestra. WBBM-John Harrington, news. WMAQ-Musical Memories. WMBI-W75C-Gems of Melody.
 5:45-W-G-N-The Supremes [M]. WBNM-The World Today [C]. WENR-Archie Andrews [B]. WIND-Dick Anson, program. WMAQ-Bill Noble, news reports. WCFL-Worklets for Victory. WJJD-Varieties program.
 5:55-WBBM-J. C. Harsch, news [C].

Listeners' Choice

SPECIAL EVENTS.

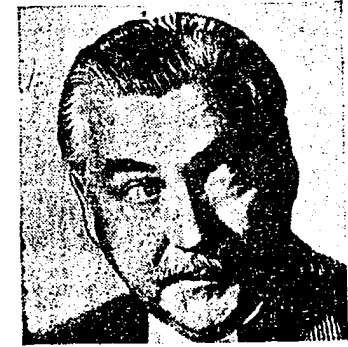
3:00 p. m.-W-G-N, WJJD, WCFL-Cubs open a series with Pittsburgh. 10:30-WBBM-People's Platform discusses the Balkan crisis. 10:45-WMAQ-"Columbia: A Study in Democracy," with Dr. Robert S. Platt, T. Walter Johnson, and Joseph H. Spear.

VARIETY, COMEDY, AND DRAMA.

Noon-W-G-N-Bondwagon, with Woody Herman's music and Marie Nash. 3:00 p. m.-WBBM-Home Front Reporter. Guest: Mrs. Jimmy Doolittle. 4:45-WBBM-American Women, with Eloise Kummer as narrator. 7:30-W-G-N-Sherlock Holmes presents "The Retired Colourman." 8:00-WENR-Gang Busters in another crime dramatization. 8:00-WBBM-Playhouse: Madeleine Carroll and Raymond Massey, co-star in "Casablanca." 8:30-W-G-N-Double or Nothing. Guest: J. E. Baker, aviation expert. 8:30-WBBM-That Brewster Boy, starring Arnold Stang as Joey. 8:30-WMAQ-People Are Funny, quiz, with Art Baker as conductor. 9:00-WBBM-Thanks to the Yanks. Comedy quiz, with Bob Hawk, M. C. 9:30-W-G-N-Soldiers with Wings, with Jean Parker, Mischa Auer.

MUSIC.

10:15 a. m.-W-G-N-Musical Milkwagon, with Curt Massey, Patti Clayton. 6:00 p. m.-WJJD-Dinner concert: Chopin's "Polonaise Nulitane." 7:00-WMAQ-Concert, with Lucille Manners and Ross Graham. 7:30-WLS-Meet Your Navy, with Durward Kirby, M. C., and Lt. Comdr. Eddie Penbody. Guests: Seamen Bobby Riggs and Walter C. Crews. 8:00-WMAQ-Waltz Time, with Frank Munn and Evelyn MacGregor. 8:30-WENR-Spotlight Bands featuring Vincent Lopez's orchestra. 10:05-WIND-Symphonic hour: "In the Steppes of Central Asia."



Nigel Bruce plays the role of Dr. Watson in the Sherlock Holmes series heard at 7:30 p. m. Fridays over W-G-N and Mutual.

AFTERNOON.

12:00-W-G-N-The Bradwagon show. W51C-Musical Toto-a-Tele. WLS-Dinnerbell Time. WJJD, WMBI, W75C-News. WAF-Lunch 520 Club. WMAQ-Woman's Home Council. WAAF-The Symphonic hour. WCFL-Baukhage Talking [B]. WILL-Neontime Melodies. WIND-News; Serenade at Noon. WBBM-Lilo Can Be Beautiful [C]. WGES-Polish Dinnerbell program.
 12:15-WMAQ-Times and Tips. WJJD-Symphony in Swing. WBBM-Ma Perkins, serial [C]. WCFL-The Gospel Singer [B].
 12:30-WG-N-News reports. W51C-Luncheon Varieties. WMAQ-News reports. WLS-Julian Bentley, news reports. WMBI-Organ Melodies. WCFL-Bing Crosby, songs. WLLI-Illinois Farm hour. WJJD-Noonday Service in Loop. WBBM-Vic and Sade, serial [C].
 12:45-W-G-N-Butch Davis, markets. WMAQ-The Music Hall. WLS-Harmonies; markets. WBBM-The Goldbergs, serial [C]. WCFL-R. McCormick, news [N].
 1:00-W-G-N-The Deacon, philosophy. W51C-The Salon hour. WMAQ-Glimmering Light, serial [N]. WCFL, WIND, WAAF-News. WLS-Music Preferred. WJJD-Live stock market. WBBM-Young Dr. Malone [C]. WILL-Homomakers' program. W75C, WMBI-Living Water.
 1:15-W-G-N-Your Income Tax. WMAQ-Lonely Women, serial [N]. WJJD-Dugout Interviews. WBBM-Joyce Jordan, M. D. [C]. WCFL-Treasury program. WLS-Market: The Rangers. WIND-Our Armed Forces. WAAF-Grab Bag.
 1:20-W-G-N-Ralph Glnsburgh's orch. 1:30-W-G-N-Natural Goes Calling [M]. WMAQ-Light of the World [N]. WIND-Sentimental Serenade. WCFL-News and varieties. WJJD-News, sports slants. WLS-Julian Bentley, news. WBBM-We Love and Learn [C]. WILL-The Digest and News. W75C, WMBI-Sinfonietta.
 1:45-W-G-N-News bulletin. WIND-Gypsy Caravan [C]. WLS-Mac and Bob program. WMAQ-Betty Crocker [N]. WAIT-Pepper Young's Family [C]. WAIT-Voice of the Army. WCFL-Favorite Melodies. WJJD-Dugout Interviews.
 2:00-W-G-N-The Music Mart. W51C-Pop concert. WMAQ-Story of Mary Marlin [N]. WIND-WCFB-News. WAIT-News; Victory Spotlight. WBBM-John Harrington, news. W75C, WMBI-Rollinsia news. WILL-Inside the Books. WLS-Morton Downey, songs [B]. WAAF-Bing Crosby, songs.
 2:15-WIND-Sports Edition to 3 p. m. WILL-The Concert hour. WLS-Of Interest to Women. WBBM-Moot the Missus. WMAQ-Ma Perkins, serial [N]. WCFL-Make Believe Danceland.
 2:30-W-G-N-News: Out to Ball Game. W51C-Ivory Skirmishes. WMAQ-Pepper Young's Family [N]. WAIT-Race results and news. WBBM-Gold Coast Rhythm. W75C, WMBI-Bible Message.
 2:45-W-G-N-The Leadoff Man. WBBM-Try and Stump Us. WMAQ-Right in Happiness [N]. WCFL-Musical Varieties. WLS-Julian Bentley, news. WAAF-Maritime commission.
 3:00-W-G-N-Basball: Cubs-Pittsburgh. W59C-Memory Lane, music. W51C-Purseome Harmonies. WENR-Blue Frolles [B]. WMAQ-Backstage Wife [N]. WIND-WGES-News.
 3:15-WILL-Music Appreciation hour. WAAE-They 00 [C]. WJJD, WCFL-Basball: Cubs-Pittsburgh. WBBM-Home Front Reporter [C].
 3:15-WIND-Sports Edition. WGES-Uncle Sam, serial. WMAQ-Stella Dallas, serial [N].
 3:30-W59C-Rhythm Matinee. W51C-Dance Maestro. WBBM-News reports. WENR-Beulah Karney program. WMAQ-Lorenzo Jones [N]. WGES-Italian Matinee.
 3:45-WBBM-Mr. Moneybags. WMAQ-Young Wilder Brown [N]. WENR-Off the Record: news. WMBI-Musical Notebook.
 4:00-W59C-On Wings of Song. W51C-Rovine in Music. WMAQ-When a Girl Marries [N]. WENR-The Mystery Chef. WBBM-Paul Gibson program. WIND-News.
 4:15-W59C-Pop concert. WIND-Sports Edition to 5. WENR-The Slogan Saluto. WMAQ-Portia Faces Life [N]. WILL-Music That Lives. WJJD-The Music Reel.
 4:30-WENR-News and Blue Points. WGES-Old Vienna. WMBI-W75C-Hebrew Christians. WMAQ-Just Plain Bill [N]. WBBM-Missus Goes to a Party.
 4:45-WMAQ-Front Page Farrell [N]. WENR-Dick Tracy, serial [B]. WBBM-American Woman [C].
 5:00-W-G-N-Swing It program. W59C-Soft Swing program. W75C, WIND, WCFL-News. W51C-Waltz Musical. WBBM-Clifton Utley, news. WENR-Torry and the Pirates [B]. W75C, WMBI-Haven of Rest. WMAQ-Music at Five. WJJD-Pan-Americana. WAIT-Race results. WILL-Music of the Masters.
 5:15-W-G-N-Tenth Inning: music, news. W59C-Let's Go Latin. W75C-Organ Echoes. WIND-Sports Edition. WCFL-Hit Tunes of the Day. WBBM-Serenade program. WENR-Hop Harrigan, sketch [B]. WMAQ-News: J. Turner, songs.
 5:30-W-G-N-Safety Lesson Time. W59C-Rhythm Cocktails. W51C-High Jinks in Tompo. WENR-Jack Arnetrons [B]. WJJD-News reports. WIND-Star Parade. WCFL-Dance orchestra. WBBM-John Harrington, news. WMAQ-Musical Memories. WMBI-W75C-Gems of Melody.
 5:45-W-G-N-The Supremes [M]. WBNM-The World Today [C]. WENR-Archie Andrews [B]. WIND-Dick Anson, program. WMAQ-Bill Noble, news reports. WCFL-Worklets for Victory. WJJD-Varieties program.
 5:55-WBBM-J. C. Harsch, news [C].

News Broadcasts

MORNING.

7:00-WBBM 8:00-WIND 10:00-WJJD
 7:00-WIND 8:15-WLS 10:00-WIND
 7:00-WCFL 8:45-WIND 10:30-WIND
 7:00-WLS 8:65-WJJD 10:45-WLS
 7:10-W-G-N 9:00-W-G-N 11:00-W-G-N
 7:15-WBBM 9:00-WIND 11:00-WIND
 7:55-WMAQ 9:40-WCFL 11:00-WBBM
 8:00-W-G-N 9:30-WLS 11:30-W-G-N
 8:00-WBBM 10:00-W-G-N 11:30-WMAQ

AFTERNOON.

12:00-WIND 1:00-WIND 4:00-WIND
 12:00-WJJD 1:30-WCFL 5:00-WAAF
 12:00-WCFL 1:45-W-G-N 5:00-WBBM
 12:30-W-G-N 2:00-WIND 5:00-WIND
 12:30-WMAQ 2:00-WBBM 5:25-W-G-N
 12:30-WLS 2:15-WLS 5:30-WJJD
 12:45-WCFL 3:00-WIND 5:45-WBBM
 1:00-WCFL 3:30-WBBM 5:45-WMAQ

EVENING.

6:00-W59C 8:00-WCFL 10:30-W-G-N
 6:00-WIND 8:00-WIND 10:30-WBBM
 6:00-WLS 8:15-W-G-N 10:30-WENR
 6:00-WBBM 8:45-WIND 11:00-W-G-N
 6:00-WMAQ 9:00-WCFL 11:00-WBBM
 6:30-W-G-N 9:00-WIND 11:00-WIND
 6:45-WMAQ 9:00-WENR 12:00-W-G-N
 7:00-W-G-N 8:45-WENR 12:00-WIND
 7:00-WLS 10:00-WCFL 12:00-WBBM
 7:30-WIND 10:00-W-G-N 12:55-WMAQ
 7:55-WBBM 10:00-WIND 1:00-W-G-N
 8:00-W-G-N 10:15-WMAQ 1:00-WIND

EVENING.

6:00-W59C 8:00-WCFL 10:30-W-G-N
 6:00-WIND 8:00-WIND 10:30-WBBM
 6:00-WLS 8:15-W-G-N 10:30-WENR
 6:00-WBBM 8:45-WIND 11:00-W-G-N
 6:00-WMAQ 9:00-WCFL 11:00-WBBM
 6:30-W-G-N 9:00-WIND 11:00-WIND
 6:45-WMAQ 9:00-WENR 12:00-W-G-N
 7:00-W-G-N 8:45-WENR 12:00-WIND
 7:00-WLS 10:00-WCFL 12:00-WBBM
 7:30-WIND 10:00-W-G-N 12:55-WMAQ
 7:55-WBBM 10:00-WIND 1:00-W-G-N
 8:00-W-G-N 10:15-WMAQ 1:00-WIND

EVENING.

6:00-W59C 8:00-WCFL 10:30-W-G-N
 6:00-WIND 8:00-WIND 10:30-WBBM
 6:00-WLS 8:15-W-G-N 10:30-WENR
 6:00-WBBM 8:45-WIND 11:00-W-G-N
 6:00-WMAQ 9:00-WCFL 11:00-WBBM
 6:30-W-G-N 9:00-WIND 11:00-WIND
 6:45-WMAQ 9:00-WENR 12:00-W-G-N
 7:00-W-G-N 8:45-WENR 12:00-WIND
 7:00-WLS 10:00-WCFL 12:00-WBBM
 7:30-WIND 10:00-W-G-N 12:55-WMAQ
 7:55-WBBM 10:00-WIND 1:00-W-G-N
 8:00-W-G-N 10:15-WMAQ 1:00-WIND

EVENING.

6:00-W59C 8:00-WCFL 10:30-W-G-N
 6:00-WIND 8:00-WIND 10:30-WBBM
 6:00-WLS 8:15-W-G-N 10:30-WENR
 6:00-WBBM 8:45-WIND 11:00-W-G-N
 6:00-WMAQ 9:00-WCFL 11:00-WBBM
 6:30-W-G-N 9:00-WIND 11:00-WIND
 6:45-WMAQ 9:00-WENR 12:00-W-G-N
 7:00-W-G-N 8:45-WENR 12:00-WIND
 7:00-WLS 10:00-WCFL 12:00-WBBM
 7:30-WIND 10:00-W-G-N 12:55-WMAQ
 7:55-WBBM 10:00-WIND 1:00-W-G-N
 8:00-W-G-N 10:15-WMAQ 1:00-WIND

EVENING.

6:00-W59C 8:00-WCFL 10:30-W-G-N
 6:00-WIND 8:00-WIND 10:30-WBBM
 6:00-WLS 8:15-W-G-N 10:30-WENR
 6:00-WBBM 8:45-WIND 11:00-W-G-N
 6:00-WMAQ 9:00-WCFL 11:00-WBBM
 6:30-W-G-N 9:00-WIND 11:00-WIND
 6:45-WMAQ 9:00-WENR 12:00-W-G-N
 7:00-W-G-N 8:45-WENR 12:00-WIND
 7:00-WLS 10:00-WCFL 12:00-WBBM
 7:30-WIND 10:00-W-G-N 12:55-WMAQ
 7:55-WBBM 10:00-WIND 1:00-W-G-N
 8:00-W-G-N 10:15-WMAQ 1:00-WIND

EVENING.

6:00-W59C 8:00-WCFL 10:30-W-G-N
 6:00-WIND 8:00-WIND 10:30-WBBM
 6:00-WLS 8:15-W-G-N 10:30-WENR
 6:00-WBBM 8:45-WIND 11:00-W-G-N
 6:00-WMAQ 9:00-WCFL 11:00-WBBM
 6:30-W-G-N 9:00-WIND 11:00-WIND
 6:45-WMAQ 9:00-WENR 12:00-W-G-N
 7:00-W-G-N 8:45-WENR 12:00-WIND
 7:00-WLS 10:00-WCFL 12:00-WBBM
 7:30-WIND 10:00-W-G-N 12:55-WMAQ
 7:55-WBBM 10:00-WIND 1:00-W-G-N
 8:00-W-G-N 10:15-WMAQ 1:00-WIND

EVENING.

6:00-W59C 8:00-WCFL 10:30-W-G-N
 6:00-WIND 8:00-WIND 10:30-WBBM
 6:00-WLS 8:15-W-G-N 10:30-WENR
 6:00-WBBM 8:45-WIND 11:00-W-G-N
 6:00-WMAQ 9:00-WCFL 11:00-WBBM
 6:30-W-G-N 9:00-WIND 11:00-WIND
 6:45-WMAQ 9:00-WENR 12:00-W-G-N
 7:00-W-G-N 8:45-WENR 12:00-WIND
 7:00-WLS 10:00-WCFL 12:00-WBBM
 7:30-WIND 10:00-W-G-N 12:55-WMAQ
 7:55-WBBM 10:00-WIND 1:00-W-G-N
 8:00-W-G-N 10:15-WMAQ 1:00-WIND

EVENING.

6:00-W59C 8:00-WCFL 10:30-W-G-N
 6:00-WIND 8:00-WIND 10:30-WBBM
 6:00-WLS 8:15-W-G-N 10:30-WENR
 6:00-WBBM 8:45-WIND 11:00-W-G-N
 6:00-WMAQ 9:00-WCFL 11:00-WBBM
 6:30-W-G-N 9:00-WIND 11:00-WIND
 6:45-WMAQ 9:00-WENR 12:00-W-G-N
 7:00-W-G-N 8:45-WENR 12:00-WIND
 7:00-WLS 10:00-WCFL 12:00-WBBM
 7:30-WIND 10:00-W-G-N 12:55-WMAQ
 7:55-WBBM 10:00-WIND 1:00-W-G-N
 8:00-W-G-N 10:15-WMAQ 1:00-WIND

EVENING.

6:00-W59C 8:00-WCFL 10:30-W-G-N
 6:00-WIND 8:00-WIND 10:30-WBBM
 6:00-WLS 8:15-W-G-N 10:30-WENR
 6:00-WBBM 8:45-WIND 11:00-W-G-N
 6:00-WMAQ 9:00-WCFL 11:00-WBBM
 6:30-W-G-N 9:00-WIND 11:00-WIND
 6:45-WMAQ 9:00-WENR 12:00-W-G-N
 7:00-W-G-N 8:45-WENR 12:00-WIND
 7:00-WLS 10:00-WCFL 12:00-WBBM
 7:30-WIND 10:00-W-G-N 12:55-WMAQ
 7:55-WBBM 10:00-WIND 1:00-W-G-N
 8:00-W-G-N 10:15-WMAQ 1:00-WIND

EVENING.

6:00-W59C 8:00-WCFL 10:30-W-G-N
 6:00-WIND 8:00-WIND 10:30-WBBM
 6:00-WLS 8:15-W-G-N 10:30-WENR
 6:00-WBBM 8:45-WIND 11:00-W-G-N
 6:00-WMAQ 9:00-WCFL 11:00-WBBM
 6:30-W-G-N 9:00-WIND 11:00-WIND
 6:45-WMAQ 9:00-WENR 12:00-W-G-N
 7:00-W-G-N 8:45-WENR 12:00-WIND
 7:00-WLS 10:00-WCFL 12:00-WBBM
 7:30-WIND 10:00-W-G-N 12:55-WMAQ
 7:55-WBBM 10:00-WIND 1:00-W-G-N
 8:00-W-G-N 10:15-WMAQ 1:00-WIND

EVENING.

6:00-W59C 8:00-WCFL 10:30-W-G-N
 6:00-WIND 8:00-WIND 10:30-WBBM
 6:00-WLS 8:15-W-G-N 10:30-WENR
 6:00-WBBM 8:45-WIND 11:00-W-G-N
 6:00-WMAQ 9:00-WCFL 11:00-WBBM
 6:30-W-G-N 9:00-WIND 11:00-WIND
 6:45-WMAQ 9:00-WENR 12:00-W-G-N
 7:00-W-G-N 8:45-WENR 12:00-WIND
 7:00-WLS 10:00-WCFL 12:00-WBBM
 7:30-WIND 10:00-W-G-N 12:55-WMAQ
 7:55-WBBM 10:00-WIND 1:00-W-G-N
 8:00-W-G-N 10:15-WMAQ 1:00-WIND

EVENING.

6:00-W59C 8:00-WCFL 10:30-W-G-N
 6:00-WIND 8:00-WIND 10:30-WBBM
 6:00-WLS 8:15-W-G-N 10:30-WENR
 6:00-WBBM 8:45-WIND 11:00-W-G-N
 6:00-WMAQ 9:00-WCFL 11:00-WBBM
 6:30-W-G-N 9:00-WIND 11:00-WIND
 6:45-WMAQ 9:00-WENR 12:00-W-G-N
 7:00-W-G-N 8:45-WENR 12:00-WIND
 7:00-WLS 10:00-WCFL 12:00-WBBM
 7:30-WIND 10:00-W-G-N 12:55-WMAQ
 7:55-WBBM 10:00-WIND 1:00-W-G-N
 8:00-W-G-N 10:15-WMAQ 1:00-WIND

ON SHORT WAVES

LONDON.
 The following short wave programs may be heard over GSC, 9.58 meg., 31.32 m.:
 GRG, 11.68 meg., 25.69 m.:
 4:15 p. m., London Calling; 4:30, Front Line Family; 4:45, News; 5:45, News; 6:30, National Day; 6:45, Prayers; 7:30, Brian Speaks; 8:06, news; 9:45, news and commentary; 10, Radio Newsreel; 11:30, news.