

Table with columns for station call letters and program names. Includes WFLA, WFLB, WFLC, etc.

WIBA Sunday Morning schedule listing programs like 'The Morning Parade' and 'World News Edition'.

WHA Sunday Morning schedule listing programs like 'The Morning Parade' and 'World News Edition'.

WHA Sunday Afternoon schedule listing programs like 'The Morning Parade' and 'World News Edition'.

News Broadcasts Sunday schedule listing programs like 'The Morning Parade' and 'World News Edition'.

Sports Reviews Sunday schedule listing programs like 'The Morning Parade' and 'World News Edition'.

Other Stations Sunday Morning schedule listing programs like 'The Morning Parade' and 'World News Edition'.

Other Stations Sunday Afternoon schedule listing programs like 'The Morning Parade' and 'World News Edition'.

Other Stations Sunday Evening schedule listing programs like 'The Morning Parade' and 'World News Edition'.

Other Stations Sunday Night schedule listing programs like 'The Morning Parade' and 'World News Edition'.

Other Stations Sunday Late Evening schedule listing programs like 'The Morning Parade' and 'World News Edition'.

Other Stations Sunday Very Late Evening schedule listing programs like 'The Morning Parade' and 'World News Edition'.

Hour of Charm, News Parade to Be Featured on WIBA Today

Two programs will make their debuts on WIBA today - World News Parade at 2:15 p. m. and the Hour of Charm at 9 p. m.

The former will be a news digest featuring Upton Close, a guest commentator - this time Lowell Thomas - and occasional spot news pickups from other parts of the world.

Tonight's Hour of Charm will be the 302nd broadcast of the series, but the first on WIBA. It will feature Phil Spitalny and his all-girl band.

Other attractions today: Special Events 12:30 p. m. - Lord Halifax (WMAQ); "War and Faith."

5:30 p. m. - Radios for Victory (WHA); officers and men, including 12-piece orchestra, from Army Air Forces Technical school.

Religion 9 a. m. - Highlights of the Bible (WMAQ); "Adding a New Dimension to Life."

Discussion 10 a. m. - Reviewing Stand (WGN); "Military Morale."

Drama 5:30 p. m. - The Great Gilder-sleeve (WIBA); "Love Thy Neighbor."

Music 2 p. m. - Columbia Symphony (WBBM); Howard Barlow, conductor; "Symphony," Hermann;

Miscellaneous 2:30 p. m. - Army Hour 7:45 Gabriel Heatter, WGN; 8:00 Digest-WBBM WCCO KMOX;

3:00 Merry-go-Round-WMAQ WTMJ; 8:00 Revival Hour-WIBU WIND; 8:00 News and Music-WMAQ;

8:00 Walter Winchell-WENR WLW; 8:15 Parker Family-WENR WLW; 8:30 Jimmie Fidler-WENR WLW;

Grid Broadcasts Open in Earnest This Saturday

Badger-Irish Game Goes on Air at 1:45

Radio's football season will open in earnest this week, with five games scheduled for Saturday - Wisconsin-Notre Dame, Minnesota-Pittsburgh, Michigan-Great Lakes, Fordham-Purdue, and St. Louis-Missouri.

Here are the week's leading attractions, by calendar and clock: 11:30 a. m. - American Legion: Donald M. Nelson-WCFB.

7 p. m. - Cavalade of America: "Eagle to Britain"-WMAQ. 8 p. m. - Great Artists: Lawrence Tibbett-WIBA.

8 p. m. - Walter Pidgeon, Maureen O'Hara, and Donald Crisp in "How Green Was My Valley"-WBBM. 8:30 p. m. - Dr. I. Q. New to WIBA.

8:30 p. m. - Spotlight Bands: new series; Harry James-WENR. 12:30 p. m. - Junior lamb and pig show-WHA.

6:30 p. m. - American Melody Hour: Frank Munn-WBBM. 7:30 p. m. - Dr. Preston Bradley: new series-WGN.

7:30 p. m. - Theater of the Air: new series with Henry Hull-WGN. 8:30 p. m. - Spotlight Bands: Horace Heidt-WENR.

8 p. m. - Great Moments in Music: "Fasciacci" excerpts-WBBM. 8:30 p. m. - Raymond Clapper replaces Raymond Gram Swing-WGN.

7 p. m. - Kate Smith: preview of "The War Against Mrs. Hadley"-WBBM. 7:15 p. m. - Dinah Shore: new series-WLS.

9 p. m. - Playhouse: Orson Welles-WBBM. 9 p. m. - Boxing: Chalky Wright vs. Lulu Constantine-WGN.

11 a. m. - Theater of Today: Madeline Carroll-WBBM. 8:30 p. m. - Football: Minnesota vs. Pittsburgh-WCCO.

1:45 p. m. - Football: Wisconsin vs. Notre Dame-WIBA, WTMJ, WIBU (on WHA at 2). 1:45 p. m. - Football: Michigan vs. Great Lakes-WBBM.

News Broadcasts

Table with columns for time, station, and program name. Includes A.M. MONDAY, 6:00 WIND WMAQ, 6:00 WBBM WLW, etc.

Table with columns for time, station, and program name. Includes P.M. MONDAY, 2:15 WJLD WIND, 2:30 WJLD WIND, etc.

Table with columns for time, station, and program name. Includes A.M. MONDAY, 6:24 KMOX, 6:30 WLS, etc.

Table with columns for time, station, and program name. Includes P.M. MONDAY, 1:00 WJLD, 1:15 WJLD, etc.

Table with columns for time, station, and program name. Includes 6:00 Sunrise Salute-WBBM, 6:00 Sunrise Special-WTMJ, etc.

Table with columns for time, station, and program name. Includes 6:15 Morning Devotions-WLS, 6:15 Farm News and Views-WMAQ, etc.

Table with columns for time, station, and program name. Includes 6:30 Family Bible League-WJLD, 6:30 Norman Ross-WMAQ, etc.

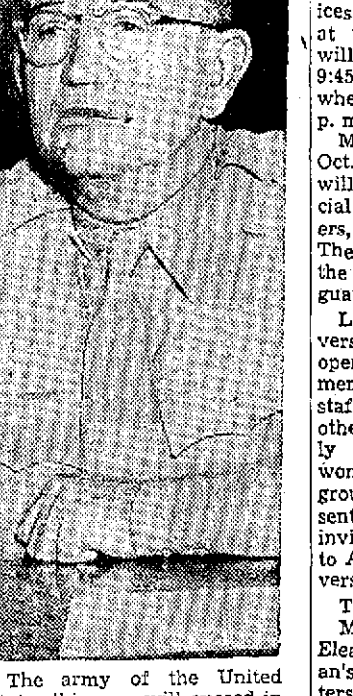
Table with columns for time, station, and program name. Includes 6:30 Whisking Well-WBBM, 6:30 Service Men's Stories-WMAQ, etc.

Table with columns for time, station, and program name. Includes 6:30 Chapel in the Valley-WGN, 6:45 Hymns of All Churches-WBBM, etc.

Table with columns for time, station, and program name. Includes 6:45 The Book of the Week-WCCO, 6:45 Dealer in Dreams-WGN, etc.

Table with columns for time, station, and program name. Includes 6:50 Bess Johnson-WMAQ WTMJ, 6:50 Stories of America-WBBM, etc.

Sees Bigger Army



The army of the United States this year will exceed in number the 4,500,000 goal set, according to Brig. Gen. Lewis B. Hershey, selective service administrator.

Hershey is shown above as he appeared before the house defense migration committee.

1:00 Light of the World-WMAQ WJLD; 1:15 Singin' Sam-WJLD; 1:15 Lonely Woman-WMAQ; 1:15 Joyce Jordan-WBBM WCCO; 1:15 Singin' Sam-WJLD; 1:15 Lonely Woman-WMAQ; 1:15 Joyce Jordan-WBBM WCCO; 1:15 Singin' Sam-WJLD; 1:15 Lonely Woman-WMAQ; 1:15 Joyce Jordan-WBBM WCCO.

1:15 Nelson Olmsted-WMAQ; 1:15 Buddy Franklin Orch.-WENR; 1:15 Art Jarrett Orch.-WGN; 1:15 Freddie Ebdene Orch.-WMAQ; 1:15 Gladys Swarthout Orch.-WENR; 1:15 Moon River-WLW; 1:15 Eddie Oliver Orch.-WBBM; 1:15 Nita Watch to Go-WGN; 1:15 Les Brown Orch.-WGN; 1:15 John Kirby Orch.-WMAQ; 1:15 Music You Want-WENR; 1:15 Count Basie Orch.-WGN; 1:15 Bud Freeman Orch.-WENR; 1:15 Arnie Barnett Orch.-WBBM; 1:15 Lefty Darcy-WMAQ; 1:15 Lew Diamond Orch.-WGN.

1:15 Jerry Wald Orch.-WBBM; 1:15 Nelson Olmsted-WMAQ; 1:15 Buddy Franklin Orch.-WENR; 1:15 Art Jarrett Orch.-WGN; 1:15 Freddie Ebdene Orch.-WMAQ; 1:15 Gladys Swarthout Orch.-WENR; 1:15 Moon River-WLW; 1:15 Eddie Oliver Orch.-WBBM; 1:15 Nita Watch to Go-WGN; 1:15 Les Brown Orch.-WGN; 1:15 John Kirby Orch.-WMAQ; 1:15 Music You Want-WENR; 1:15 Count Basie Orch.-WGN; 1:15 Bud Freeman Orch.-WENR; 1:15 Arnie Barnett Orch.-WBBM; 1:15 Lefty Darcy-WMAQ; 1:15 Lew Diamond Orch.-WGN.

1:15 Nelson Olmsted-WMAQ; 1:15 Buddy Franklin Orch.-WENR; 1:15 Art Jarrett Orch.-WGN; 1:15 Freddie Ebdene Orch.-WMAQ; 1:15 Gladys Swarthout Orch.-WENR; 1:15 Moon River-WLW; 1:15 Eddie Oliver Orch.-WBBM; 1:15 Nita Watch to Go-WGN; 1:15 Les Brown Orch.-WGN; 1:15 John Kirby Orch.-WMAQ; 1:15 Music You Want-WENR; 1:15 Count Basie Orch.-WGN; 1:15 Bud Freeman Orch.-WENR; 1:15 Arnie Barnett Orch.-WBBM; 1:15 Lefty Darcy-WMAQ; 1:15 Lew Diamond Orch.-WGN.

1:15 Nelson Olmsted-WMAQ; 1:15 Buddy Franklin Orch.-WENR; 1:15 Art Jarrett Orch.-WGN; 1:15 Freddie Ebdene Orch.-WMAQ; 1:15 Gladys Swarthout Orch.-WENR; 1:15 Moon River-WLW; 1:15 Eddie Oliver Orch.-WBBM; 1:15 Nita Watch to Go-WGN; 1:15 Les Brown Orch.-WGN; 1:15 John Kirby Orch.-WMAQ; 1:15 Music You Want-WENR; 1:15 Count Basie Orch.-WGN; 1:15 Bud Freeman Orch.-WENR; 1:15 Arnie Barnett Orch.-WBBM; 1:15 Lefty Darcy-WMAQ; 1:15 Lew Diamond Orch.-WGN.

1:15 Nelson Olmsted-WMAQ; 1:15 Buddy Franklin Orch.-WENR; 1:15 Art Jarrett Orch.-WGN; 1:15 Freddie Ebdene Orch.-WMAQ; 1:15 Gladys Swarthout Orch.-WENR; 1:15 Moon River-WLW; 1:15 Eddie Oliver Orch.-WBBM; 1:15 Nita Watch to Go-WGN; 1:15 Les Brown Orch.-WGN; 1:15 John Kirby Orch.-WMAQ; 1:15 Music You Want-WENR; 1:15 Count Basie Orch.-WGN; 1:15 Bud Freeman Orch.-WENR; 1:15 Arnie Barnett Orch.-WBBM; 1:15 Lefty Darcy-WMAQ; 1:15 Lew Diamond Orch.-WGN.

1:15 Nelson Olmsted-WMAQ; 1:15 Buddy Franklin Orch.-WENR; 1:15 Art Jarrett Orch.-WGN; 1:15 Freddie Ebdene Orch.-WMAQ; 1:15 Gladys Swarthout Orch.-WENR; 1:15 Moon River-WLW; 1:15 Eddie Oliver Orch.-WBBM; 1:15 Nita Watch to Go-WGN; 1:15 Les Brown Orch.-WGN; 1:15 John Kirby Orch.-WMAQ; 1:15 Music You Want-WENR; 1:15 Count Basie Orch.-WGN; 1:15 Bud Freeman Orch.-WENR; 1:15 Arnie Barnett Orch.-WBBM; 1:15 Lefty Darcy-WMAQ; 1:15 Lew Diamond Orch.-WGN.

1:15 Nelson Olmsted-WMAQ; 1:15 Buddy Franklin Orch.-WENR; 1:15 Art Jarrett Orch.-WGN; 1:15 Freddie Ebdene Orch.-WMAQ; 1:15 Gladys Swarthout Orch.-WENR; 1:15 Moon River-WLW; 1:15 Eddie Oliver Orch.-WBBM; 1:15 Nita Watch to Go-WGN; 1:15 Les Brown Orch.-WGN; 1:15 John Kirby Orch.-WMAQ; 1:15 Music You Want-WENR; 1:15 Count Basie Orch.-WGN; 1:15 Bud Freeman Orch.-WENR; 1:15 Arnie Barnett Orch.-WBBM; 1:15 Lefty Darcy-WMAQ; 1:15 Lew Diamond Orch.-WGN.

War Center to Be Open to 9:45 P. M.

Beginning this week, the services of the war information center at the University of Wisconsin will be open to the public until 9:45 p. m. daily except Saturday, when the closing hour will be 4 p. m.

Monday and continuing through Oct. 10, American armed forces will figure as the subject for special emphasis in the exhibits, posters, and literature to be shown. The phases to be covered include the army, navy, marines, and coast guard.

Located in room 123 of the University library, the center will open each day at 8 a. m. with a member of the extension division staff on duty until 8:30 a. m. At other hours it will be staffed mainly by volunteers representing women's organizations. Women's groups which have not been represented among the attendants are invited to participate by applying to Almere L. Scott, telephone university 175.

The week's schedule follows: Monday, 8:30 a. m. 12:30 Mrs. Eleanor Hibbard, Catholic Women's Eastern Star; 4-6:30, Student war council (to be assigned); 6:30-9:45, Mrs. H. S. Richards, Madison Woman's Club.

Tuesday, 8:30-12:30, Mrs. Edith Spensley, Century Club; 12:30-4, Junior division, University League (to be assigned); 4-6:30, student war council; 6:30-9:45, Almere Scott, League of Women Voters.

Wednesday, 8:30-12:30, Jessie Uptfield, Women's International League for Peace and Freedom; 12:30-4, Mrs. Spensley, Council of Church Women; 4-6:30, student war council; 6:30-9:45, Mrs. Pearl Guynes, Zonta.

Thursday, 8:30-12:30, Mrs. Jo 11:35 Jerry Wald Orch.-WBBM; 1:15 Nelson Olmsted-WMAQ; 1:15 Buddy Franklin Orch.-WENR; 1:15 Art Jarrett Orch.-WGN; 1:15 Freddie Ebdene Orch.-WMAQ; 1:15 Gladys Swarthout Orch.-WENR; 1:15 Moon River-WLW; 1:15 Eddie Oliver Orch.-WBBM; 1:15 Nita Watch to Go-WGN; 1:15 Les Brown Orch.-WGN; 1:15 John Kirby Orch.-WMAQ; 1:15 Music You Want-WENR; 1:15 Count Basie Orch.-WGN; 1:15 Bud Freeman Orch.-WENR; 1:15 Arnie Barnett Orch.-WBBM; 1:15 Lefty Darcy-WMAQ; 1:15 Lew Diamond Orch.-WGN.

1:15 Nelson Olmsted-WMAQ; 1:15 Buddy Franklin Orch.-WENR; 1:15 Art Jarrett Orch.-WGN; 1:15 Freddie Ebdene Orch.-WMAQ; 1:15 Gladys Swarthout Orch.-WENR; 1:15 Moon River-WLW; 1:15 Eddie Oliver Orch.-WBBM; 1:15 Nita Watch to Go-WGN; 1:15 Les Brown Orch.-WGN; 1:15 John Kirby Orch.-WMAQ; 1:15 Music You Want-WENR; 1:15 Count Basie Orch.-WGN; 1:15 Bud Freeman Orch.-WENR; 1:15 Arnie Barnett Orch.-WBBM; 1:15 Lefty Darcy-WMAQ; 1:15 Lew Diamond Orch.-WGN.

1:15 Nelson Olmsted-WMAQ; 1:15 Buddy Franklin Orch.-WENR; 1:15 Art Jarrett Orch.-WGN; 1:15 Freddie Ebdene Orch.-WMAQ; 1:15 Gladys Swarthout Orch.-WENR; 1:15 Moon River-WLW; 1:15 Eddie Oliver Orch.-WBBM; 1:15 Nita Watch to Go-WGN; 1:15 Les Brown Orch.-WGN; 1:15 John Kirby Orch.-WMAQ; 1:15 Music You Want-WENR; 1:15 Count Basie Orch.-WGN; 1:15 Bud Freeman Orch.-WENR; 1:15 Arnie Barnett Orch.-WBBM; 1:15 Lefty Darcy-WMAQ; 1:15 Lew Diamond Orch.-WGN.

1:15 Nelson Olmsted-WMAQ; 1:15 Buddy Franklin Orch.-WENR; 1:15 Art Jarrett Orch.-WGN; 1:15 Freddie Ebdene Orch.-WMAQ; 1:15 Gladys Swarthout Orch.-WENR; 1:15 Moon River-WLW; 1:15 Eddie Oliver Orch.-WBBM; 1:15 Nita Watch to Go-WGN; 1:15 Les Brown Orch.-WGN; 1:15 John Kirby Orch.-WMAQ; 1:15 Music You Want-WENR; 1:15 Count Basie Orch.-WGN; 1:15 Bud Freeman Orch.-WENR; 1:15 Arnie Barnett Orch.-WBBM; 1:15 Lefty Darcy-WMAQ; 1:15 Lew Diamond Orch.-WGN.

1:15 Nelson Olmsted-WMAQ; 1:15 Buddy Franklin Orch.-WENR; 1:15 Art Jarrett Orch.-WGN; 1:15 Freddie Ebdene Orch.-WMAQ; 1:15 Gladys Swarthout Orch.-WENR; 1:15 Moon River-WLW; 1:15 Eddie Oliver Orch.-WBBM; 1:15 Nita Watch to Go-WGN; 1:15 Les Brown Orch.-WGN; 1:15 John Kirby Orch.-WMAQ; 1:15 Music You Want-WENR; 1:15 Count Basie Orch.-WGN; 1:15 Bud Freeman Orch.-WENR; 1:15 Arnie Barnett Orch.-WBBM; 1:15 Lefty Darcy-WMAQ; 1:15 Lew Diamond Orch.-WGN.

1:15 Nelson Olmsted-WMAQ; 1:15 Buddy Franklin Orch.-WENR; 1:15 Art Jarrett Orch.-WGN; 1:15 Freddie Ebdene Orch.-WMAQ; 1:15 Gladys Swarthout Orch.-WENR; 1:15 Moon River-WLW; 1:15 Eddie Oliver Orch.-WBBM; 1:15 Nita Watch to Go-WGN; 1:15 Les Brown Orch.-WGN; 1:15 John Kirby Orch.-WMAQ; 1:15 Music You Want-WENR; 1:15 Count Basie Orch.-WGN; 1:15 Bud Freeman Orch.-WENR; 1:15 Arnie Barnett Orch.-WBBM; 1:15 Lefty Darcy-WMAQ; 1:15 Lew Diamond Orch.-WGN.

Firms Put \$100,000 in War Bonds

More than \$100,000 worth of war bonds have been sold by Madison theater managers in the past two days to Madison firms and business houses which will get tickets to the premiere of "Wake Island" at the Capitol theater at 8:15 p. m.

John Schamberg, Art Desormeaux, and Melvior Conner, managers working on the bond sale reported Saturday that most of the firms are turning their complimentary tickets over to employees for the premiere.

Tickets are given with each \$100 war bond purchased at any official bond issuing agency or at any Madison theater, they announced.

BARABOO MAN ENLISTS Mildred Nelson Swanson, 23, of 222 Seventh st., Baraboo, enlisted at the navy recruiting station at Milwaukee Thursday, the station announced Saturday.

HEAR BETTER New Aid for the Deaf VACUUM TUBE HEARING AIDS The Maico Aco-A Midget hearing aid as powerful as a giant. Microphone weighs only two ounces. For more severe cases-the Maico or distance, more clarity, greater interpretation of voice. Fitted in co-operation with your own ear specialist. Write for free booklet. MAICO MIDWEST DIST. BADGER 6513 2320 Kendall Ave. Madison

THE ACID TEST OF EXECUTORSHIP The acid test of Executorship lies in the Executor's ability to carry out the settlement of an estate in strict accordance with the terms of the will. Not until this has been accomplished, without unnecessary loss of time or money, has the Executor fulfilled his obligations.

Madison Trust's record of trustworthy estate service speaks for itself. Chartered by law Madison Trust is a permanent institution for the settlement, administration and conservation of estates. We invite you and your attorney to consult with our Trust Officer on the best means of providing for your family's future welfare.

MADISON TRUST CO. 23 W. MAIN ST. Member Federal Deposit Ins. Corp. BUY U. S. WAR BONDS AND STAMPS

CHRISTMAS GIFTS Men in the Service will Appreciate

And How to Mail Them Will Be Found in the... 'GIFTS FOR SERVICE MEN EDITION' Sunday, September 27th

MAKE UP YOUR GIFT LIST NOW! MAIL EARLY

Wisconsin State Journal

THE McCLARY CLINIC WORLD'S LARGEST INSTITUTION specializing in RECTAL, COLON and ASSOCIATED ILLMENTS FREE BOOK - ON HEALTH Do you suffer pain, torture and broken health of neglected Piles, Fistula, or related rectal and colon ailments? Write today for 122-page FREE BOOK. Learn facts, The McClary Clinic, D024 Elms Blvd., Excelsior Springs, Missouri-Adv.

LOW COST EMERGENCY AUTO RATES Save Money by Calling GIFFORD 4700 Insure in an "A" (excellent) rated company writing NON-ASSESSABLE policies. Farmers' Mutual Automobile Insurance Co. MADISON WISCONSIN REPRESENTED BY WITWER, KALBSKOPF & WEBSTER, Inc. 10 W. JOHNSON ST., MADISON, WIS.

She Woman for You: She Has All Answers SEATTLE-U.P.-A girl posted bail for a traffic violation today and was told to fill out a card giving her name and the make and model of her automobile. After she left, Harry Sutton, head of the traffic bureau, picked up the card and read: Make-female Type-blonde Year-21. Buy U. S. War Bonds and Stamps

Provide Better Light... for Better Sight Better light in the homes is of great importance to everyone-old or young. To men and women it means greater eye comfort for reading and working around the house at night. To school children, it means the protection of priceless eyesight, the prevention of eyestrain, easier, quicker, more thorough reading and studying. I.E.S. Better Light lamps make reading and working easier and preserve eye sight. They give a soft, evenly diffused light and eliminate deep shadows and harsh glare. The important thing is that you equip your home with I.E.S. lamps-lamps which are scientifically designed to provide the right amount of light for every seeing task. Stop in soon and select several of these lamps from the large assortment on display in our showroom. MADISON GAS & ELECTRIC CO. 100 N. FAIRCHILD ST. PHONE BADGER 4400 "Quality Merchandise at Reasonable Prices"

WISCONSIN STATE JOURNAL