

# Hawk Quiz Program Will Broadcast From Notre Dame

### Naval Cadets And Dancers At Annual Prom To Face Microphone; Abe Lyman Offers Old Favorites On Waltz Time

For the first time under his present sponsorship, Bob Hawk's How Am I Doin' quiz will change locale Friday at 7:30 p. m. over WABC, to come from Rockne Memorial hall in South Bend, Ind.

Reason for the move: Orchestra leader Vaughn Monroe has been signed to play the annual Notre Dame prom so Hawk's sponsor decided to move the entire show there. Contestants on the 7:30 show will be Naval cadets but during the west coast repeat at 10:30 p. m., contestants will be N. D. prom goers and their gals.

Over 1,000 stalwart youths — the flower of old Europe before it was plucked bare by Hitler and his legions — will be the guests of "The Ontario Show" to be heard over WJZ Friday, at 7:00 p. m. Acting as personal hostess to the young men, who are student fliers under the Canadian government training program, will be lovely Madeleine Carroll.

An international anthem composed by Lyn Murray and Stephen Vincent Benet, poet and novelist, will be introduced during the broadcast. Guest star will be Alec Templeton, celebrated pianist, and Col. Lemuel Q. Stoppang in an unreasonable facsimile of his insane self, will confuse the atmosphere as usual.

A trio of three-quarter time perennials highlights "Waltz Time" Friday, at 9 p. m. over WEAF. Abe Lyman's orchestra offers Logan's "Missouri Waltz," Strauss' "Kiss Waltz" and "Dolores" by Waldteufel.

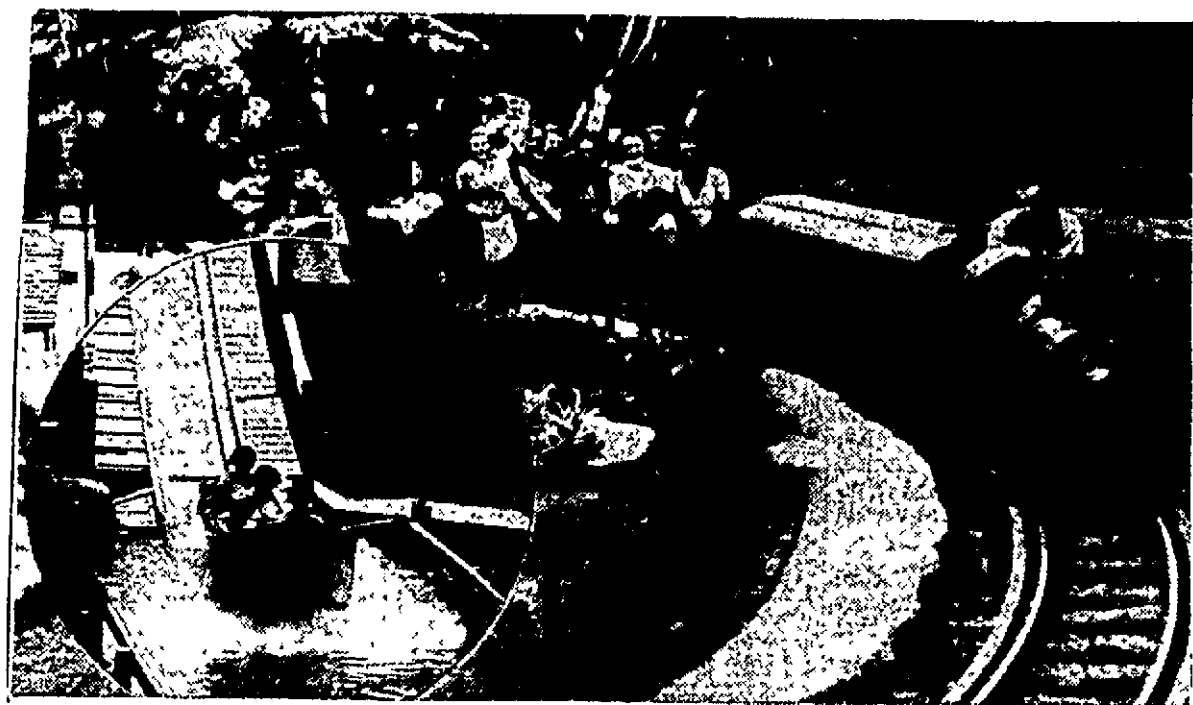
Songs from the plays and operas of Noel Coward get featured billing on the "Cities Service Concert" Friday, at 8 p. m. over WEAF. Lucille Manners, Ross Graham and the ensemble under Frank Blackler will dance "Little Lady" and "Room With a View" from "This Year of Grace"; "Zigeuner" and "I'll See You Again" from the score of "Bitter Sweet," and "Someday I'll Find You" from "Private Lives."

Eric Knight, creator of the Flying Yorkshireman, will walk out on the pigs, chickens and

FRIDAY, APRIL 24  
Eastern War Time P. M.—Subtract One Hour for CWT, 2 Hrs. for MWT.

- 6:00—(Alterations in programs as listed due entirely to changes by networks)
- 6:00—Frank Blackler's "Dance"—and Chicago Dance Music—30 mins.—blue
- 6:30—Edw. C. Hill's Comment—cbs—basic
- 6:35—Miss America and Her Song—cbs—basic
- 6:40—Ted Husing's Sports—cbs—basic
- 6:45—Melodie Stump—cbs—basic
- 6:50—Hedda Hopper, Hollywood—cbs—basic
- 6:55—The Southern Serenade—cbs—basic
- 7:00—Friedman's Review—cbs—basic
- 7:00—Ted Steele's Studio Club—cbs—basic
- 7:05—Lum and Abner of Pine Ridge—cbs—basic
- 7:10—Frank Parker's "Dance"—and Southern Serenade Cont'd—cbs—basic
- 7:15—Jack Armstrong's report—cbs—basic
- 7:20—World War News—cbs—basic
- 7:25—Lowell Thomas on News—blue—basic
- 7:30—The Escorts from Chicago—blue—basic
- 7:35—The First Nighter—cbs—basic
- 7:40—Captain Midnight repeat—cbs—basic
- 7:45—Ered Waring's Time—cbs—basic
- 7:50—Dancing Music—cbs—basic
- 7:55—Abe Lyman's "Waltz Time"—cbs—basic
- 8:00—Luncheon Drama—cbs—basic
- 8:05—Bert Wheeler, Herb Marshall—cbs—basic
- 8:10—Cal Timney Comment on War—cbs—basic
- 8:15—What Price Victory—cbs—basic
- 8:20—Information for Quits—cbs—basic
- 8:25—Meet Your Navy, Var'ty Show—cbs—basic
- 8:30—Songs for Marching Men, Ore.—cbs—basic
- 8:35—Einer Davis and Comment—cbs—basic
- 8:40—Abe Lyman's "Waltz Time"—cbs—basic
- 8:45—March of Time, News Dramas—cbs—basic
- 8:50—The Friday Night Playhouse—cbs—basic
- 8:55—Gabriel Heatter Speaking—cbs—basic
- 9:00—Analysis of Propaganda—cbs—basic
- 9:05—Celebrity Theater with Guests—cbs—basic
- 9:10—The First Nighter Drama—cbs—basic
- 9:15—Spotlight Bands, Dance Music—cbs—basic
- 9:20—Miss Adelaide and Chatter—cbs—basic
- 9:25—Glenn Miller's "Five Miles—cbs—basic
- 9:30—People Are Funny, a Quiz—cbs—basic
- 9:35—Ella Maxwell and Party Line—cbs—basic
- 9:40—Glenn Miller Orchestra Time—cbs—basic
- 9:45—Cedric Foster's War Comment—cbs—basic
- 9:50—First Piano Quartet Concert—cbs—basic
- 9:55—Jerry Wayne's Song Program—cbs—basic
- 10:00—Dance Orchestra for 15 mins.—cbs—basic
- 10:05—Night of the Stars—cbs—basic
- 10:10—Morgan Beatty War Comment—cbs—basic
- 10:15—Olga Coelho, Bert Ives Song—cbs—basic
- 10:20—The Franklyn Program—cbs—basic
- 10:25—Billy Keaton Show of Varieties—cbs—basic
- 10:30—This Is Sharon with Songs—cbs—basic
- 10:35—Fred Waring's repeat—cbs—basic
- 10:40—News for 15 mins.—cbs—basic
- 10:45—Fred Waring's repeat—cbs—basic
- 10:50—Dance, Song, News (3 hrs.)—cbs—basic
- 10:55—Late Variety & News—cbs—basic

# FUN AT PARK AWAITS MIBS CHAMP



Fun! Thrills! Speed! Everything a feller could wish is wrapped up and waiting for some lucky Lima boy or girl, now playing in the city marbles tournament.

The lucky Lima winner, along with more than two score champs from other cities, will compete in the Western Finals at Cleveland, O., June 14-18.

And high on the entertainment program, according to Paul Schoenlein, chairman of the Lions club's marbles tournament committee which is sponsoring the city tournament, is an afternoon at famed Euclid Beach Park, on the shores of Lake Erie. Here the mibs champs will rule supreme. They'll ride the shoot-the-shoots and railroad train, pictured above. They'll try the roller coaster, the whip, the dodgem, and the dozen other thrill-packed rides and amusement devices waiting for them.

# COUNTY FUNDS DISBURSED TO SUB-DIVISIONS

### \$803,353 Being Divided Under Realty And Utility Tax Legislation

Political subdivisions of Allen county are in the process of receiving their share of the \$803,353.72 distributed under the February settlement of real estate taxes for the first half of 1941, closed last month.

The distribution was made under the direction of County Auditor Floyd B. Griffin and was prepared by Deputy Auditor Lewis E. Zimmer.

Delinquencies over the county were cut down some 18.55 per cent, the figures showed. On Feb. 1, 1942, there was \$482,225.69 in delinquencies which were cut \$89,491.11 to \$392,734.58 in the county.

Lima delinquencies 15.8 per cent from \$173,589.62 on Feb. 1 to \$146,156.79, a difference of \$27,432.83.

Of the total distribution of \$803,353.72 the county received \$207,373.09; school districts got \$322,316.63; cities and villages \$254,443.26 and townships \$19,220.74.

The Allen county general fund benefited to the extent of \$132,164.50, the bond retirement fund \$73,771.13 and sewer maintenance \$1,436.46.

The distribution was made to school districts as follows:

- Bluffton \$21,071.93; Beavertown \$5,081.82; Cairo \$4,127.24; Sugar Creek \$6,041.73; Landeck rural \$706.43; Delphos \$14,820; Spencer \$9,558.38; Elida \$14,761.73; Bath-up \$11,264.31; Lafayette-Jackson \$9,991.93; Auglaize-up \$5,919.64; Perry-up \$9,646.32; Shawnee-up \$16,493.72; Lima city \$189,336.81.

Foreign school districts: Putnam-co-Riley-tp \$286.66; Columbus Grove \$3,141.20; Auglaize-co-Waynesfield \$57.70.

Villages and cities received: Bluffton \$4,015.23; Beavertown

### LODGE MEETS FRIDAY

DELPHOS, April 24 — Degree work will be put on Friday night by the degree team of Okonony lodge in Odd Fellows hall.

### HACKENBERGER'S

N. W. Cor. Main and Kibby

- Tomatoes Fresh, lb. 19c
- Lemons Large Size .. Doz. 29c
- DOLES
- Pineapple No. 2 32c
- NO. 2 CANS
- Grapefruit 2 for 25c
- STRAWBERRIES
- Veal Chops .. lb. 28c
- Veal Steak .. lb. 39c
- Pork Roast Loin lb 32c
- Boiling Beef .. lb. 17c
- Chuck Roasts lb. 28c
- Hamburger .. lb. 21c
- Lard ..... 2 lb. 29c
- Milk ..... 4 cans 31c
- Coffee Town Talk .. lb. 21c
- T-Bone Steak .. lb. 37c
- Loin Steak .... lb. 37c
- Swiss Steak ..lb. 37c

### KEN MILLER'S

Food Market  
208 S. Main St.  
We Deliver Call 48871

- MILLERS CORN
- FLAKES 2 Pkgs. 17c
- SWEETHEART SOAP 4 For 23c
- TALL CANS
- MILK ... 3 For 25c
- DEERWOOD No. 2 45c
- Apricots 2 2 1/2 Cans
- Deerwood TOMATO
- JUICE 46 Oz. 23c
- Our Own Fresh Ground COFFEE .....Lb. 25c
- Harvest Moon SALAD DRESSING ..Qt. 37c
- MILLERS WHEAT FLAKES AND CEREAL BOWL 2 For 25c
- CREAM STYLE CORN .... 2 Cans 19c
- FRUIT
- COCKTAIL No. 2 1/2 Cans 31c

### RENZ'S

CHOCOLATE NUT FUDGE  
Large dark layers. Fudge icing topped with nut meats ..... 33c

### HOEGNER & CANTIENY

PRE-COOKED HAMS  
Finest For Flavor

# Today's War Moves

By LOUIS F. KEEMLE (of The United Press Wire Desk)

The combination of the British air offensive in Western Europe and the spreading spirit of revolt in France are becoming increasingly important in the war against Hitler as the Fuehrer prepares for his supreme test in Russia.

The Russian campaign entered its eleventh month today with the initiative still in the hands of the Russians, although there was something of a lull in the fighting because of weather conditions. Spring thaws have mired a large part of the battle front to such an extent that it appeared probable a general German offensive would not start for about three weeks.

When it does start, it is quite likely that the British will intensify their heavy air attacks on the occupied countries and the German industrial region. The command raids, another of which was carried out as a test on Boulogne yesterday, are expected to be increased.

Whether a full scale invasion will be attempted is highly problematical, but it is always a possibility, and it is plainly getting on Hitler's nerves. Coupled with this is the tension in France, which has been intensified by Hitler's imposition of the Laval regime on the people.

The mounting toll of executions indicates that Hitler is out to crush the spirit of the French. But these reprisals are likely to defeat their purpose and create a feeling of hopeless despair of ever being free again until Hitler is crushed. This condition would make it necessary for Hitler not only to maintain all the armed forces he already has in France, but perhaps to increase them.

British aerial and land activity has the same effect. Most important for Russia is the number of combat planes and pilots Hitler is compelled to keep in western Europe and away from the eastern front. Whether Hitler has lost air superiority over Russia is only a matter of speculation, although the Russians say he has.

The point is, if Hitler starts his big offensive with an air force inferior to the Russians, he is under a severe handicap at the very beginning. It is a handicap that did not exist when Hitler made his crushing advances in the earlier months of the war.

Hitler's air losses in the winter campaign undoubtedly have been heavy, although there is nothing to base an estimate on except Russian figures, which are so high as

# FIRE-FIGHTING CAR IS GIVEN FIRST TEST

BOSTON, April 24—(UP)— Equipped with modern fire bomb fighting apparatus, the nation's first defense railroad car stands on a siding here, ready to speed to any disaster.

The unit already has passed a test demonstration in nearby Lynn, where a test fire was set on a dock. It took the car personnel only 41 minutes to cover the 15 miles to the blaze, set up equipment, and begin pouring water on the burning building.

The car carries two 500-gallon-per-minute pumps, six hose lines, extinguishers and miscellaneous auxiliary apparatus including first-aid kits.

Foreign school districts: Putnam-co-Riley-tp \$286.66; Columbus Grove \$3,141.20; Auglaize-co-Waynesfield \$57.70.

Villages and cities received: Bluffton \$4,015.23; Beavertown

Golden bar or Golden chips—  
Fels-Naptha  
banishes "Tattle-Talc Gray"

### SHAFER BROS.

756 Bellefontaine 90671

- SMOKED HAMS OUR OWN CURE WHOLE OR HALF Lb. 33c
- BEEF ROAST ARM OR CHUCK .....Lb. 26c
- SIRLOIN STEAK .....Lb. 35c
- PUDDING, Our Own Make .... Lb. 15c
- FRESH GALAS .....Lb. 25c
- SIRLOIN SWISS STEAK .....Lb. 35c
- Smoked SAUSAGE .....Lb. 30c
- ROLLED RIB BEEF ROAST .... lb. 30c
- FRESH CRISPY CRACKERS ....Lb. Box 19c
- SAUSAGE Lb. ... 25c
- PRUNES PANFY .....Lb. 10c
- Shaffer's COFFEE Lb. 24c
- CIGARETTES CARTON—\$1.49

RENZ'S CHOCOLATE NUT FUDGE SUNDAY DINNER CAKE ..... 33c

### KROGER GUARANTEED BRANDS

SATURDAY SPECIAL

- FRESH PORK
- BRAINS lb. 12 1/2c
- BOLOGNA SMELTS lb. 19c 3 lb. 25c
- FRESH GROUND HAMBURGER lb. 12 1/2c

61 PUBLIC SQUARE & 305 N. COLE MARKET

### VIC'S

925 N. JAMESON  
PHONE 58551

### Chicago

60 PUBLIC SQUARE  
PHONE 7-1301  
OPEN TILL 9:30  
SATURDAY NIGHT

- MEATY LAMB STEW ..Lb. 10c
- SLICED BACON ENDS ....Lb. 16c
- LARGE BOLOGNA 17 1/2c LB.
- VEAL CHOPS ..Lb. 27c
- NUT OLEO 2 Lbs. 29c
- SLAB BACON ..Lb. 24c

SATURDAY IS THE LAST DAY TO GET SUGAR. WE HAVE PLENTY

### HOME STORES

LITTLE ELF WHEAT CEREAL

Milled from the heart of the finest western wheat. Little Elf Wheat Cereal used as a cooked breakfast food is delightful — served with cream and sugar it is a delight for the kiddies—and it contains many essential vitamins.

Get it at your favorite Home Store

### MEYER SUPER MARKET

HALLER-WEST ST. PHONE 3-2972

- DRESSED CHICKENS Lb. 25c
- BABY BEEF ROAST Lb. 25c
- MINUTE STEAKS lb. 35c
- BOILING BEEF lb. 15c
- Can Milk 4 For 29c
- HEAD LETTUCE 2 Heads 15c
- CHEEROATS 2 for 21c
- LARGE CAN APRICOTS ..... 17c
- RED RIPE Strawberries
- GOLD MEDAL Flour 24 Lbs 99c

### Chicago

60 PUBLIC SQUARE  
PHONE 7-1301  
OPEN TILL 9:30  
SATURDAY NIGHT

- MEATY LAMB STEW ..Lb. 10c
- SLICED BACON ENDS ....Lb. 16c
- LARGE BOLOGNA 17 1/2c LB.
- VEAL CHOPS ..Lb. 27c
- NUT OLEO 2 Lbs. 29c
- SLAB BACON ..Lb. 24c

SATURDAY IS THE LAST DAY TO GET SUGAR. WE HAVE PLENTY

### WE NEVER CLOSE

O. L. (Lee) WALTON, Prop.

Corner Main and Elm We Deliver Phone 98301

### WE NEVER CLOSE

OPEN 24 HOURS A DAY  
Everyday Sundays and Holidays!  
OPEN 7 DAYS—7 NITES A WEEK

- ORANGES California Sunkist Navel ..... 2 Doz. 29c
- BANANAS Golden Ripe ..... 2 Lbs. 25c
- GRAPEFRUIT Seedless ..... 5 For 25c
- HEADLETTUCE Fresh Crisp ..... 2 Heads 15c
- CELERY Florida ..... 2 For 15c
- CARROTS Calif. Crisp, Tender ..... 2 Bunches 19c
- RADISHES White Icicle ..... 2 For 15c
- LEAF LETTUCE .....Lb. 15c
- APPLES Jonathan Delicous ..... 4 Lbs. 25c
- CRUIK-SHANKS APPLE BUTTER 2 Lb. Can 17c

SILVER SEA VACUUM PACK COFFEE ..Lb. 31c  
We Redeem Coupons

- HI-HO CRACKERS ..... Lb. 19c
- PET. CARNATION OR LION MILK ..... 3 Cans 25c
- RAYON SAFE SUPER SUDS GIANT SIZE ..... 60c
- TOWEL IN EVERY PACKAGE
- VEL Lge. Pkg. 25c PALMOLIVE SOAP 2 CAKES 1c All For 26c
- ARMOURS MILK ..... 4 Cans For 31c

### WALLPAPER CLEANERS

WALVET, CLIMAX OMAR LARGE CAN ..... 29c

### PIONEER MEAT DEP'T.

- PORK LOIN ROAST RIB END .....Lb. 28c
- BEEF POT lb. 23c
- ROAST 23c
- Pork Blade Cuts 29c
- Smoked Callies ..... Lb. 27c
- KRAFT CHEESE 55c
- GROUND BEEF LB. 25c
- FRYING CHICKENS STEWING HENS

HOEGNER & CANTIENY PRE-COOKED HAMS Finest For Flavor

### RENZ'S

CHOCOLATE NUT FUDGE  
Large dark layers. Fudge icing topped with nut meats ..... 33c