

Gladys George To Star In Kate Smith Drama Friday

"Lady In Waiting" Will Be Highlight Of Program; Al Pearce Plans More Nonsense On Show

Gladys George, stage and screen star currently featured on Broadway in the comedy hit "Lady In Waiting," will highlight the dramatic portion of the "Kate Smith Hour" Friday at 7 p. m. over WABC.

Amateur singers, musicians and actors have been getting their big chance at the expense of a lot of good professional talent, so Al Pearce is going to remedy the situation with a Pro Talent Drive starting Friday on his weekly WABC broadcast at 6:30 p. m.

Frank Munn, tenor, will sing the current hit, "Where Do I Go From You" and the hitting ballad, "Her Name Was Rosita" on "Waltz Time," Friday at 8:00 p. m. over WEAP. Abe Lyman's orchestra will open the program with "In a Monastery Garden" and will play in addition "The Little Danube Waltz," "Seal It With a Kiss" and "Love's Dream After the Ball." The Amsterdam chorus will present "You're Lonely and I'm Lonely" and "Dreamy Melody."

"Showboat" with Cap'n Barney at the wheel, and a crew of radio artists, will steam up the Appomattox and drop anchor at Petersburg, Va., Friday at 8 p. m. over WJZ. Music will include "Lover Come Back To Me," by Virginia Verrill, soprano; "Make Believe Island," by Dick Todd, baritone; "Great Day," and "Louisiana Hayride" by Robert Trendler's Showboat orchestra and "In the Mood" with Bob Strong's dance band.

The Old Ranger will tell the true story of "Abe Curry's Fire Engine Company" on the "Death Valley Days" broadcast of Friday at 7:30 p. m. over WJZ. Abe Curry was the founder of Carson City, Nevada.

FRIDAY, JUNE 7

Eastern Standard P. M.—Subtract One Hour for C.E.T. Daylight Time One Hour Later (Changes in programs as listed due to last minute network corrections.)
7:00—Lil Abner's sketch—wbc-wbc
7:05—Earl Wlad, Pianist—nbc-wbc
7:10—Broadway Period—cbs-wabc
7:15—Dance Music—nbc-wbc
7:20—Alma Kitchell's Prog.—nbc-wbc
7:25—Ed Hill Rpt. (10 m.)—cbs-Dixie
7:30—Capt. Healy Slumps—west-only
7:35—Three Cheers, Song—nbc-red-chain
7:40—Dancing Music Orchestra—nbc-wbc
7:45—East Sullivan News—cbs-wbc
7:50—Chicago Swing Serenade—cbs-west
7:55—Paul Douglas Spits—west-only
8:00—Rocky Gordon Serial—nbc-red-chain
8:05—Lowell Thomas News—nbc-wbc
8:10—Europe War Broadcast—nbc-wbc
8:15—Orphan Annie in Repeat—mbs-west
8:20—Warrior Time—nbc-wbc
8:25—H. Foote and Organ—nbc-red-west
8:30—Josef Marías & His Song—nbc-wbc
8:35—Amos & Andy Serial—nbc-wbc
8:40—Louise Davis's Prog.—cbs-chain-west
8:45—Pulton Lewis, Jr., Talk—mbs-chain
8:50—Europe War News—nbc-west
8:55—Lenny Ross in Song—cbs-wabc
9:00—Paul Sullivan and repeat—cbs-west
9:05—To Be Announced (15 m.)—nbc-wbc
9:10—Revelers—wca-ky-wbz-wmal
9:15—Dancing Music Orch.—nbc-red-chain
9:20—NBC's Concert Orchestra—nbc-wbc
9:25—Al Pearce and His Gang—cbs-wabc
9:30—Lone Ranger, Drama—mbs-wor-east
9:35—Ed Hill Rpt. (10 m.)—cbs-Dixie
9:40—Dancing Music Orch.—nbc-red-chain
9:45—Sam Balter on Sports—waa-wiv-wk
9:50—Lucille Ball Serial—nbc-wbc
9:55—NBC's Concert Orchestra—nbc-wbc
10:00—Kate Smith's Variety Hr.—cbs-wabc
10:05—Ed Hill Rpt. (10 m.)—cbs-Dixie
10:10—"Death Valley Days"—nbc-wbc
10:15—Ellen West's Sinfonietta—mbs-wor
10:20—Elmer Davis, News—cbs-wabc
10:25—Abe Lyman, Valettes—nbc-wbc
10:30—Show Boat, via the Radio—nbc-wbc
10:35—Johnny Presents Orchest.—cbs-wbc
10:40—Bill Ackerman on Sports—mbs-net
10:45—Ed Hill Rpt. (10 m.)—cbs-Dixie
10:50—"What's My Name?"—nbc-wbc
10:55—"Amazing America" Quiz—nbc-wbc
11:00—In Grand Central Station—cbs-wbc
11:05—A Command Performance—mbs-wor
11:10—Don Ameche Variety—nbc-wbc
11:15—Dancing Music Orchestra—nbc-wbc
11:20—To Be Announced (30 m.)—cbs-wabc
11:25—Raymond G. Swing's Talk—mbs-wor
11:30—News and Dance Music—nbc-wbc
11:35—C. Searchinger Talk—nbc-wbc
11:40—NBC's Concert Orchestra—nbc-wbc
11:45—Natalie's Marriages—nbc-blue-west
11:50—The Gay Nineties Revue—cbs-wabc
11:55—Dancing Music Orchestra—mbs-wor
12:00—Humor Nature, Film—nbc-west
12:05—News and Dance—nbc-west-east
12:10—Fred Waring's repeat—nbc-red-west
12:15—News and Dance Music—nbc-wbc
12:20—News Broadcasting—cbs-wabc-east
12:25—Amos and Andy in repeat—cbs-west
12:30—Dancing Music Orchestra—nbc-wbc
12:35—Ed Hill Rpt. (10 m.)—cbs-Dixie
12:40—Dance Music Orchestra—nbc-west
12:45—Dance Orch. News 111—cbs & mbs
12:50—Lenny Ross rpt. (15 m.)—cbs-west
12:55—Ed Hill Rpt. (10 m.)—cbs-Dixie
1:00—Dancing Music Orch. to 12—nbc-wbc
1:05—Hour of Dance Music—nbc-wbc

"MAKING A BEE LINE"

LUBBOCK, Tex., June 7 — (INS) — "Making a bee line" thru the winds of West Texas is no cinch, according to the apiarist at Texas Technological College. Bees from college hives, following the usual straight line to and from their campus habitat, are often blown off their course in the spring and never return. Thousands are lost each year for this reason.

TO BURY RADIUM STOCKS

LONDON, June 7 — (INS) — Radium stocks in the north of England are to be buried in a hole drilled fifty feet deep in rock behind the Liverpool Radium Institute. The hole will be covered with a steel and concrete bomb-proof shelter.

Want to Get OUT of Debt? Come to Colonial!

Trade ALL your bills and obligations for an easy-to-pay Colonial Plan loan and have only ONE small payment to make monthly. It's the thrifty way OUT of debt. Our step down interest rate saves you money. Get \$25 to \$1000 on YOUR signature, auto, or other personal security!

COLONIAL FINANCE Co. 110 N. Elizabeth St. Lima, Ohio Phone Main 7333

DESERTED TANKS IN DESERTED VILLAGE



These are French and Belgian tanks, according to the German censor-approved caption, in an unnamed village on the Western front after the Nazis had entered the town. (Photo by Clipper mail.)

POWER LINE AT PLANT BLASTED

Newcomerstown Strike Grows Tenser; National Guard Observer Asked

NEWCOMERSTOWN, June 7 — (INS) — Tenseness of the strike situation at the Heller Brothers manufacturing plant increased today, as stones were hurled thru windows and a utility pole supporting power lines into the plant was blown up.

The mayor of Newcomerstown telephoned Adjt. Gen. Gilson D. Light, requesting that a National Guard observer be dispatched to the strike scene but made no request for troops, the adjutant general reported in Columbus.

General Light promised to send an observer to Newcomerstown this afternoon, but did not know immediately which officer would be assigned.

Wide attention has centered on the Heller Brothers strike because the plant is engaged in manufacturing a special type of the used in airplane construction and figures in the national defense program. Union workers (AFL) are striking for a closed shop.

Union spokesmen disclaimed responsibility for blowing up the power line pole and likewise denied that strikers hurled stones thru plant windows. Forty-one windows were broken. It was estimated that about 200 men were on the picket lines around the factory. The strike has been in progress since May 29.

J. R. Wood, plant manager, reported the receipt of threats of personal harm which he described as a violation of an injunction previously issued by Common Pleas Judge E. E. Lindsay. He said he was considering filing charges against certain workers who allegedly threatened him.

Approximately 400 of the 750 Heller Brothers workers remained at their posts, passing thru picket lines to continue production.

CLEVELAND, June 7 — (INS)

Charges made by George Edger-ton, leader of the A. F. of L. strike at the Heller Bros. Co., in Newcomerstown, that the company offered workers a bonus if they refused to join the union were under investigation today by Walter Tagg, field examiner of the National Labor Relations board.

YOU CAN GET THROUGH ON N. MAIN STREET TO BANANNOS
Remember Our Beer Is Always Cold—Ready to Serve!
100 Brands of Beer
1862 JACKSON'S CINCINNATI PILSENER
3.2-4 Bottles 25c
For CASE OF 24—\$1.45
7%—4 Bottles 29c
For CASE OF 24—\$1.65
JACKSON BOHEMIAN
3.2-4 Bottles 29c
For CASE OF 24—\$1.65
7%—4 Bottles 32c
For CASE OF 24—\$1.89
Quarts Beer 19c
3.2-16c 7% Qt. 55c
7% Old Bavaria 6 for \$2 up
Can Beer
Pony Kegs
"We have picnic pumps" Burkhardt Mug Ale in Pony Kegs
Imported CAVIAR
BONANNO'S
768 N. MAIN ST. MAIN 6876

AIR TRAINING PLANS DRAFTED

Col. Knox Says Facilities Available For Training 2,925 At Once

CHICAGO, June 7—(AP)—Col. Frank Knox, national chairman of Aviation Plattsburgs, announced today facilities had been set up in the middle west to train 2,925 young men in primary flying beginning June 15.

Instructors and equipment were ready, he said, at 90 universities and colleges, and he urged men wishing to get flight training to apply at these schools.

The middle west facilities form part of a program to train 45,000 air pilots throughout the country during the next year. A congressional appropriations provides for about \$25 for board and room for the students during the first 10 weeks of schooling.

Ohio schools where students may register, with quotas for each in-

stitution, follow: Baldwin Wallace college, Berea, 15; Capital university, Columbus, 15; Case School of Applied Science, 45; Fenn college, Cleveland, 30; Kent State university, 60; Kenyon college, Gambier, 15; Lake Erie college, Painesville, 15; Marietta college, 15; Mount Union college, Alliance, 30; Ohio Northern university, Ada, 30; Ohio State university, 75; Ohio university, Athens, 45; University of Akron, 45; University of Cincinnati, 75; University of Dayton, 30; University of Toledo, 45; Wittenberg college, 15; Xavier university, Cincinnati, 30; Youngstown college, 30; Bowling Green State university, Bowling Green, Ohio.

MOST PRECIOUS STONE

The emerald is the most precious of all stones. They may be even more valuable than diamonds, but they must be flawless to attain such value, and only a few emeralds can be classed as such.

Flames leap outward from the surface of the sun at the rate of 20,000 miles a minute, and sometimes reach a height of 500,000 miles, according to a California scientist.

COOPERATION ON FLAG WEEK IS ASKED BY ELKS

WAPAKONETA, June 7—Appeals to local religious, patriotic and fraternal organizations to cooperate with the local Elks lodge in the observance of Flag Week, June 8 to 14, have been issued by Emmett D. Lusk, local attorney and chairman of the lodge's committee in charge of arrangements.

Ministers of churches here have been asked to devote some part of their Sunday morning service to the aims of the observance, "To Honor the Flag and Uphold Its Ideals."

Patriotic and fraternal organizations have been asked to cooperate with the Elks in the formal observance of the week here Friday evening, June 15, when a specially arranged program is to be presented on the steps of the Elks home.

The Friday evening program will include a concert by the Wapakoneta Community band and an address by Roy E. Layton, local attorney, Max Christian, chairman of the program committee announced. Members of the local Auglaize post, American Legion, also will take part.

BRAZIL TERMED AMERICA'S KEY FOR DEFENSES

Major General Reports On Vital Needs In United States Setup

IDEAL SUPPLY BASE

Policy Of South American Nation Coincides With Notions Here

SAN FRANCISCO, June 7 — (UP)—Brazil is the "all-essential" country in South America for making possible the carrying out of the United States' new policy of insuring both Americas from invasion, according to Major-Gen. David P. Barrows of the U. S. army.

Barrows, former president of the University of California, prepared a detailed study for the national defense section of the Commonwealth club of California on the new problems created by America's determination to assume the defense in both Southern Atlantic and the Southern Pacific waters.

Copies of the report have been placed in the hands of President Roosevelt, congressional leaders and the navy and war departments.

TWO OCEANS CONSIDERED

Explaining that a fleet can only operate within a radius of 2,000 to 2,500 miles, and an air force within a smaller area, Barrows points out the effective defense of the American fleet toward the south would be limited merely to the northern countries of South America. On the Pacific side, he points out, the circle of the fleet's effectiveness would pass thru Peru. The present Atlantic bases, he said, furnish protection only as far south as the northern half of Brazil.

"While we can make our defense of the Panama Canal and the Car-

ibbean effective with our present naval and air bases, yet if we are to carry out our newly defined policy in North and South America, we must have help from the southern continent," his report stated.

"That help must necessarily be less military than naval in cooperation with our own efforts.

"In South America," in my opinion, "the essential state is Brazil. Brazil is a mighty state, embracing half of the continent and half of the people.

"I mean by cooperation, Brazil's willingness to put whatever she has that is useful to us at our disposal.

"And this includes harbors, and fortified air bases to the south. This cooperation we must have, if we are to undertake the defense of the whole southern continent.

"That cooperation, too, I fancy we already have. For 100 years the Brazilian policy has moved right along with the American policy, which is highly fortunate."

Barrows pointed out that with the fleet effective from its home bases for the defense of the northern half of Brazil, it would, with a Brazilian base, become also effective for the defense not only of the rest of Brazil but for the

whole southern Atlantic coast for 2,000 to 2,500 miles southward.

"The map gives the reason," Barrows reported, "why we must have the assistance of Brazil. Brazil and most of South America lie east of North America.

"The eastward bulge of Brazil is far closer to the Mediterranean and to Africa than any point on our Atlantic coast, and is more easily reached by a hostile force than by our own naval and air power."

ORIGIN OF THE SANDWICH

In order that he might not lose time, the Earl of Sandwich, a great gambler of the 18th century, had food brought to the gambling tables. To do away with eating utensils, he had meat placed between slices of bread. Thus originated the sandwich.

Three suits of armor worn by Henry VIII of England, on display in the Tower of London, show waistlines measuring 35, 38 and 54 inches.

DORRIES JANITOR SUPPLY Co.

MAIN 2022 MORRIS ARCADE

OPEN 'TIL 9 P. M.

NO OTHER REFRIGERATOR HAS THIS ADVANTAGE

NO OTHER STORE OFFERS BETTER TERMS IN BUYING IT

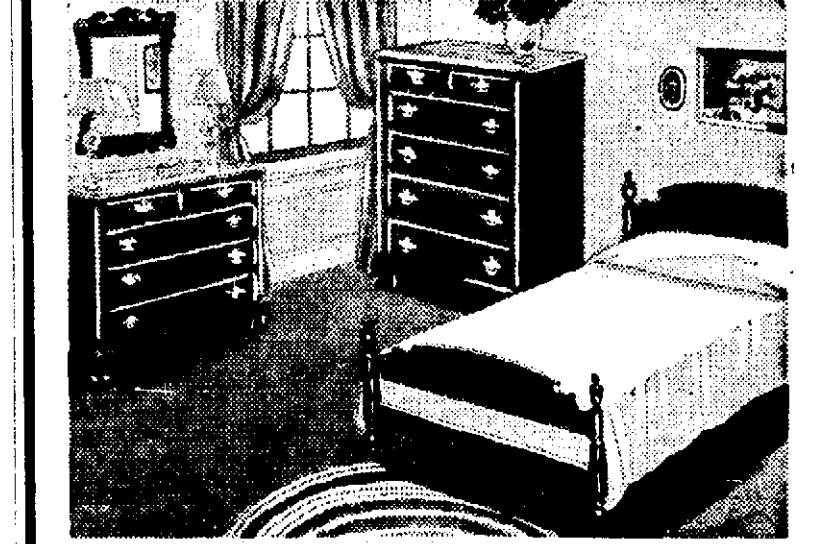
99⁹⁵ UP

The NEW CROSLLEY



NO MONEY DOWN

BEDROOM SPECIAL



3 PIECES Walnut Finish \$39⁵⁰

NO PAYMENT 'TIL JULY 10TH

"You Furnish The Girl — We'll Furnish The Home"

GOOD HOUSEKEEPING SHOP

210 E. MARKET 210 E. MARKET

Open 'Til 9 P. M. Daily

THIS IS BUICK'S BIGGEST YEAR

Imagine You—in our all-time best-seller!

Yes—prices begin at \$895 for the business coupe—price of the 4-door sedan illustrated is \$996 delivered at Flint, Mich.★

But why just look at it? Why not try it?

Why not go find out what this car's got that has made more people buy Buick this year than even back in the easy-money days of the twenties?

See what there is about that big, hundred-plus horsepower Dynafash straight-eight that gets people — what it's like to have plenty-room all around and style that has the highway eyeing you.

You ought to know about the BuCoil Springing ride—it's not only gentle and easy, but these soft steel coils eliminate a lot of fuss and care about lubrication.

And you ought to have the straight

dope about prices—prices that make this Buick the yardstick of up-to-the-minute car values.

This much will give you an idea: Current prices begin at \$895 for the business coupe, delivered at Flint, Mich. ★Transportation based on rail rates, state and local taxes (if any), optional equipment and accessories are to be added.

What the total amounts to is a surprisingly low figure — one your local Buick dealer will be tickled to show you.

†Prices subject to change without notice.

"Best buy's Buick!"

EXEMPLAR OF GENERAL MOTORS VALUE

MOTOR SERVICE INC.

121 No. West St. M-4966

SEE THE GENERAL MOTORS EXHIBITS AT THE NEW YORK AND SAN FRANCISCO FAIRS

SOME THINGS YOU CAN'T GET ANYWHERE EXCEPT IN BUICK

- SWIFT AND THIRTY DYNAFASH VALVE-IN-HEAD STRAIGHT-EIGHT ENGINES • POWER PLANTS ELECTRICALLY BALANCED AFTER ASSEMBLY • COIL SPRINGS ALL AROUND • ORIGINAL SUPER-DRIVE • ORIGINAL SUPER-STREAMED STYLING • PRESSURE-SEALED COOLING SYSTEM
- FORE-AND-AFT DIRECTION SIGNAL WITH AUTOMATIC CUT-OFF
- BUICK SKILL, BUICK CRAFTSMANSHIP, BUICK VALUE