

Radio News and Programs

FDR, Cantor, Others to Aid in Will Rogers Memorial Dedication



The nation will hear two addresses by President Roosevelt on Friday—both from his home at Hyde Park, N. Y.

Opening of NBC's new studios in Hollywood has Bob Burns wondering if he should throw his broom on the new floor at the conclusion of each of his Thursday night "Music Hall" broadcasts or get a heavy rubber mat to toss it on.

WIND 503 WBA 1070 WJW 620 WIS 1070 WIS 653 WTAM 1070 WJW 740 WIS 1070 WIS 700 WIS 1120 WGN 720 WJW 1130 WJW 740 WIS 1210 WJW 770 KOIL 1250 WJW 810 WIS 1290 WJW 820 WJW 1460 WJW 870 KSTP 1460

WIBA Tonight

7:00-Wildlife Fractation 7:15-Campus Jamboree 7:30-News Edition 7:45-Next the Top 10 8:00-Dinner Melodies 8:15-Social Varieties 8:30-Next the Top 10 8:45-Community Union 9:00-Music Hall 9:15-Night News Edition 9:30-Next the Top 10 9:45-Next the Top 10 10:00-Richard Himber Orchestra 10:15-Club Chanticleer 10:30-Hollywood Melodies 11:00-Club Chanticleer

Short Wave Tonight

London 5:35 p. m.—"All in Pink" Empire Service GSB, 19.6 m., 13.1 meq.; GSO, 25.5 m., 15.9 meq.; GSD, 25.5 m., 11.75 meq.; GSC, 31.3 m., 9.58 meq.; GSB, 31.3 m., 9.58 meq.

Other Stations Tonight

5:00-Don Winslow-WJW WENR 5:00-Lone Ranger-WTJW 5:00-Dick Tracy-WMAQ 5:15-Howie King-WBWB 5:15-Melvin Clark-WENR 5:30-Jimmie Allen-WMAQ 5:30-Jack Armstrong-WMAQ WTJW 5:30-Evening Serenade-WGN 5:45-You and Your Hobby-WENR 5:45-Lowell Thomas-WJW 5:45-Little Orphan Annie-WGN 5:45-Straight Shooters-WMAQ 6:00-Artos m' Army-WJW WTAM KSTP 6:00-Captain Midnight-WGN 6:00-Easy Acc-WENR KSO WMT 6:00-Tony Cento-Tony WJW 6:00-Helmer's Granddaddy-WTJW 6:15-Capt. Heme Speakup-WGN 6:15-Social Varieties-WJW WMAQ 6:15-George McCall-WBWB 6:15-Mr. Keen-WENR KSO WMT 6:30-Joe Penner-WBWB 7:00-Rudy Vallee-WMAQ WTJW WJW 7:00-Kate Smith-WBWB 7:00-The Green Hornet-WJW 7:15-Know Your School-WIS 7:30-Farmers' Forum-WJW 7:30-Lighting Jim-WIS 7:30-Glad News-WMAQ WTJW WJW 8:00-Franz Bolzoni Orch.-WENR 8:00-Nancy Brown-WBWB 8:00-Don't You Believe It-WGN 8:00-Charles Sears-WENR 8:30-History Repeats-WGN 8:45-Henry Water Revue-WGN 9:00-Music Hall-WJW WTJW WMAQ 9:00-People I Have Known-WENR 9:00-Columbia Workshop-WBWB 9:30-Scotts Herald-WBWB 9:30-Herbert-WGN 9:45-Del Bright Orch.-WBWB 10:00-Vincent Lopez Orch.-WBWB 10:00-Amos in Andy-WMAQ WHO WMT 10:30-Richard Himber Orch.-WMAQ 10:30-Joe Sanders Orch.-WGN 10:30-Earl Meeus Orch.-WENR

News Broadcasts

THURSDAY NIGHT 5:45-WIND 8:00-WCFI 5:25-WENR 9:45-WIND 5:30-WIBA 10:00-WJW WLV 6:30-WMAQ 10:00-WENR 6:45-WLS 10:30-WBWB 7:00-WGN 11:00-WMAQ 7:30-WIND 1:30-WBWB 8:30-WGN

Sports Reviews

THURSDAY NIGHT 5:30-WENR WLV 6:30-WIBA WLS 5:30-WIND 9:30-WBWB 6:30-WGN 10:10-WTJW

Market Reports

FRIDAY 11:45-WLS A. M. 6:00-12:30 W. F. M. 10:30-WLS 12:45-WLS 10:30-WLS WIND 1:15-WJW 11:30-WLS 1:30-WLS

WHA Friday

8:00-Bandwagon 8:15-Morning Melodies 9:00-Red Cross Program 9:15-Wisconsin Political Forum: Republican Party 9:30-School of the Air: Rhythm and Games, Fannie Steve. 9:30-U. S. Weather Bureau. 10:00-Homemakers' Program: Cutting the Cost of Fruit Cakes, Stella Paton; This Month in Music, Tschikowsky, An Interview, Opus, the Book Club, Ella Valborg Rolvaag. 10:45-William Scherpp, Clarinet-Renaud, Wisconsin, piano. 11:00-Magazine Rack. 11:10-Musical Interlude. 11:30-French Drama: Marie Antoinette. 11:45-Organ Gems: Frederic Antonette. 12:00-Noon Musicale. 12:30-Farm Program: Our Services to Consumers and Producers, Harry Kliewer; The Farmers' Question Box, R. B. Rasch. 1:00-School for Workers. 1:15-Wisconsin Political Forum. 1:30-College of the Air: American Youth Service, James C. Flint. 2:00-School of the Air: Radio Reading Club, Bill McCord. 2:30-Music of the Masters: Kreutzer Sonata-Beethoven, 2nd & 3rd movements. 3:00-College of the Air: Public Discussion Clinic. 3:30-U. S. Weather Bureau.

WIBA Friday

7:00-The Farm Front 7:05-The Musical Clock 7:30-State Journal News 7:45-Next the Top 10 8:00-Musical Clock 8:30-Today's Almanac 8:45-Society Reporter 9:00-WIBA Concert, Trio 9:30-NBC Jerry Sears Orchestra 9:45-Next the Top 10 10:00-NBC Music Appreciation 10:30-NBC Story of the Month 10:45-Next the Top 10 11:00-Linda's First Love 11:15-The Editor's Daughter 11:30-NBC Farm and Home Hour P. M. 12:15-NBC Farm Service 12:30-Night News Edition 12:45-Next the Top 10 1:00-The Country Home 1:10-Melody Moments 1:15-NBC Music Appreciation 2:00-NBC Will Rogers Memorial 2:45-NBC Between the Book Ends 3:00-NBC Bankers Write 3:15-NBC Stella Dallas 3:30-NBC Club Matinee 4:00-NBC Affairs of Anthony 4:15-NBC Your Family and Mine 4:30-NBC The Land Trio 4:45-The Life of Cowboy 5:30-Studio Program 5:15-Campus Jamboree 5:30-Night Edition 5:45-Sportscast 6:00-The Traveler Speaks

News Broadcasts

THURSDAY NIGHT 5:45-WIND 8:00-WCFI 5:25-WENR 9:45-WIND 5:30-WIBA 10:00-WJW WLV 6:30-WMAQ 10:00-WENR 6:45-WLS 10:30-WBWB 7:00-WGN 11:00-WMAQ 7:30-WIND 1:30-WBWB 8:30-WGN

Sports Reviews

THURSDAY NIGHT 5:30-WENR WLV 6:30-WIBA WLS 5:30-WIND 9:30-WBWB 6:30-WGN 10:10-WTJW

Market Reports

FRIDAY 11:45-WLS A. M. 6:00-12:30 W. F. M. 10:30-WLS 12:45-WLS 10:30-WLS WIND 1:15-WJW 11:30-WLS 1:30-WLS

WHA Friday

8:00-Bandwagon 8:15-Morning Melodies 9:00-Red Cross Program 9:15-Wisconsin Political Forum: Republican Party 9:30-School of the Air: Rhythm and Games, Fannie Steve. 9:30-U. S. Weather Bureau. 10:00-Homemakers' Program: Cutting the Cost of Fruit Cakes, Stella Paton; This Month in Music, Tschikowsky, An Interview, Opus, the Book Club, Ella Valborg Rolvaag. 10:45-William Scherpp, Clarinet-Renaud, Wisconsin, piano. 11:00-Magazine Rack. 11:10-Musical Interlude. 11:30-French Drama: Marie Antoinette. 11:45-Organ Gems: Frederic Antonette. 12:00-Noon Musicale. 12:30-Farm Program: Our Services to Consumers and Producers, Harry Kliewer; The Farmers' Question Box, R. B. Rasch. 1:00-School for Workers. 1:15-Wisconsin Political Forum. 1:30-College of the Air: American Youth Service, James C. Flint. 2:00-School of the Air: Radio Reading Club, Bill McCord. 2:30-Music of the Masters: Kreutzer Sonata-Beethoven, 2nd & 3rd movements. 3:00-College of the Air: Public Discussion Clinic. 3:30-U. S. Weather Bureau.

WIBA Friday

7:00-The Farm Front 7:05-The Musical Clock 7:30-State Journal News 7:45-Next the Top 10 8:00-Musical Clock 8:30-Today's Almanac 8:45-Society Reporter 9:00-WIBA Concert, Trio 9:30-NBC Jerry Sears Orchestra 9:45-Next the Top 10 10:00-NBC Music Appreciation 10:30-NBC Story of the Month 10:45-Next the Top 10 11:00-Linda's First Love 11:15-The Editor's Daughter 11:30-NBC Farm and Home Hour P. M. 12:15-NBC Farm Service 12:30-Night News Edition 12:45-Next the Top 10 1:00-The Country Home 1:10-Melody Moments 1:15-NBC Music Appreciation 2:00-NBC Will Rogers Memorial 2:45-NBC Between the Book Ends 3:00-NBC Bankers Write 3:15-NBC Stella Dallas 3:30-NBC Club Matinee 4:00-NBC Affairs of Anthony 4:15-NBC Your Family and Mine 4:30-NBC The Land Trio 4:45-The Life of Cowboy 5:30-Studio Program 5:15-Campus Jamboree 5:30-Night Edition 5:45-Sportscast 6:00-The Traveler Speaks

Other Stations Friday

5:30-Smile a While-WTJW 6:00-Top of the Morning-WTJW 6:30-Dawn Salute-WBWB 6:30-Emily Bible Lecture-WJW 7:00-Suburban Hour-WMAQ 7:20-Musical Clock-WBWB 7:45-Dick Tracy-WMAQ 7:45-Jilly Joe's Pet Pals-WLS 8:00-Your Neighbor-WMAQ 8:00-Morning Devotions-WLS 8:30-Joyce Jordan-WBWB 8:30-Saint Parade-WMAQ KSO WMT 8:45-Those Happy Gilman-WTJW 9:00-Household Hannah-WLS 9:00-Mrs. Wiggs-WMAQ WTAM WHO 9:00-Dick Tracy-WMAQ 9:00-Pretty Kitty Kelly-WBWB WCO 9:15-Betty Crocker-WGN 9:15-John's Other Wife-WMAQ WHO 9:15-Mary and Margie-WBWB WCO 9:15-Jane Arden-WLS 9:15-Betty Kline, Inc.-WTJW 9:15-Hilary House-WBWB WCO 9:30-Just Plain Bill-WMAQ WHO 9:30-Mme. Courageuse-WLS WLV 9:30-Dick Tracy-WMAQ 9:45-Woman in White-WTJW WMAQ 9:45-Stepmother-WBWB WCO 9:45-Lois Parkins-WLS 10:00-Mary Martin-WLS 10:00-Mary Martin-WMAQ WHO 10:00-Julia Blake-WLS 10:15-Vic and Sade-WJW WLS 10:15-Lorenzo Jones-WMAQ WHO 10:15-School of the Air-WJW 10:15-Editor's Daughter-WBWB 10:30-Rex Sister-WBWB WCO 10:30-Lois Parkins-WMAQ 10:30-Pepper Young-WLS 10:45-Road of Life-WJW WTJW WMAQ 10:45-Lois Parkins-WMAQ 10:45-Aunt Jenny's Stories-WBWB 11:00-Curtains of Elm St.-WMAQ 11:00-Lois Parkins-WBWB WCO 11:00-Maria Crane, Helen Joyce-WLS 11:00-Betty and Bob-WTJW 11:00-Dick Tracy-WMAQ 11:00-Parent of Missing Persons-WJW 11:00-Criminal Court Interviews-WJW 11:00-Lois Parkins-WMAQ 11:15-Helen Nancey James-WBWB 11:15-The O'Neills-WJW WMAQ 11:30-Fern and Glenn-WLS 11:30-Mary Martin-WMAQ WLV WLV 11:30-Farm and Home Hour-WMAQ 11:30-Saturday Club-WJW 11:30-The Land Answer-WJW 11:45-Our Gal, Sunday-WBWB P. M. 12:00-The Golden Rule-WBWB WCO 12:00-Compassion Control-WLS 12:15-Vic and Sade-WBWB WCO 12:15-Lois Parkins-WMAQ 12:20-Road of Life-WBWB WCO 12:25-Midday Service-WGN 12:45-Nancy Brown-WBWB 12:45-Two on a Staircase-WGN 1:00-Betty and Bob-WMAQ WLV 1:00-School Time-WLS 1:15-Griffin's Daughter-WTJW WMAQ 1:30-School of the Air-WBWB 1:30-The Land Answer-WJW 1:30-Valiant Lady-WMAQ WLV WLV 1:45-Betty Crocker-WMAQ WLV WHO 2:00-Lois Parkins-WMAQ 2:00-Sentenced Men-WJW 2:00-Pres. Roosevelt-WBWB 2:00-Mary Martin-WMAQ WTJW WLV 2:15-Kaffee Klatsch-WGN 2:15-Homemakers' Hour-WLS 2:15-Minister Mother-WBWB WMAQ 2:15-Meet the Masses-WBWB 2:30-Pepper Young-WMAQ WTJW WLV 2:30-Lois Parkins-WMAQ 2:45-Guiding Light-WJW WLV WMAQ 2:45-Backstage Life-WMAQ WTJW 3:00-Club Matinee-WGN 3:15-Stella Dallas-WTJW WMAQ 3:30-Life Can Be Beautiful-WMAQ 3:45-A Book a Week-WGN 3:45-Tina and Dora-WBWB 3:45-Girl Alone-WMAQ WHO KSTP 4:00-Affairs of Anthony-WENR 4:00-Four-way Questionaire-WMAQ 4:00-Manhattan Mother-WBWB 4:15-Johnson Family-WGN 4:15-Household Hannah-WBWB 4:15-Industrial Research-WENR 4:15-Your Family & Mine-WMAQ 4:30-Nitty Keene, Inc.-WBWB 4:45-Supportive-Fruit-WJW 5:00-Dick Tracy-WMAQ 5:00-The Philhaven-WTJW 5:00-Don Winslow-WENR WLV WSP 5:15-Howie King-WBWB WCO 5:15-Jimmie Allen-WMAQ 5:30-Jack Armstrong-WMAQ WTJW 5:45-Little Orphan Annie-WGN 5:45-Lois Parkins-WMAQ 5:45-Lowell Thomas-WLV WMAQ 5:50-Tony Cento-Tony-WMAQ 6:00-Captain Midnight-WGN 6:00-Helmer's Granddaddy-WTJW

News Broadcasts

THURSDAY NIGHT 5:45-WIND 8:00-WCFI 5:25-WENR 9:45-WIND 5:30-WIBA 10:00-WJW WLV 6:30-WMAQ 10:00-WENR 6:45-WLS 10:30-WBWB 7:00-WGN 11:00-WMAQ 7:30-WIND 1:30-WBWB 8:30-WGN

Sports Reviews

THURSDAY NIGHT 5:30-WENR WLV 6:30-WIBA WLS 5:30-WIND 9:30-WBWB 6:30-WGN 10:10-WTJW

Market Reports

FRIDAY 11:45-WLS A. M. 6:00-12:30 W. F. M. 10:30-WLS 12:45-WLS 10:30-WLS WIND 1:15-WJW 11:30-WLS 1:30-WLS

WHA Friday

8:00-Bandwagon 8:15-Morning Melodies 9:00-Red Cross Program 9:15-Wisconsin Political Forum: Republican Party 9:30-School of the Air: Rhythm and Games, Fannie Steve. 9:30-U. S. Weather Bureau. 10:00-Homemakers' Program: Cutting the Cost of Fruit Cakes, Stella Paton; This Month in Music, Tschikowsky, An Interview, Opus, the Book Club, Ella Valborg Rolvaag. 10:45-William Scherpp, Clarinet-Renaud, Wisconsin, piano. 11:00-Magazine Rack. 11:10-Musical Interlude. 11:30-French Drama: Marie Antoinette. 11:45-Organ Gems: Frederic Antonette. 12:00-Noon Musicale. 12:30-Farm Program: Our Services to Consumers and Producers, Harry Kliewer; The Farmers' Question Box, R. B. Rasch. 1:00-School for Workers. 1:15-Wisconsin Political Forum. 1:30-College of the Air: American Youth Service, James C. Flint. 2:00-School of the Air: Radio Reading Club, Bill McCord. 2:30-Music of the Masters: Kreutzer Sonata-Beethoven, 2nd & 3rd movements. 3:00-College of the Air: Public Discussion Clinic. 3:30-U. S. Weather Bureau.

WIBA Friday

7:00-The Farm Front 7:05-The Musical Clock 7:30-State Journal News 7:45-Next the Top 10 8:00-Musical Clock 8:30-Today's Almanac 8:45-Society Reporter 9:00-WIBA Concert, Trio 9:30-NBC Jerry Sears Orchestra 9:45-Next the Top 10 10:00-NBC Music Appreciation 10:30-NBC Story of the Month 10:45-Next the Top 10 11:00-Linda's First Love 11:15-The Editor's Daughter 11:30-NBC Farm and Home Hour P. M. 12:15-NBC Farm Service 12:30-Night News Edition 12:45-Next the Top 10 1:00-The Country Home 1:10-Melody Moments 1:15-NBC Music Appreciation 2:00-NBC Will Rogers Memorial 2:45-NBC Between the Book Ends 3:00-NBC Bankers Write 3:15-NBC Stella Dallas 3:30-NBC Club Matinee 4:00-NBC Affairs of Anthony 4:15-NBC Your Family and Mine 4:30-NBC The Land Trio 4:45-The Life of Cowboy 5:30-Studio Program 5:15-Campus Jamboree 5:30-Night Edition 5:45-Sportscast 6:00-The Traveler Speaks

State Code Aids Cottage Owners

By CORNELIUS A. HARPER State Health Officer In its 11 years of existence, the state platting and sanitation code has made no great stir in our commonwealth, but its provisions have had the desired effect of protecting the interests of the ever-growing number of nature lovers who buy lots on our lakes and streams for summer occupancy.

Short Wave Friday

Moscow, 11:30 a. m.—The Mexican Diet and Guitars, NETA, 25.5 m., 11.8 meq. 11:30-Next the Top 10 Broadcast in English. RAN, 51 m., 9.8 meq. Guadalajara, 3 p. m.—Lectures, XEDQ, 21.4 m., 9.8 meq. Boston 3:53 p. m.—URSI/IRAM Broadcast of Scientific Data, WJXAL, 25.4 m., 11.75 meq. Berlin 4 p. m.—Berlin as a Port City, DLD, 25.4 m., 11.77 meq. London 5:40 p. m.—Remembrance, a play in one act, GPO, 19.6 m., 13.1 meq. GSO, 19.7 m., 13.1 meq.; GSD, 25.5 m., 11.75 meq.; GSC, 31.3 m., 9.58 meq.; GSB, 31.3 m., 9.58 meq. New York 7:45 p. m.—Golden Harmonies, WJXAL, 16.8 m., 12.5 meq. London 8:20 p. m.—The Thin Red Line, Chronicles of Famous Regiments, GSD, 15.8 m., 11.75 meq. GSO, 19.7 m., 13.1 meq.; GSD, 25.5 m., 11.75 meq.; GSC, 31.3 m., 9.58 meq.; GSB, 31.3 m., 9.58 meq. Paris 8:45 p. m.—Military Band, OLRSA, 25.5 m., 11.84 meq.; OLRSA, 19 m., 13.2 meq. New York 11 p. m.—Little Jack Little & Orchestra, dance music, WJXK, 49 m., 6.12 meq. Tokyo 12:15 p. m.—Japanese Information Series, JZL, 19.7 m., 13.16 meq.

Marian Martin



effects can be secured by contrasting jumper and blouse; use wool, synthetic or cotton for the jumper, which boasts curved straps that stay splendidly in place. And stitch up several blouses, some printed, some plain—for children need many smart "changes" around Thanksgiving and Christmas! Don't you love the swirl of the skirt, made with just two pieces! And, mothers, the entire frock goes together with simple ease, as your Sew Chart will tell you!

Decision on Browns' Manager Denied

ST. LOUIS, (U.P.)—Vice President William Dewitt of the St. Louis Browns today said rumors that the Browns' management "has been offered to this man and to that one are all bunk." "We have considered many men," Dewitt added, "but as yet no one has been offered the job. There's no hurry." Babe Ruth and Buck Newsom, the Browns' No. 1 pitcher, are among more than a dozen candidates. Others mentioned include Frankie Frisch, former St. Louis Cardinal manager; Jimmy Wilson, former Philadelphia Phillies pitcher; and Earl Benge, ex-time chum. Such adorable new

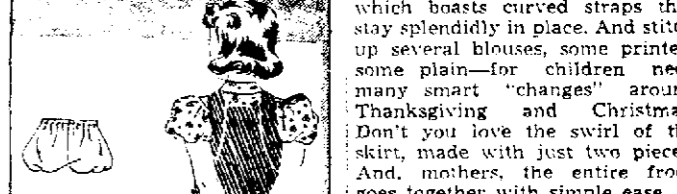
Parkside Receives Two New Members

Two new members, Olive Oswald and Margaret Flatman, were received into Parkside Presbyterian church Sunday. The Rev. F. T. Schuster is pastor of the church.

HUMANE GROUP MEETS

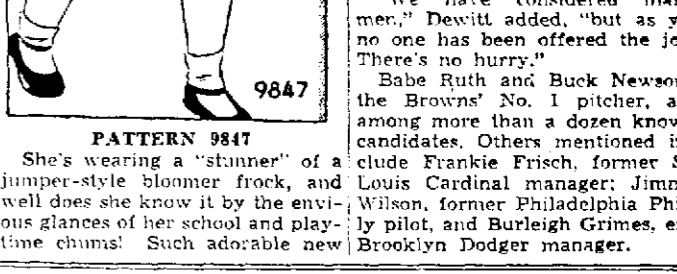
Directors of the Dane County Humane society will meet Thursday at 7:30 p. m. at the city library.

ORPHEUM



STAGE SHOWS "WHERE THE BIG PICTURES PLAY" Today Last Times — On Our Stage — GLEN GRAY AND THE FAMOUS Casa Loma Orchestra With Kenny Sargant • "Pee Wee" Hunt Sonny Bonham • Cass Daley • Fred Sabara Screen—Raymond Novarro "Desperate Adventure"

PARKWAY Today!



WELCOME, FREDDIE! HAIL, MICKEY! The world cheers your reunion... in your grandest adventure... with the thrills and the heart-stabbing appeal of your unforgettable "Pee Wee Courageous!"

Freddie and Mickey



Lord Jeff

with CHARLES COBURN HERBERT MUNDIN GALE SONDERGAARD

CO-FEATURE • A MOVIE QUIZ HIT • EX-WIVES—EAGER FOR ANOTHER FLING: "THE ROAD TO RENO"

with RANDOLPH SCOTT - HOPE HAMPTON GLENDA FARRELL - HELEN BRODERICK

STRAND MADISON

Today & Tomorrow Thrill-packed adventure with international spies!

"BULLDOG DRUMMOND IN AFRICA"

with JOHN HAYES LOLA LANE-PENNY SINGLETON

"MR. CHUMP"

with JOHNNY DAVE

"THE DEATH KISS"

with BELA LUGOSI

On Sale at Less Than 1/2 Price Brand New 1938 Model 11-TUBE KADETTE Round the World Radios \$29.95 \$5 DOWN Maker's surplus stock of these nationally famous console radios at less than wholesale prices. Get Europe, American, British, amateur, 11-tube chassis, de luxe cabinet. Price includes Free Antenna Kit and Free Installation. CAPITOL RADIO AND APPLIANCE CO. 340 State Street

DRIVEN BY THE LOVE OF TWO WOMEN... HE TORE CONTINENTS APART THAT SHIPS MIGHT SAIL THE DESERT! Starting Tomorrow! De Lesseps' heroic drama! Haunted by arms, eyes, lips denied him—his flaming genius built the mighty Suez Canal! When the twisting, all-destroying black simoon strikes, you'll see spectacle and emotion the screen has never captured before! See...The Suez Canal actually reproduced...armies of laborers, 7,000s of players...an endless chain of animals...a production miracle in the burning desert! See...The fabulous palaces of desert princes...rich with Oriental treasures...glamorous with Egyptian beauties! See...The devastating Bedouin raid...cliffs dynamited...a towering rock wall thundering down upon hundreds below! See...The ceremonial opening of the Suez Canal...an express bestowing the Legion of Honor upon the man she loves! TYRONE POWER • LORETTA YOUNG • ANNABELLA and J. Edward Bromberg • Joseph Schildkraut • Henry Stephenson Sidney Blackmer • Sig Rumann Maurice Mawkovich • Nigel Bruce Miles Mander • George Zucco DARRYL F. ZANUCK In Charge of Production Directed by Allan Dwan • Associate Producer Gene Markey • Screen Play by Philip Dunne and Julian Josephson Based on a story by Sam Duncan EXTRA: Wait Dixie Cartoon "MICKY'S FARTY" Pete Smith "Gold Rules" "WHERE THE BIG PICTURES PLAY"

AGHAST CAN YOU TAKE IT? HORROR Two Hair-Raising Blood-Curdling Thrillers! THE ORIGINAL BORIS KARLOFF (Frankenstein Star) in "MAN WHO LIVED AGAIN" THE ORIGINAL BELA LUGOSI (Dracula Star) in "THE DEATH KISS" "BULLDOG DRUMMOND IN AFRICA" with JOHN HAYES LOLA LANE-PENNY SINGLETON "MR. CHUMP" with JOHNNY DAVE