

RADIO TO CARRY TALK BY HUGHES

Jurist Scheduled to Speak Before Law Institute

Wickersham Will Preside at Conclave Opening

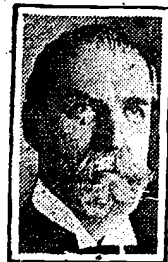
Fresno Raisin Day Festival on Broadcast List

The Times Forum, KHJ, at 1:30 p.m. Fred S. Hogue, editorial staff writer, "Democracy on Guard." World-wide News, 7 a.m., 12:30, 5:50 and 10 p.m.

BY JOHN S. DAGGETT

From ships to sealing wax is no more widely varied a combination than that offered by radio today. The two high lights are Charles Evans Hughes, in an address to the American Law Institute, and a broadcast of the parade at the Fresno Raisin Day festival.

At the opening session of the annual convention of the American Law Institute, to be broadcast over



CHARLES EVANS HUGHES

an N.B.C. network (KECA at 7:15 a.m.) Chief Justice Hughes of the United States Supreme Court will be the principal speaker. George W. Wickersham, president of the National Committee on Law Observance and Enforcement, is to preside.

Then at 10:30 a.m. KHJ brings

from its station KMJ at Fresno, a link in the Dan Lee-Columbia radio chain, the parade of the Raisin Day festival. No program of the detailed high lights has been received, but a gala frolic is planned.

(From Programs Submitted by Stations)

(ALPHABETICALLY ARRANGED)

6 to 8 a.m.

KECA—Amer. Law Institute. Chas. Evans Hughes, speaker. 7:15 (C.)
 KFI—Stock market. 6:30: health exercises. 6:45: news. 7:30: Dorothy Raymond, piano. 7:45.
 KHJ—News. 7: organ. 7:30.
 KMPC—Latin-American program. 7.
 KMTR—Andy and Chester. 6: Breakfast Club. 7.
 KNX—Time and Sharples' Breakfast Club. 7.
 KTM—News. 7:30.

8 to 10 a.m.

KECA—Piano. 8: Wall-Street Flashes. 8:15: exercises. 8:30: Log of the Day (C.) 9: Spanish. 9:15: pianist. 9:30.
 KFI—Shell Happy Time. 8: Piano Twins. 9: Children's Clinic. 9:15: ballads. 9:30: organ. 9:45.
 KFVB—Severi's Orch. 9.
 KHJ—Hallelujah Hour. 8: beauty. 9: organ. 9:15: Savoy-Plaza Orch. (C.) 9:30: Chili Peppers. 9:45.
 KMTR—Stock market. 8: Breakfast Club. 8:05: economics. 9: organ. 9:15.
 KNX—Sharples' Breakfast Club: prayer. 8:45: Paquot Personalities. 9:45: Katherine Mayo (India.) 9:45.

10 a.m. to 12 Noon

KECA—News. 10: Edna Hopper (C.) 11:45.
 KFI—Woman's Magazine. 10: Standard School Broadcast (C.) at 11: news. 11:45.
 KFVB—Organ. 10: melodists. 10:30.
 KHJ—Raisin Day Parade (KMJ) (C.) 10:30.
 KMPC—Betty's hour. 11.
 KMTR—McIntyre's Hawaiian's. 10:30: City Hall. 11:45.
 KNX—Ten o'Clock Family. 10: Beauty talk. 11.

12 Noon to 2 p.m.

KECA—Concert (C.) 12: farm and home hour (C.) 12:15: The Lady Next Door (C.) 1: Hotel Sir Francis Drake Orch. 1:30.
 KFI—Agriculture talk. 12: Spanish. 12:30.
 KFVB—Organ. 12: Severi's Orchestra. 12:30: Joyce's Boys. 1.
 KHJ—Biltmore Orchestra. 12: world-wide news. 12:30: Osborne's Orch. (C.) 1: beauty talk. 1:15: Times' Forum. 1:30: Fred S. Hogue, editorial staff writer.
 KMPC—Happy Chappies. 12: news. 1:15: Bob. Bunny and Jr. 1:30.
 KMTR—News. 12: Hi-noon Hilltes. 12:15: Lumberjacks. 1:15.
 KNX—Ensemble. 12: Mother's Day talk. 12:45: reading. 1:30.
 KTM—Poetry. 1:30.

2 to 4 p.m.

KECA—N.B.C. Matinee (C.) 2: Frank Kneeland, baritone. 3: French. 3:15: news. 3:30.
 KFI—String orch. 2: Irish songs. 3: beauty talk. 3:15: Phil Cook (C.) 3:30: Bess Kilmer. 3:45.
 KFVB—San Francisco vs. Hollywood. 2:10.
 KHJ—Happy Go Lucky Hour (C.) 2: Feminine Fancies (C.) 3.
 KMTR—Cowboy Troubador. 2:15: Gelse's Orchestra. 2:30: Cowboy Troubador. 3:30.
 KMPC—Mexican hour. 2: soloist. 3.
 KNX—French. 2:30: Astro-Analyst. 3:35.
 KTM—Over the Teacup. 2.
 4 to 6 p.m.
 KECA—Sunshine Hour (C.) 4: (Eddie Peabody:) Birthday party (C.) 5: Maxwell Melodies (C.) 5:50.
 KFI—Three Co-eds. 4:15: Big Brother. 4:45: Air Castle. 5: "Adventures in Africa." 5:30.
 KFVB—Two-piano team. 4:30: Severi Orch. 5.
 KHJ—U.S.C. Trojan. 4: Walter Brown Murray. 4:15: organ. 5: numerologist (C.) 5:15: Don Ricardo. songs. 5:30: world-wide news. 5:50.
 KMPC—Kids Club. 4:30: news. 5.
 KMTR—Orchestra. 4:30: songs and piano duo. 5:15: news. 5:45.
 KNX—Travelogue. 4: Big Brother. 5: entertainment tips. 5:45.
 KTM—Zandro, astrologist. 4: Tell Me a Story Lady. 4:30.

6 to 7 p.m.

KECA—Stock market. 6: KECA Dance Band. 6:15: John Vale, tenor. 6:45.
 KFI—Lucky Strike Orch. (C.) 6.
 KFVB—Jackson's Entertainers. 6: Uncle Jerry. 6:30: Cecil and Sally. 6:45.
 KHJ—Lutheran Laymen's League (C.) 6: Prof. Lindsay. 6:30: Columbia Specialty (C.) 6:45. (Irene Beasley.)
 KMTR—"I Cudda Club." 6: Ethiopian Night Club. 6:30.
 KNX—Organ. 6: Tom and Wash. 6:15: heart throbs (songs.) Maurice Gunsky. 6:30: concert organist. 6:45.

7 to 8 p.m.

KECA—Amos 'n' Andy (C.) 7: Sperry Smiles (C.) 7:15: After-Dinner Review. 7:30.
 KFI—Packard Orch. 7: Standard Symphony. 7:30 (C.)
 KFVB—Piano duo. 7: popular songs. 7:15: Gramlich's "Tour of Songs." 7:30: Art's dance band. 7:45.
 KHJ—Denn's Orch. (C.) 7: Pryor's Band (C.) 7:15: Chocolate Soldiers (C.) 7:30.
 KMTR—Orchestra. 7: Headline Humor Man. 7:15: Vernon Rickard. songs. 7:30: sports interview. 7:45.
 KNX—Frank Watanabe and Hon. Archie. 7: Hall room boys. 7:15: Barbershop Quartet. 7:30: The Gossipers. 7:45.

8 to 9 p.m.

KECA—Musical Maids. 8:30.
 KFI—Demi-Tasse Revue (F.) 8:30.
 KFVB—Gicason and Armstrongs. comedy. 8: "Modernistic." 8:30.
 KHJ—Black and Blue. 8: Barron's News. 8:15: KHJ studio program. 8:30.
 KMTR—Campus Boys. 8: fishing news. 8:30: Dream Girl. 8:45.
 KTM—Saentella's concert. 8: soloists. 8:30.
 KNX—"Musical Models." 8: Arizona Wranglers. 8:30.

9 to 10 p.m.

KECA—Melody Makers' Ensemble. 9:30.
 KFI—"Beautiful Women of the Area." 9: concert. 9:30.
 KFVB—KFVB Orch. and soloists. 9: Elec. Transcription. 9:30: Slumber time. 9:45.
 KHJ—Dramatic Skit. 9: Don Lee Symphony. 9:30.
 KMPC—Organ. 9: Happy Chappies. 9:30.

an N.B.C. network (KECA at 7:15 a.m.) Chief Justice Hughes of the United States Supreme Court will be the principal speaker. George W. Wickersham, president of the National Committee on Law Observance and Enforcement, is to preside.

Then at 10:30 a.m. KHJ brings

from its station KMJ at Fresno, a link in the Dan Lee-Columbia radio chain, the parade of the Raisin Day festival. No program of the detailed high lights has been received, but a gala frolic is planned.

(From Programs Submitted by Stations)

(ALPHABETICALLY ARRANGED)

6 to 8 a.m.

KECA—Amer. Law Institute. Chas. Evans Hughes, speaker. 7:15 (C.)
 KFI—Stock market. 6:30: health exercises. 6:45: news. 7:30: Dorothy Raymond, piano. 7:45.
 KHJ—News. 7: organ. 7:30.
 KMPC—Latin-American program. 7.
 KMTR—Andy and Chester. 6: Breakfast Club. 7.
 KNX—Time and Sharples' Breakfast Club. 7.
 KTM—News. 7:30.

8 to 10 a.m.

KECA—Piano. 8: Wall-Street Flashes. 8:15: exercises. 8:30: Log of the Day (C.) 9: Spanish. 9:15: pianist. 9:30.
 KFI—Shell Happy Time. 8: Piano Twins. 9: Children's Clinic. 9:15: ballads. 9:30: organ. 9:45.
 KFVB—Severi's Orch. 9.
 KHJ—Hallelujah Hour. 8: beauty. 9: organ. 9:15: Savoy-Plaza Orch. (C.) 9:30: Chili Peppers. 9:45.
 KMTR—Stock market. 8: Breakfast Club. 8:05: economics. 9: organ. 9:15.
 KNX—Sharples' Breakfast Club: prayer. 8:45: Paquot Personalities. 9:45: Katherine Mayo (India.) 9:45.

10 a.m. to 12 Noon

KECA—News. 10: Edna Hopper (C.) 11:45.
 KFI—Woman's Magazine. 10: Standard School Broadcast (C.) at 11: news. 11:45.
 KFVB—Organ. 10: melodists. 10:30.
 KHJ—Raisin Day Parade (KMJ) (C.) 10:30.
 KMPC—Betty's hour. 11.
 KMTR—McIntyre's Hawaiian's. 10:30: City Hall. 11:45.
 KNX—Ten o'Clock Family. 10: Beauty talk. 11.

12 Noon to 2 p.m.

KECA—Concert (C.) 12: farm and home hour (C.) 12:15: The Lady Next Door (C.) 1: Hotel Sir Francis Drake Orch. 1:30.
 KFI—Agriculture talk. 12: Spanish. 12:30.
 KFVB—Organ. 12: Severi's Orchestra. 12:30: Joyce's Boys. 1.
 KHJ—Biltmore Orchestra. 12: world-wide news. 12:30: Osborne's Orch. (C.) 1: beauty talk. 1:15: Times' Forum. 1:30: Fred S. Hogue, editorial staff writer.
 KMPC—Happy Chappies. 12: news. 1:15: Bob. Bunny and Jr. 1:30.
 KMTR—News. 12: Hi-noon Hilltes. 12:15: Lumberjacks. 1:15.
 KNX—Ensemble. 12: Mother's Day talk. 12:45: reading. 1:30.
 KTM—Poetry. 1:30.

2 to 4 p.m.

KECA—N.B.C. Matinee (C.) 2: Frank Kneeland, baritone. 3: French. 3:15: news. 3:30.
 KFI—String orch. 2: Irish songs. 3: beauty talk. 3:15: Phil Cook (C.) 3:30: Bess Kilmer. 3:45.
 KFVB—San Francisco vs. Hollywood. 2:10.
 KHJ—Happy Go Lucky Hour (C.) 2: Feminine Fancies (C.) 3.
 KMTR—Cowboy Troubador. 2:15: Gelse's Orchestra. 2:30: Cowboy Troubador. 3:30.
 KMPC—Mexican hour. 2: soloist. 3.
 KNX—French. 2:30: Astro-Analyst. 3:35.
 KTM—Over the Teacup. 2.
 4 to 6 p.m.
 KECA—Sunshine Hour (C.) 4: (Eddie Peabody:) Birthday party (C.) 5: Maxwell Melodies (C.) 5:50.
 KFI—Three Co-eds. 4:15: Big Brother. 4:45: Air Castle. 5: "Adventures in Africa." 5:30.
 KFVB—Two-piano team. 4:30: Severi Orch. 5.
 KHJ—U.S.C. Trojan. 4: Walter Brown Murray. 4:15: organ. 5: numerologist (C.) 5:15: Don Ricardo. songs. 5:30: world-wide news. 5:50.
 KMPC—Kids Club. 4:30: news. 5.
 KMTR—Orchestra. 4:30: songs and piano duo. 5:15: news. 5:45.
 KNX—Travelogue. 4: Big Brother. 5: entertainment tips. 5:45.
 KTM—Zandro, astrologist. 4: Tell Me a Story Lady. 4:30.

6 to 7 p.m.

KECA—Stock market. 6: KECA Dance Band. 6:15: John Vale, tenor. 6:45.
 KFI—Lucky Strike Orch. (C.) 6.
 KFVB—Jackson's Entertainers. 6: Uncle Jerry. 6:30: Cecil and Sally. 6:45.
 KHJ—Lutheran Laymen's League (C.) 6: Prof. Lindsay. 6:30: Columbia Specialty (C.) 6:45. (Irene Beasley.)
 KMTR—"I Cudda Club." 6: Ethiopian Night Club. 6:30.
 KNX—Organ. 6: Tom and Wash. 6:15: heart throbs (songs.) Maurice Gunsky. 6:30: concert organist. 6:45.

7 to 8 p.m.

KECA—Amos 'n' Andy (C.) 7: Sperry Smiles (C.) 7:15: After-Dinner Review. 7:30.
 KFI—Packard Orch. 7: Standard Symphony. 7:30 (C.)
 KFVB—Piano duo. 7: popular songs. 7:15: Gramlich's "Tour of Songs." 7:30: Art's dance band. 7:45.
 KHJ—Denn's Orch. (C.) 7: Pryor's Band (C.) 7:15: Chocolate Soldiers (C.) 7:30.
 KMTR—Orchestra. 7: Headline Humor Man. 7:15: Vernon Rickard. songs. 7:30: sports interview. 7:45.
 KNX—Frank Watanabe and Hon. Archie. 7: Hall room boys. 7:15: Barbershop Quartet. 7:30: The Gossipers. 7:45.

8 to 9 p.m.

KECA—Musical Maids. 8:30.
 KFI—Demi-Tasse Revue (F.) 8:30.
 KFVB—Gicason and Armstrongs. comedy. 8: "Modernistic." 8:30.
 KHJ—Black and Blue. 8: Barron's News. 8:15: KHJ studio program. 8:30.
 KMTR—Campus Boys. 8: fishing news. 8:30: Dream Girl. 8:45.
 KTM—Saentella's concert. 8: soloists. 8:30.
 KNX—"Musical Models." 8: Arizona Wranglers. 8:30.

9 to 10 p.m.

KECA—Melody Makers' Ensemble. 9:30.
 KFI—"Beautiful Women of the Area." 9: concert. 9:30.
 KFVB—KFVB Orch. and soloists. 9: Elec. Transcription. 9:30: Slumber time. 9:45.
 KHJ—Dramatic Skit. 9: Don Lee Symphony. 9:30.
 KMPC—Organ. 9: Happy Chappies. 9:30.

KMTR—Wedding of the Air. 9: Dahl's Ship of Joy. 9:30.
 KNX—"Harrison Murder Case." play. 9: Luboviski violin recital. 9:30.
 KTM—Hamlet in Hollywood. 9: Ranch Boys. 9.

10 p.m. to Midnight

KECA—KECA String Orch. (Blanche Crossman, contralto.) 10: news. 10:30: exercises. 10:45.
 KFI—News. 10: Nomads (C.) 10:15: Letmatre, organist. 10:30: St. Francis Hotel orchestra at 11 (7.)
 KFVB—Gus Arnheim's Orchestra. 10-12.
 KHJ—Times' world-wide news at 10: Earl Burnett's dance orchestra. 10:05.
 KMPC—Hill Billies. 10-11.
 KMTR—Abe Lyman's dance orchestra. 10: Gelse's Happy Guys. 10:30.
 KNX—Arizona Wranglers. 10: dance music. 10:30: Paris Inn frolic. 11.
 KTM—Orkan. 10:30: varieties. 11-1.

Midnight to 1 a.m.

KHJ—Phantom of the organ. 12-1.
 KMTR—Happiness Girl. songs. 12-1.
 KMPC—Harmony Boys. 12.