

TODAY'S RADIO PROGRAMS

[Central Daylight Saving Time]

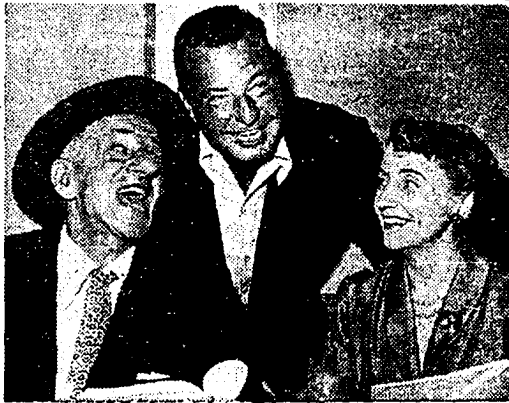
- 6 A. M. TO 12 NOON
- 8:00—W-G-N—Farm hour
WBBM—Paul Gibson
WMAQ—Norman Ross
WLS—Farm Bulletin
WCFL—Dawnbusters
WJJD—Early Risers
WIND—News; music
- 8:15—WLS—Skeeter Bond
- 8:25—WMAQ—News
- 8:30—W-G-N—Farm hour
WBBM—News; P. Gibson
WMAQ—Norman Ross
WLS—Farm story; music
WCFL—News; Dawnbusters
- 8:45—W-G-N—Macfarlane, news
WLS—News
- 6:55—WBBM—News
WMAQ—News
- 7:00—W-G-N—Bill Evans
WBBM—News Roundup
WIND—News; records
WLS—Rocky Porter
WCFL—Dawnbusters
WMAQ—Norman Ross
WJJD—News
- 7:15—WBBM—News
WLS—Bob Ather
WJJD—Jim Ameche
- 7:30—WIND—News; music
WBBM—John Harrington
WCFL—News; Dawnbusters
WLS—The Rangers
- 7:45—WLS—News
- 7:55—WMAQ—News
- 8:00—W-G-N—R. Hurlleigh, news
WCFL—News; music
WBBM—News
WMAQ—Ross Again
WLS—Barn Dance Prevw.
WIND—News; Top Tunes
WJJD—Jim Ameche
- 8:15—W-G-N—Flowers
WBBM—John Harrington
WMAQ—Tunes and Tips
- 8:30—W-G-N—Week-end Reporter
WMAQ—Norman Ross
WCFL—News; M. Hogan
- 8:45—WMAQ—Carnival of Books
- 9:00—W-G-N—L. Nichols, news
WIND—News; music
WMAQ—Ned's Squadron
WBBM—John Harrington
WLS—August Richards
WCFL—Top Tunes
- 9:15—W-G-N—Flowers
WCFL—Marty Hogan
WLS—News
- 9:30—W-G-N—Spots of Music
WMAQ—Mary Lee Taylor
WBBM—Tops in Pops
WIND—News; Bing
WLS—Space Patrol
WCFL—News; Tunes
WJJD—News; Tunes
- 9:40—WBBM—Galen Drake
- 9:45—W-G-N—Marshall Kent
WBBM—Children's Corner
- 10:00—W-G-N—Virginia Gale
WBBM—Let's Pretend
WIND—News; Sports
WLS—Miss Evelyn
WMAQ—Secret Story
WCFL—Marty Hogan
WJJD—Obit Column



Constance Bennett will be heard on the Playhouse on Broadway at 7:30 p. m. tomorrow over WBBM.

SPECIAL RADIO EVENTS

- 1:25 p. m. WIND—Baseball. Cubs vs. Cards.
2:00—WFJL—Football. Lewis College vs. De Kalb.
2:25—WBBM—Football. Georgia Tech vs. Citadel.
3:15—WCFL—Football. Cards vs. Dallas Texans.
5:55—WCFL—Baseball. Sox vs. Browns.



Jimmy Durante and Margaret Truman will team up for WNBQ's All Star Revue at 7 p. m. today. Their guest will be Phil Harris.

- 10:15—W-G-N—Today's the Day
WIND—Record Shop
WJJD—Record File
WLS—News
- 10:25—W-G-N—H. Engle, news
- 10:30—W-G-N—Playtime Platters
WBBM—Give and Take
WMAQ—Love Story
WLS—Martha Crane
WCFL—News; music
WIND—News; records
WJJD—News; records
- 10:45—W-G-N—Playtime Platters
WCFL—Bob Elson
- 11:00—W-G-N—News
WBBM—Theater of Today
WLS—Pruth McFarlin
WMAQ—Elizabeth Hart
WIND—News; Martin
WCFL—Marty Hogan
- 11:15—W-G-N—Novelty Shop
WLS—Prairie Farmer
- 11:30—W-G-N—Farm News Conference
WBBM—Hollywood Stars
WMAQ—Illelry Records
WLS—American Farmer
WJJD—Pop Tunes
- 11:45—WMAQ—Backyd. Gardener
12 NOON TO 6 P. M.
- 12:00—W-G-N—Man on the Farm
WMAQ—Farm and Home
WLS—News report
WIND—News; Hits
WCFL—Variety Time
WBBM—Grand Central
WJJD—Waltz Time
- 12:15—WJJD—Bill O'Connor
WLS—Dr. LeGear
- 12:30—W-G-N—Reynolds Records
WLS—Eddy Arnold
WMAQ—Farming Business
WIND—News; music
WBBM—City Hospital
WCFL—Marty Hogan
WJJD—News; B. O'Connor
- 12:45—WMAQ—News
WIND—Baseball Dugout
- 1:00—W-G-N—News
WMAQ—Rio Rhythm
WCFL—Sports Page
WBBM—Hornet Girls
1:10—WCFL—Baseball Dugout
1:15—W-G-N—Record Relay
WLS—Farming Business
WIND—Dugout Interview
1:20—WLS—Market Review
1:25—W-G-N—F. Singler, news
WIND—Cubs vs. Cards
- 1:30—W-G-N—Record Relay
WMAQ—Big City Serenade
WBBM—Paul Gibson
WJJD—Record Player
WLS—Farmer and Market

- 1:45—WLS—Guest Stars
WJJD—Record Review
- 2:00—W-G-N—Record Relay
WMAQ—House of Music
WLS—Merry Go Round
WFJL—DeKalb vs. Lewis College
WOPA—Oak Park vs. Highland Park
- 2:25—W-G-N—F. Sinkler, news
WBBM—Ga. Tech vs. Citadel
- 2:30—W-G-N—Record Relay
- 3:00—W-G-N—Record Relay
WNMP—Merry Wives of Windsor
WJJD—Juke Box
WJJD—Scoreboard
- 3:15—WCFL—Cards vs. Dallas Texans
- 3:30—W-G-N—Record Relay
WIND—Scoreboard
- 4:00—W-G-N—News
WIND—News; music
WJJD—Rosemary Wayne
WOPA—Hinsdale vs. Rockford
- 4:15—W-G-N—Melody Parade
4:30—W-G-N—Collector's Corner
4:45—WJJD—Bill O'Connor
WMAQ—Theater Guild Highlights
- 5:00—W-G-N—Collector's Corner
WMAQ—News
WIND—News; music
WBBM—Football Review
- 5:15—WMAQ—Symp. Scrapbook
WBBM—Civil Defense
WJJD—Record Roundup
WIND—Glenn Miller
- 5:30—W-G-N—Jack Brickhouse
WMAQ—Summer Symphony
WBBM—Sports Roundup
WJJD—News; music
- 5:45—

WJJD—"KNOW YOUR ILLINOIS" series. Dr. M. M. Leighton of the State Geological Survey will discuss the vast treasures buried under the plains of Illinois.

- W-G-N—Seng Shop
WCFL—Marty Hogan
WBBM—News
WLS—Around Radio
WIND—Linn Burton
- 5:55—W-G-N—Baukhacc, news
WCFL—Sox vs. Browns
6 P. M. TO MIDNIGHT
- 6:00—W-G-N—News
WLS—News
WBBM—This I Believe
WJJD—Music
WIND—News; music
6:05—WBBM—Sat. at Chase

6:15—

W-G-N—REPORT FROM WASHINGTON

ROBERT YOUNG



Correspondent of the Chicago Tribune a news staff at the nation's capital with an analysis of important news developments of greatest interest tonight.

Sponsored by The TRIBUNE.

- WLS—Hymn Time
- 8:30—W-G-N—Down You Go
WBBM—Gunsmoke
WJJD—Supportive Frolics
WIND—Sports Review
WLS—Barn Dance
- 8:55—W-G-N—C. Brown, news
- 7:00—W-G-N—Twenty Questions
WBBM—Gene Autry
WMAQ—Janie Ac
WLS—Hayloft Hit Parade
WIND—News; music
- 7:30—W-G-N—Unshackled
WBBM—Tarzan
WMAQ—Khaki 'n' Blue
WLS—Hayloft Frolics
WIND—Club News
- 8:00—W-G-N—Record Rendezvous
WMAQ—Pee-wee King
WBBM—Gambusters
WLS—Barn Dance
WIND—News; music
- 8:15—W-G-N—Music Shop
- 8:25—WBBM—Win Elliott
- 8:30—W-G-N—Lombardoland USA
WMAQ—Grand Ole Opry
WBBM—Broadway, My Beat
W-G-N—Theater of Air
WMAQ—Reuben, Reuben
WBBM—Robt. Q. Lewis
- 9:30—WBBM—Chicagoans
WLS—The Buccaneers
WMAQ—Surprise Serenade
- 9:45—WLS—News
- 10:00—W-G-N—Music for You
WLS—Barn Dance
WMAQ—News
WIND—News; E. Hubbard
WBBM—News
- 10:15—WBBM—Dance orchestra
WMAQ—Dance Records
- 10:30—W-G-N—News
- 10:40—W-G-N—Song Souvenir
- 10:45—W-G-N—Wayne Muir
WCFL—Scoreboard
- 11:00—W-G-N—Jan Garber
WIND—News; G. Lombardo
WMAQ—News
WBBM—News
- 11:15—WBBM—Dance orchestra
- 11:30—W-G-N—Wayne Muir
WIND—News; melodies
WCFL—News; music
WBBM—Dance orchestra
- 11:55—W-G-N—News
MIDNIGHT AND AFTER
- 12:00—W-G-N—Chgo. at Midnight
WBBM—Midnight Matinee
WCFL—Owl Show
- 12:30—W-G-N—Chgo. at Midnight
- 1:00—W-G-N—News



Jackie Gleason begins his television series at 7 p. m. today over WBBM.